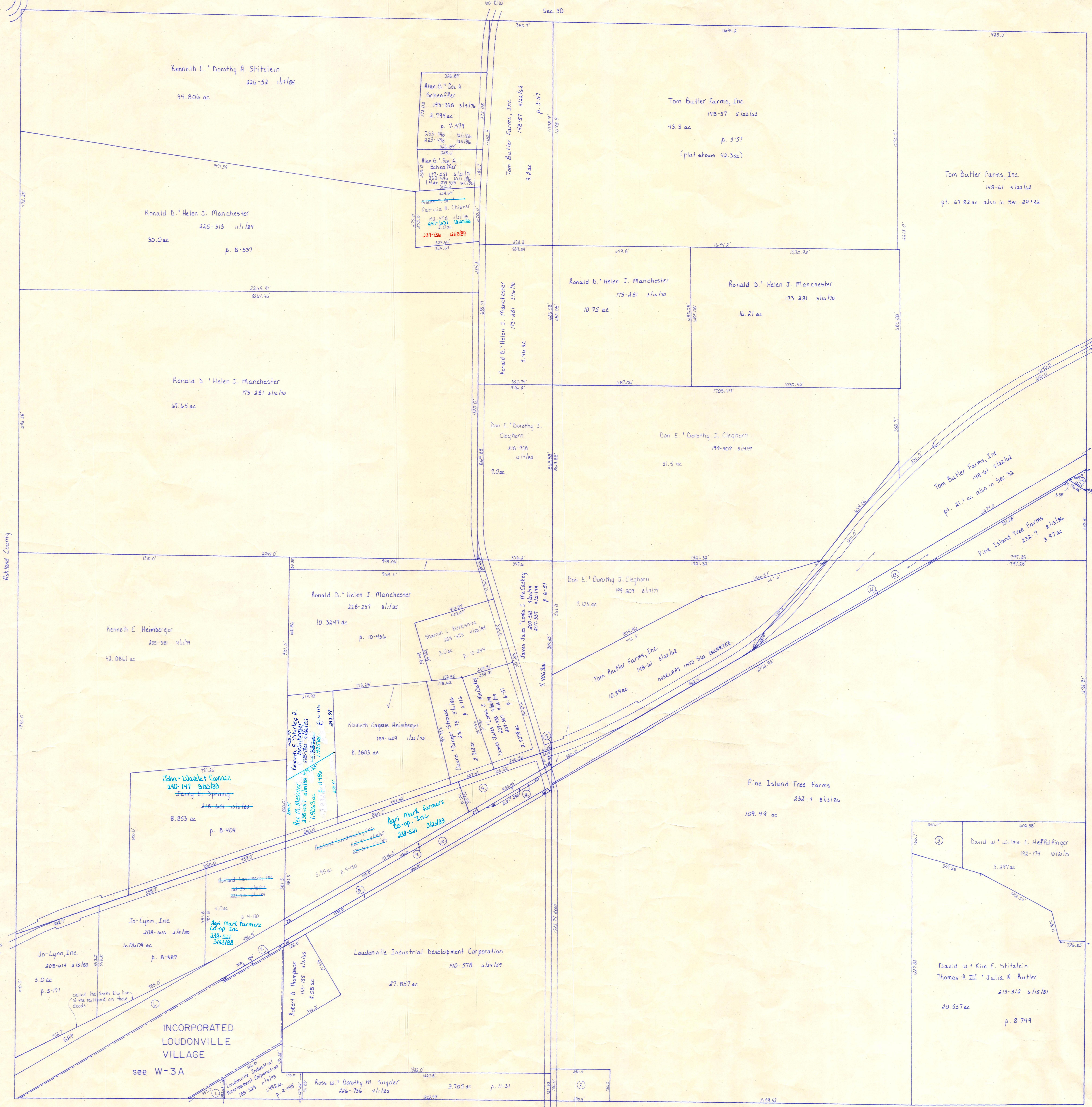


T.H. 455  
Old T.H. 5  
60' x 100'

T.H. 457  
Old T.H. 5  
60' x 100'

Sec. 30



- ① Loudonville Industrial Development Corporation 216-715 4/1/82 190ac p. 8-495
- ② **John M. Butler 244-453 3/12/87**  
Consolidated Rail Corporation 205-456 4/24/78 1.0 ac
- ③ David W. Wilma E. Hefelfinger 192-174 10/1/75 1.156 ac
- ④ James Jules Loma J. McCaskey 207-333 4/20/79, 207-337 4/20/79 1.1275 ac p. 6-51
- ⑤ Britton D. II. Nancy F. Young 192-57 10/1/75 .0824 ac p. 7-519
- ⑥ Railroad see card
- ⑦ Consolidated Rail Corporation 205-456 4/24/78 .12 ac
- ⑧ Consolidated Rail Corporation 205-456 4/24/78 .88 ac
- ⑨ Consolidated Rail Corporation 205-456 4/24/78 .62 ac
- ⑩ Consolidated Rail Corporation 205-456 4/24/78
- ⑪ Consolidated Rail Corporation 205-456 4/24/78 .064 ac
- ⑫ Railroad see card

T-20, R-15, Sec. 31  
WASHINGTON TWP.  
SCALE: 1" = 200'

**PRINTED**  
1-12-87

LET IT BE KNOWN, THIS MAP HAS BEEN PREPARED AS A REFERENCE GUIDE TO PROPERTY OWNERSHIP AND CURRENT, HOWEVER, IT IS NOT INTENDED FOR ANY LEGAL USE, WHETHER IT BE IN SALES, TRANSFERS, TRADES, LEASES OF ANY TYPE, ETC., AND DO NOT ACCEPT RESPONSIBILITY FOR ERRORS OF ANY NATURE OR OMISSIONS CONTAINED HEREIN.

W-4