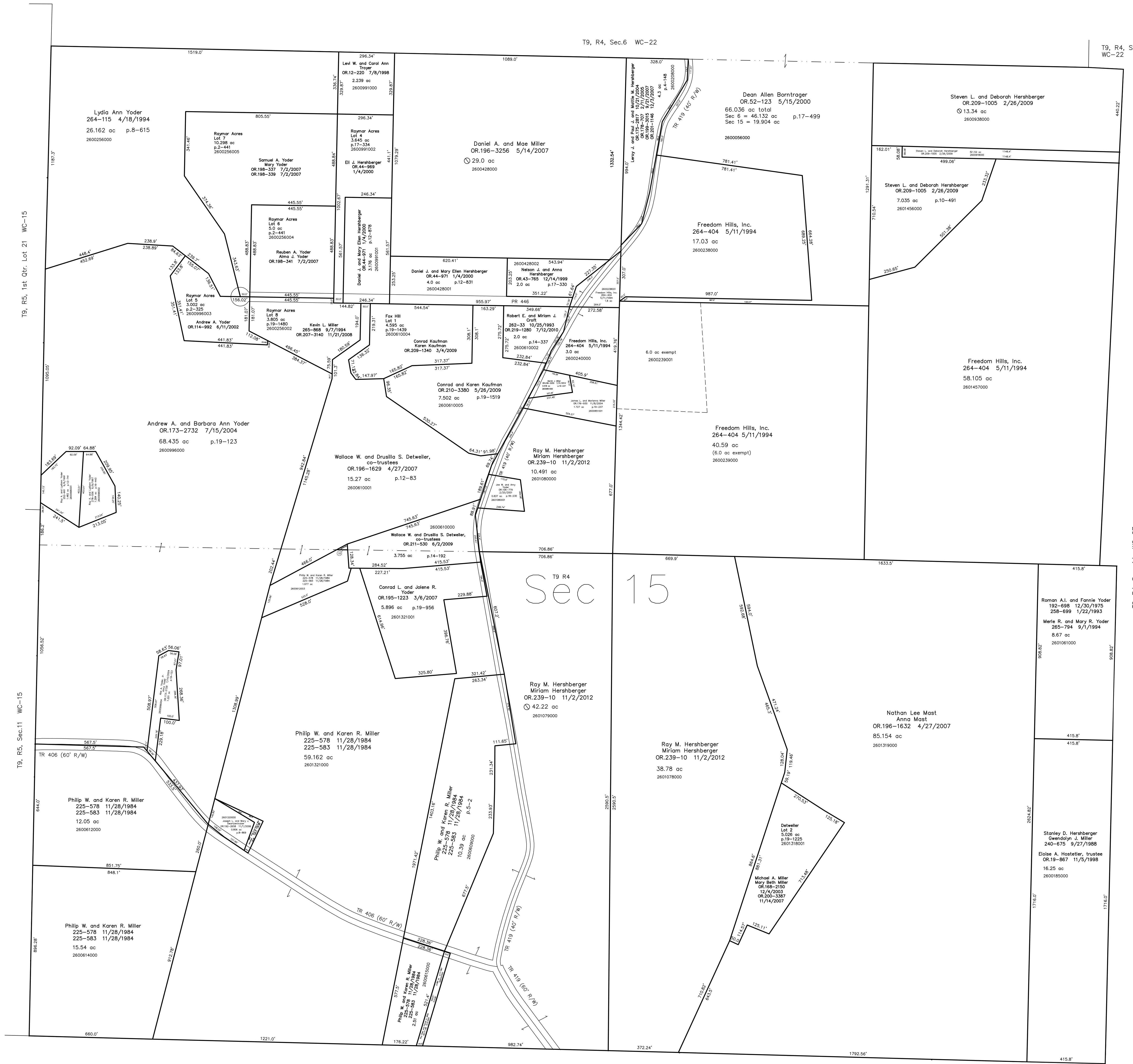


2600612002 ① Philip W. Miller and Karen R. Miller  
225-578 11/28/1984  
225-583 11/28/1984  
0.148 ac

T9, R4, Sec.6 WC-22

T9, R4, Sec.7  
WC-22



T9, R5, 1st. Qtr. Lot 21 WC-15

T9, R5, Sec.11 WC-15

T9, R4, Sec. 14 WC-27

Detweiler Subdivision Replat of Lot 1 & Additional Lands  
Plat 19-1225 Platted 1/8/2008

Fox Hill Subdivision  
Plat 19-1439 Platted 12/24/2008

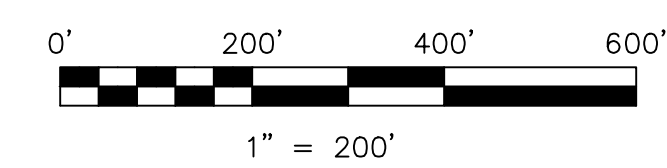
Raymor Acres Allotment No.1- Second Addition  
Plat 17-334 Platted 12/17/1999

Raymor Acres Allotment No.1- Third Addition  
Plat 2-325 Platted 1/5/2001

Raymor Acres Allotment No.1 Replat of Lots 2 & 3  
Plat 2-441 Platted 1/26/2007

Raymor Acres Allotment No.1 Replat of Lot 1 & Additional Lands  
Plat 19-1480 Platted 3/19/2009

T9, R4, Sec.16 WC-20



LET IT BE KNOWN, THIS MAP HAS BEEN PREPARED AS A REFERENCE GUIDE TO PROPERTY OWNERSHIP. WE BELIEVE THIS INFORMATION TO BE CORRECT AND CURRENT. HOWEVER IT IS NOT INTENDED FOR ANY LEGAL USE, WHETHER IT BE IN SALES, TRANSFERS, TRADES, LEASES OF ANY TYPE, ETC., AND DO NOT ACCEPT RESPONSIBILITY FOR ERRORS OF ANY NATURE OR OMISSIONS CONTAINED HEREIN.

⊗ new survey required for next transfer

Last Revision: 11/2/2012  
**T-9, R-4, Sec.15**  
**Walnut Creek Twp.**  
**Holmes County, Ohio**

# WC-21

