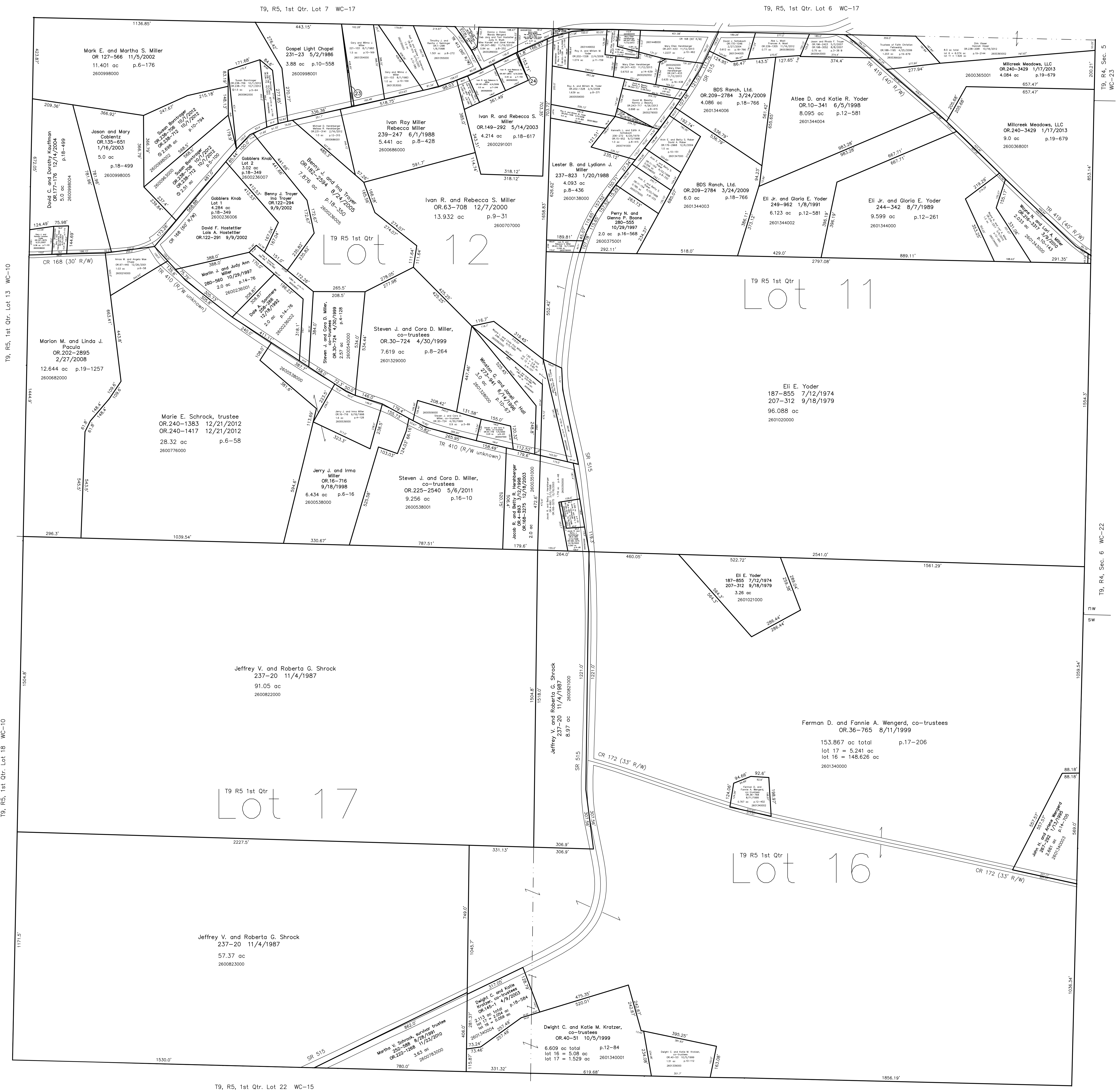
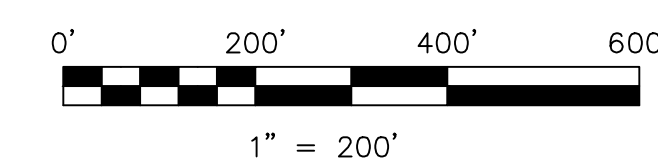


2600988003 23 Gary Miller and Wilma J. Miller
258-609 1/13/1993
0.063 ac p.14-132

2600291000 24 Ivan R. Miller and Rebecca S. Miller
OR 187-2810 4/4/2006
0.007 ac p.7-700



Gobblers Knob Subdivision
Plat 18-349 Platted 8/9/2002



LET IT BE KNOWN, THIS MAP HAS BEEN PREPARED AS A REFERENCE GUIDE TO PROPERTY OWNERSHIP. WE BELIEVE THIS INFORMATION TO BE CORRECT AND CURRENT, HOWEVER IT IS NOT INTENDED FOR ANY LEGAL USE, WHETHER IT BE IN SALES, TRANSFERS, TRADES, LEASES OF ANY TYPE, ETC., AND DO NOT ACCEPT RESPONSIBILITY FOR ERRORS OF ANY NATURE OR OMISSIONS CONTAINED HEREIN.

new survey required
for next transfer

Last Revision: 11/19/2013

**T-9, R-5, 1st. Qtr.
Lots 11,12,16,17
Walnut Creek Twp.
Holmes County, Ohio**

WC-16