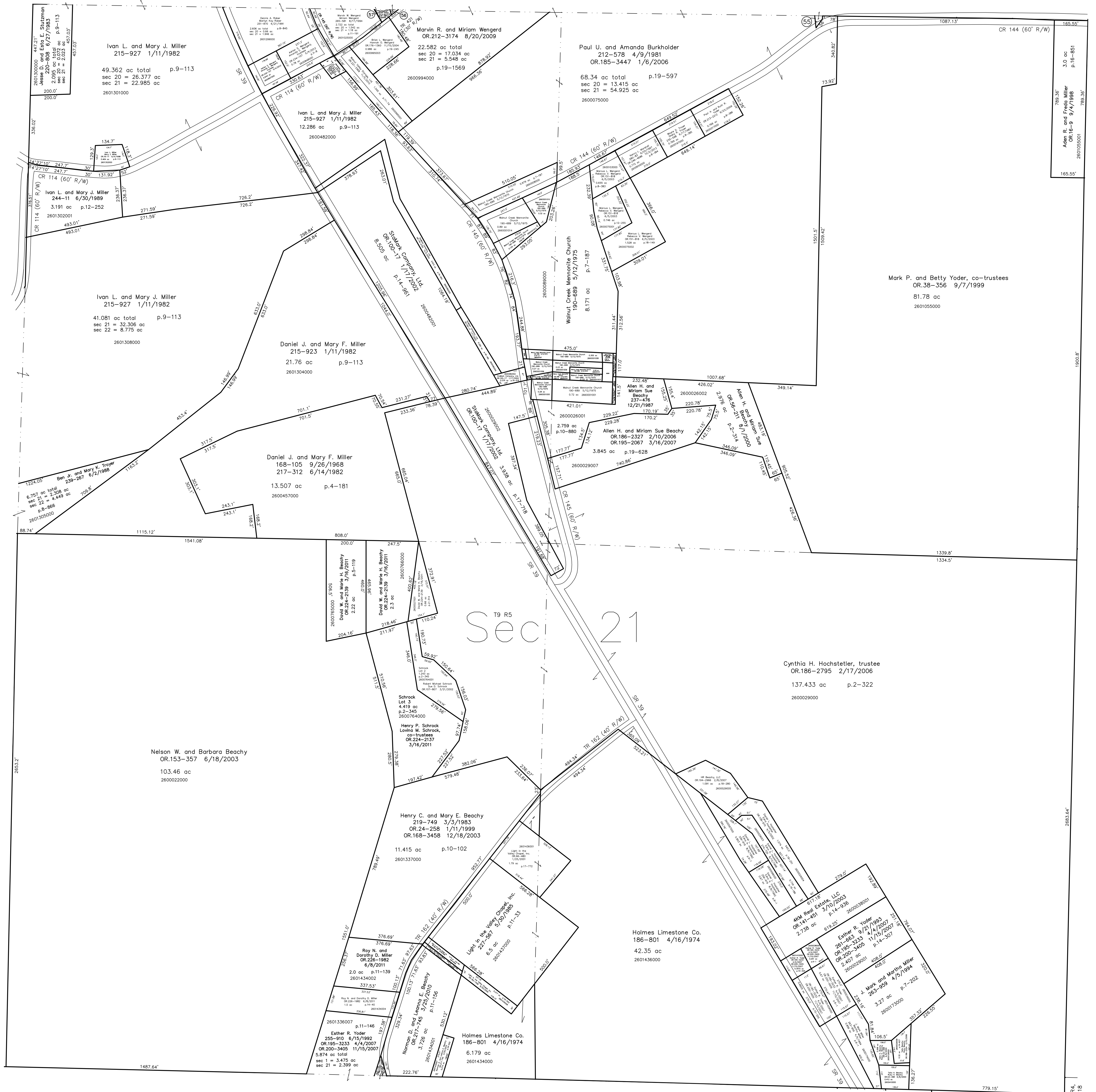


- 2601054002 (55) Carlisle Holdings, LLC
CR 187-2553 6/14/2007
0.032 ac p.19-987
- 2600994001 (56) Marcus L. Wengard and Rebecca V. Wengard
CR 158-1076 1/7/2004
0.011 ac p.16-345
- 2600900001 (57) Marvin W. Wengard and Miriam Wengard
265-581 8/17/1994
0.002 ac p.11-191

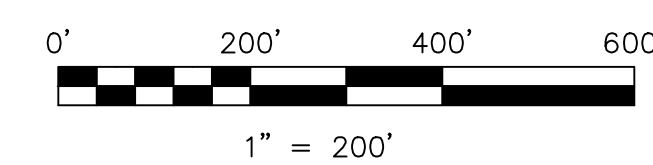
T9, R5, Sec. 22 WC-07



T9, R4, Sec. 25 WC-19

Schrock Subdivision Replat of Lot 1
Plot 2-345 Platted 3/6/2002

T8, R5, Sec. 1 WC-12



LET IT BE KNOWN, THIS MAP HAS BEEN PREPARED AS A REFERENCE GUIDE TO PROPERTY OWNERSHIP. WE BELIEVE THIS INFORMATION TO BE CORRECT AND CURRENT. HOWEVER, IT IS NOT INTENDED FOR ANY LEGAL USE, WHETHER IT BE IN SALES, TRANSFERS, TRADES, LEASES OF ANY TYPE, ETC., AND DO NOT ACCEPT RESPONSIBILITY FOR ERRORS OF ANY NATURE OR OMISSIONS CONTAINED HEREIN.

new survey required
for next transfer

Last Revision: 10/2/2013

T-9, R-5, Sec.21
Walnut Creek Twp.
Holmes County, Ohio

WC-13

T8, R4, Sec. 5 WC-16