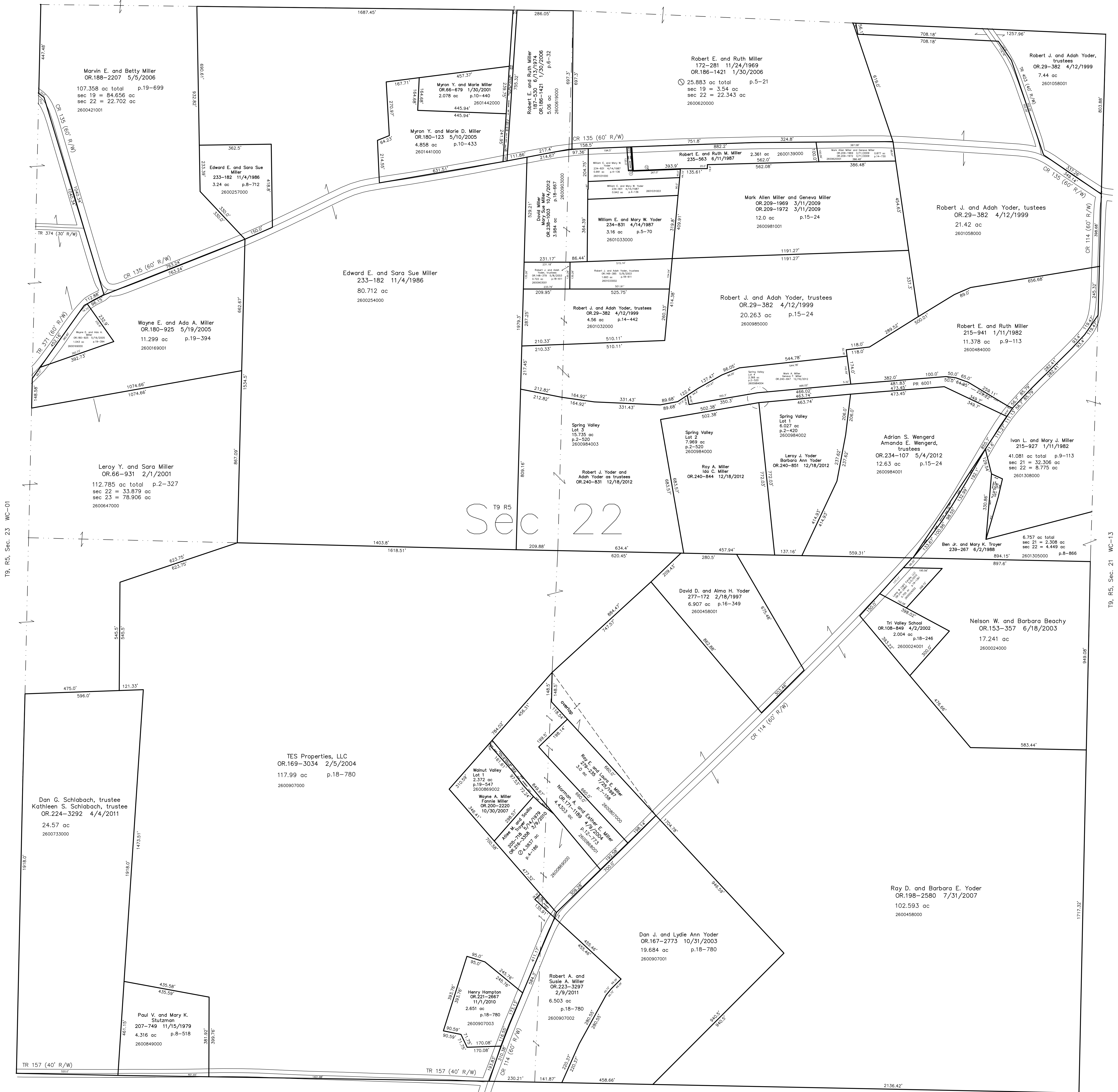


- 2601034000 ⑩ William E. Yoder and Mary W. Yoder  
234-831 4/14/1987  
0.055 ac p.8-691
- 2600139001 ⑪ William E. Yoder and Mary W. Yoder  
262-902 12/30/1993  
0.014 ac p.14-401
- 2601031002 ⑫ Robert E. Miller and Ruth Miller  
282-904 12/30/1993  
0.014 ac p.14-401
- 2600908001 ⑬ Ailee M. Troyer and Savilla Troyer  
239-691 7/12/1988  
0.0898 ac p.12-32
- 2601511000 ⑭ Adrian S. Wengerd and Amanda E. Wengerd, trustees  
OR.234-107 5/4/2012  
0.172 ac p.18-192



T9, R5, Sec. 23 WC-01

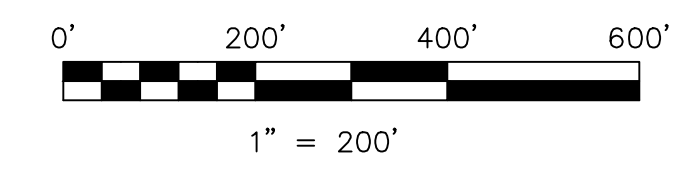
T9, R5, Sec. 21 WC-13

Clark Township T8, R5, Sec. 2 C-20

- Miller Road Subdivision  
Plat 2-468 Platted 11/12/2008
- Spring Valley Subdivision  
Plat 2-420 Platted 1/9/2006
- Spring Valley Subdivision First Addition  
Plat 2-520 Platted 12/4/2012
- Walnut Valley Subdivision  
Plat 19-547 Platted 11/17/2005

Last Revision: 12/18/2012

**T-9, R-5, Sec.22  
Walnut Creek Twp.  
Holmes County, Ohio**



LET IT BE KNOWN, THIS MAP HAS BEEN PREPARED AS A REFERENCE GUIDE TO PROPERTY OWNERSHIP. WE BELIEVE THIS INFORMATION TO BE CORRECT AND CURRENT. HOWEVER, IT IS NOT INTENDED FOR ANY LEGAL USE, WHETHER IT BE IN SALES, TRANSFERS, TRADES, LEASES OF ANY TYPE, ETC., AND DO NOT ACCEPT RESPONSIBILITY FOR ERRORS OF ANY NATURE OR OMISSIONS CONTAINED HEREIN.

new survey required  
for next transfer

# WC-07