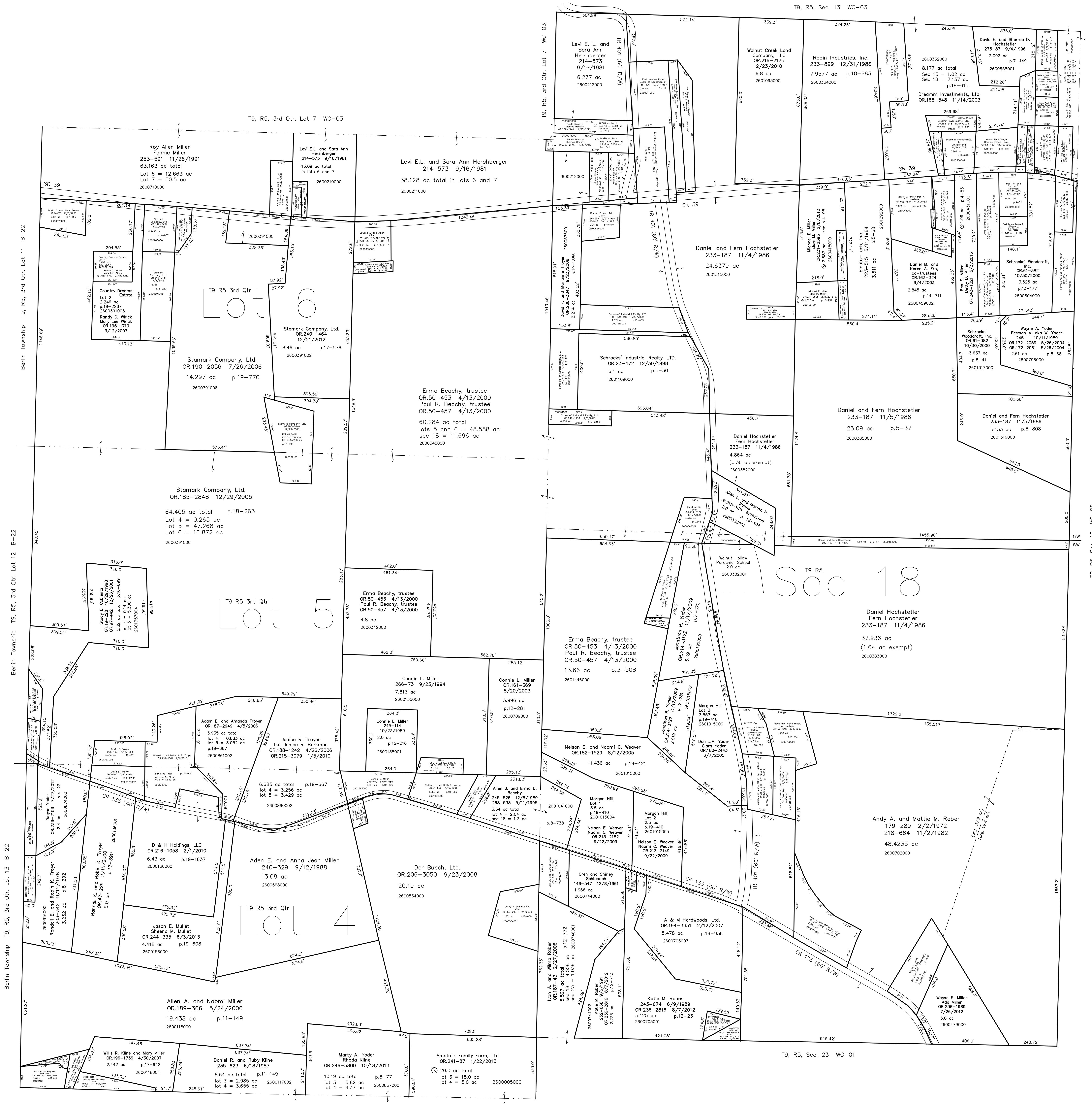


- 2601357000 ① Wayne Yoder
OR.236-2106 7/27/2012
0.049 ac p.18-263
- 2600804003 ② Hosea Paul Troyer and Bernice Renee Troyer
258-213 12/16/1992
0.025 ac p.13-177
- 2600460002 ③ Daniel M. Erb and Karen A. Erb, trustees
OR.200-3068 11/9/2007
0.049 ac p.14-711



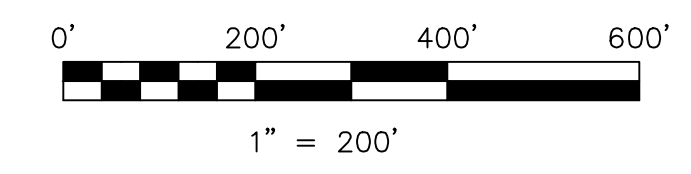
Country Dreams Estate Subdivision
Plat 19-2267 Platted 6/3/2013

Morgan Hill Subdivision
Plat 19-410 Platted 5/31/2005

T9, R5, 3rd Qtr. Lot 3 WC-01

Last Revision: 12/5/2013

T-9, R-5, Sec.18
3rd.Qtr. Lots 4,5,6
Walnut Creek Twp.
Holmes County, Ohio



LET IT BE KNOWN, THIS MAP HAS BEEN PREPARED AS A REFERENCE GUIDE TO PROPERTY OWNERSHIP. WE BELIEVE THIS INFORMATION TO BE CORRECT AND CURRENT. HOWEVER, IT IS NOT INTENDED FOR ANY LEGAL USE, WHETHER IT BE IN SALES, TRANSFERS, TRADES, LEASES OF ANY TYPE, ETC., AND DO NOT ACCEPT RESPONSIBILITY FOR ERRORS OF ANY NATURE OR OMISSIONS CONTAINED HEREIN.

① new survey required for next transfer

WC-02