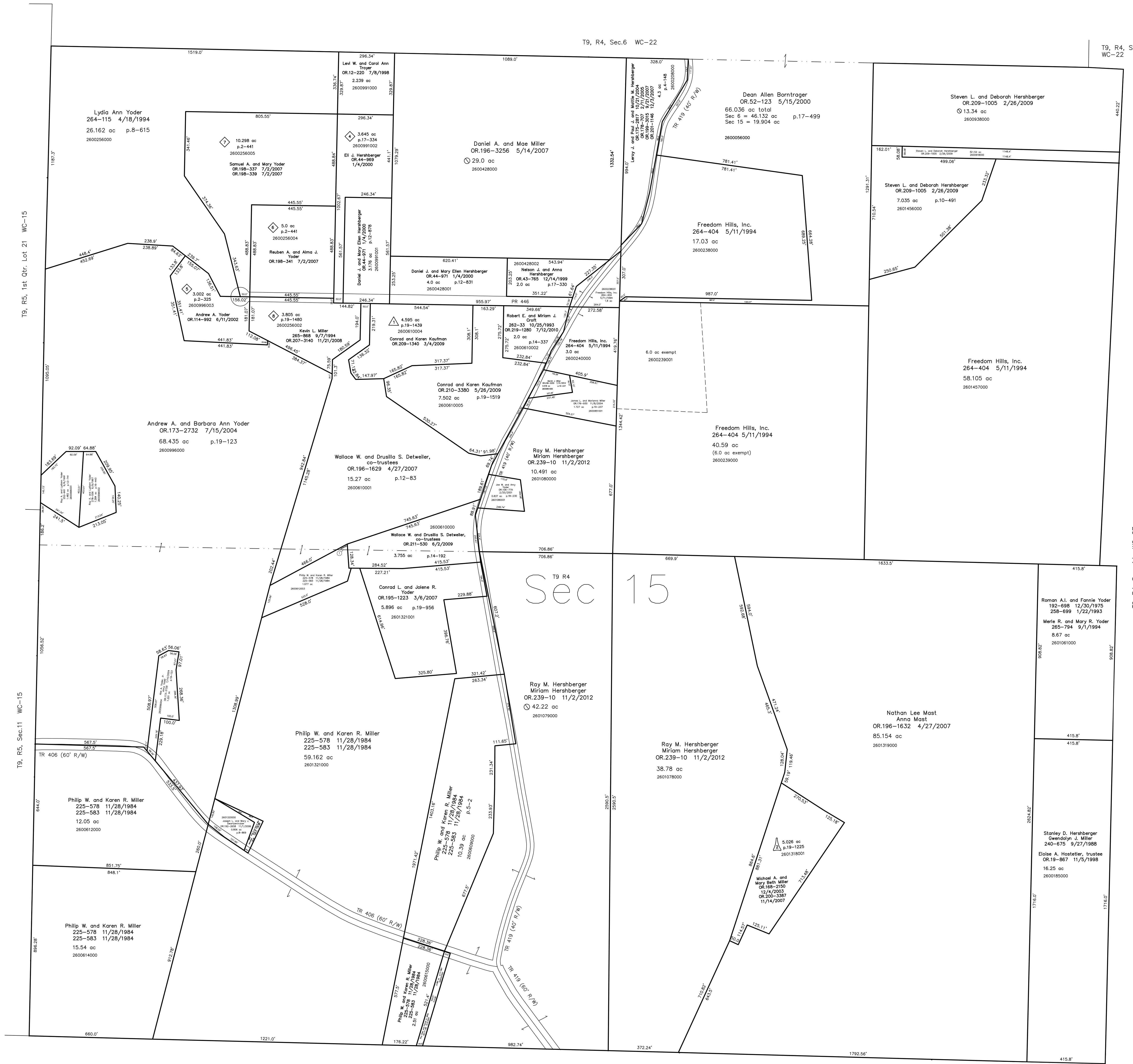


2600612002 Philip W. and Karen R. Miller
225-578 11/28/1984
225-583 11/28/1984
0.148 ac

T9, R4, Sec.6 WC-22

T9, R4, Sec.7
WC-22



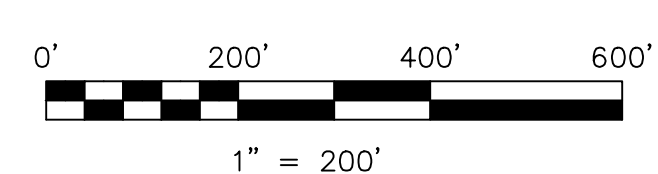
T9, R5, 1st. Qtr. Lot 21 WC-15

T9, R5, Sec.11 WC-15

T9, R4, Sec. 14 WC-27

T9, R4, Sec.16 WC-20

- △ Detweiler Subdivision Replat of Lot 1 & Additional Lands
Plat 19-1225 Platted 1/8/2008
- △ Fox Hill Subdivision
Plat 19-1439 Platted 12/24/2008
- ◇ Raymor Acres Allotment No.1- Second Addition
Plat 17-334 Platted 12/17/1999
- ◇ Raymor Acres Allotment No.1- Third Addition
Plat 2-325 Platted 1/5/2001
- ◇ Raymor Acres Allotment No.1 Replat of Lots 2 & 3
Plat 2-441 Platted 1/26/2007
- ◇ Raymor Acres Allotment No.1 Replat of Lot 1 & Additional Lands
Plat 19-1480 Platted 3/19/2009



LET IT BE KNOWN, THIS MAP HAS BEEN PREPARED AS A REFERENCE GUIDE TO PROPERTY OWNERSHIP. WE BELIEVE THIS INFORMATION TO BE CORRECT AND CURRENT. HOWEVER IT IS NOT INTENDED FOR ANY LEGAL USE, WHETHER IT BE IN SALES, TRANSFERS, TRUSTS, LEASES OF ANY TYPE, ETC., AND DO NOT ACCEPT RESPONSIBILITY FOR ERRORS OF ANY NATURE OR OMISSIONS CONTAINED HEREIN.

⊙ new survey required for next transfer

Last Revision: 11/2/2012
T-9, R-4, Sec.15
Walnut Creek Twp.
Holmes County, Ohio

WC-21

