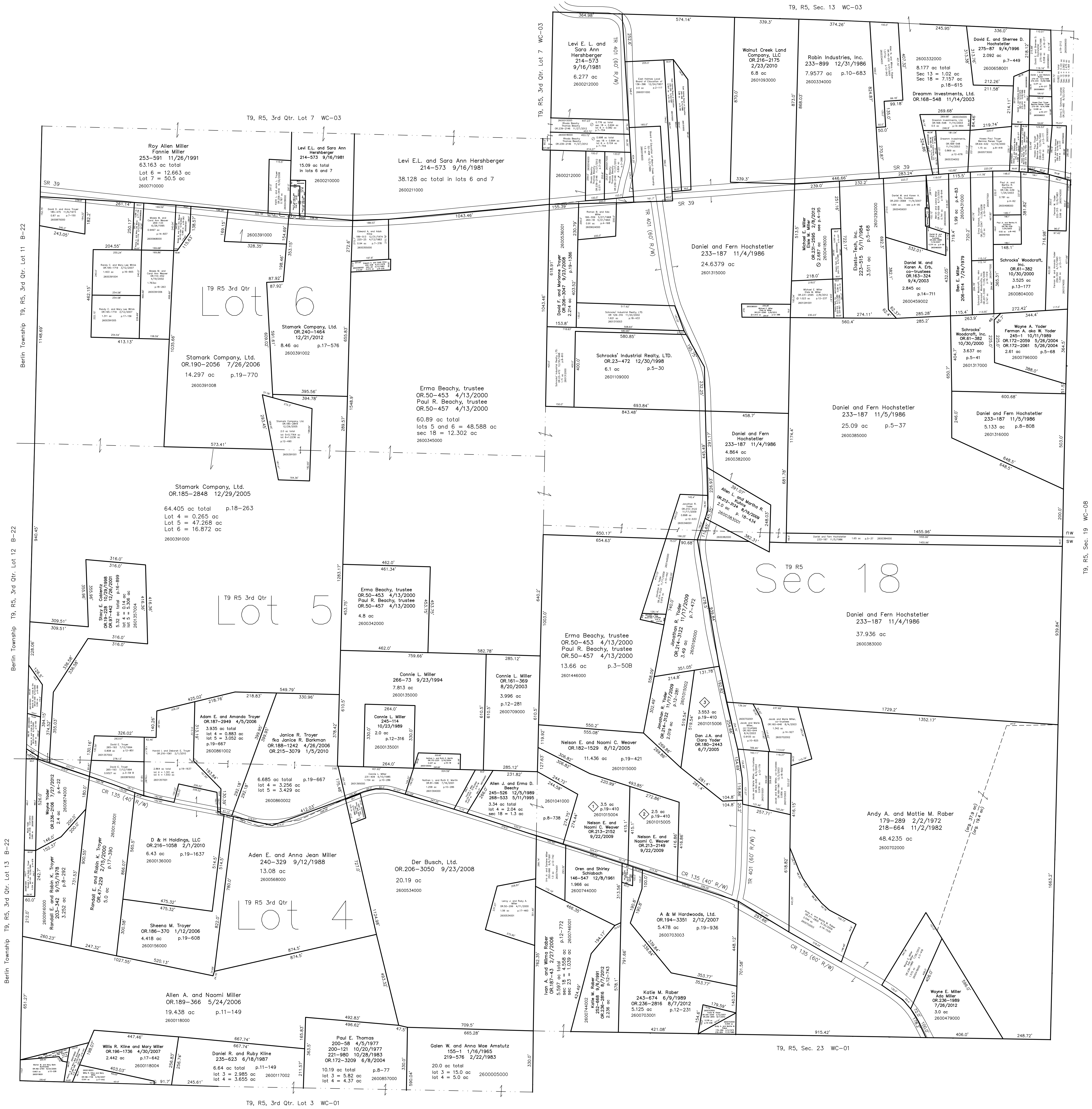
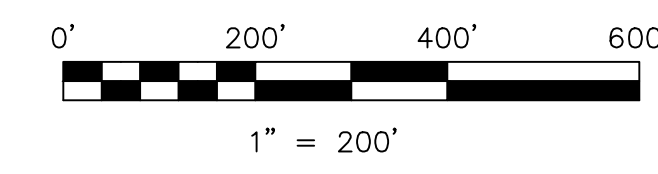


- 2601357000 ① Wayne Yoder
OR.236-2106 7/27/2012
0.049 ac p.18-263
- 2600804003 ② Hosea Paul Troyer and Bernice Renee Troyer
258-213 12/16/1992
0.025 ac p.13-177
- 2600460002 ③ Daniel M. and Koren A. Erb, trustees
OR.200-3068 11/9/2007
0.049 ac p.14-711



◇ Morgan Hill Subdivision
Plat 19-410 Platted 5/31/2005



LET IT BE KNOWN, THIS MAP HAS BEEN PREPARED AS A REFERENCE GUIDE TO PROPERTY OWNERSHIP. WE BELIEVE THIS INFORMATION TO BE CORRECT AND CURRENT. HOWEVER, IT IS NOT INTENDED FOR ANY LEGAL USE, WHETHER IT BE IN SALES, TRANSFERS, TRADES, LEASES OF ANY TYPE, ETC., AND DO NOT ACCEPT RESPONSIBILITY FOR ERRORS OF ANY NATURE OR OMISSIONS CONTAINED HEREIN.

○ new survey required for next transfer

Last Revision: 12/21/2012

T-9, R-5, Sec.18
3rd.Qtr. Lots 4,5,6
Walnut Creek Twp.
Holmes County, Ohio

WC-02