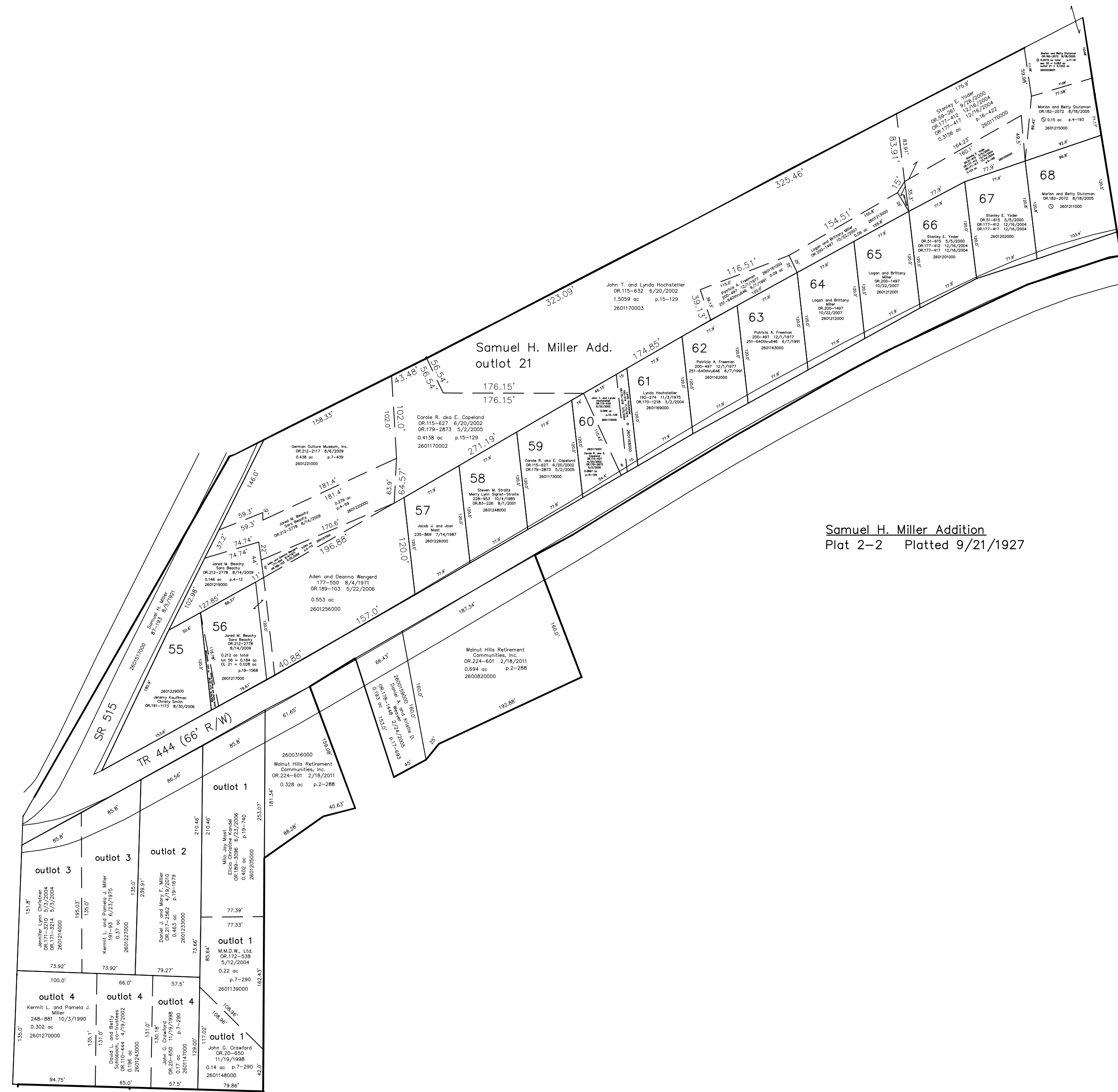
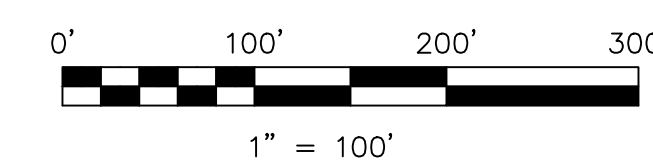


match line — see WC-14A for west part of Walnut Creek Village



Samuel H. Miller Addition
Plat 2-2 Platted 9/21/1927



LET IT BE KNOWN, THIS MAP HAS BEEN PREPARED AS A REFERENCE GUIDE TO PROPERTY OWNERSHIP. WE BELIEVE THIS INFORMATION TO BE CORRECT AND CURRENT. HOWEVER, IT IS NOT INTENDED FOR ANY LEGAL USE, WHETHER IT BE IN SALES, TRANSFERS, TRADES, LEASES OF ANY TYPE, ETC. AND DO NOT ACCEPT RESPONSIBILITY FOR ERRORS OF ANY NATURE OR OMISSIONS CONTAINED HEREIN.

new survey required
for next transfer

Last Revision: 2/18/2011
Walnut Creek Village
unincorporated
east part
T-9, R-5, Sec.20
Walnut Creek Twp.
Holmes County, Ohio

WC-14B

