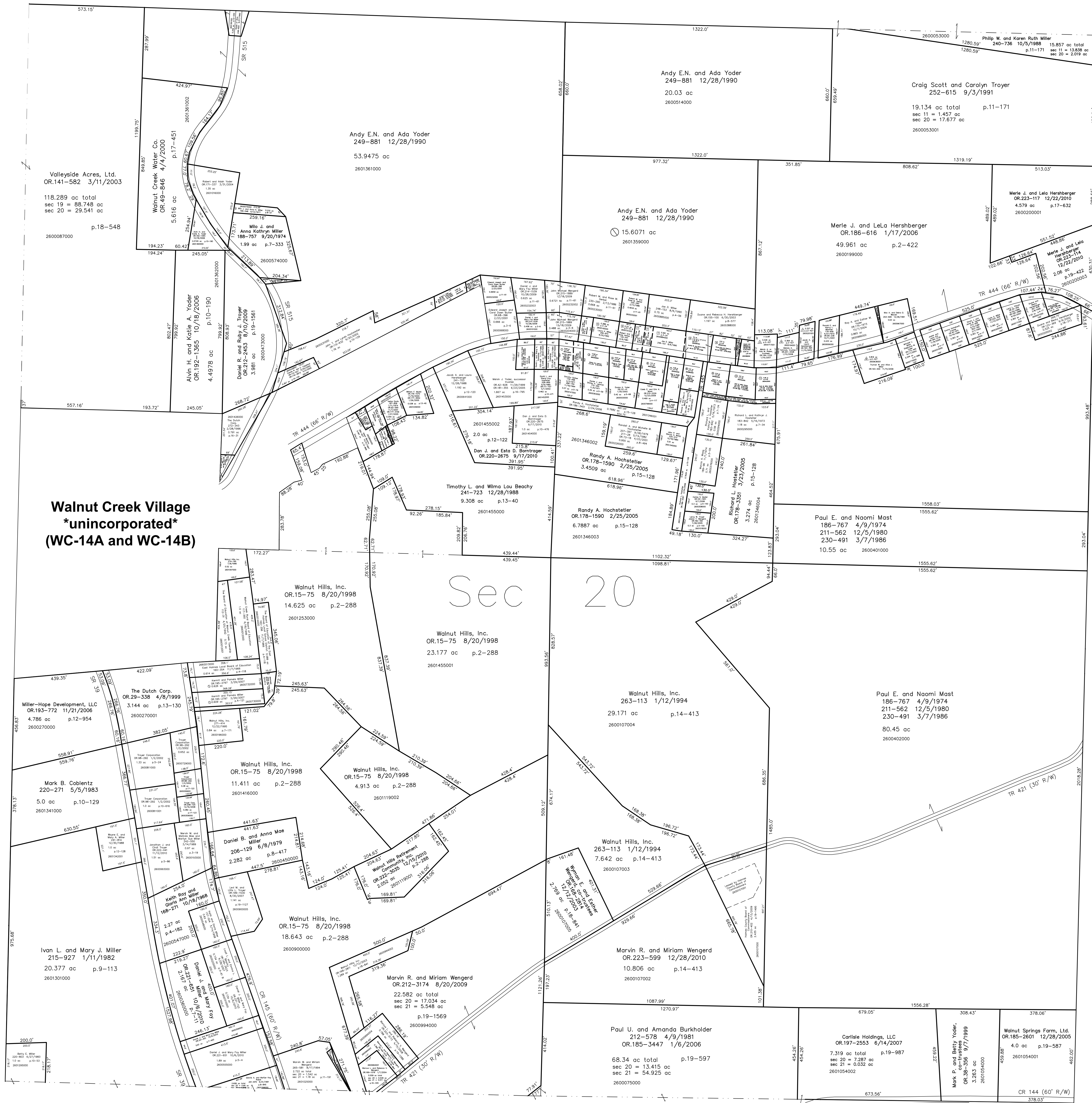
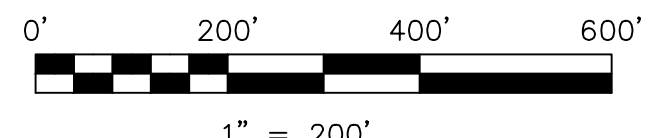


- 2601424000 ① Leroy Beachy, trustee
OR.122-140 9/5/2002
0.0077 ac p.10-352
- 2600900001 ② Marvin W. and Miriam Wengerd
265-581 8/17/1994
0.05 ac p.11-191
- 2600900003 ③ Marvin W. and Miriam Wengerd
267-108 12/29/1994
0.062 ac p.14-685



- △ Hillcrest Allotment Replat
Plot 2-427 Platted 5/11/2006
- Lee Troyer Allotment
Plot 3-24 Platted 7/24/1958
- Wayne Hochstetler Allotment
Plot 3-50 Platted 4/23/1959



LET IT BE KNOWN, THIS MAP HAS BEEN PREPARED AS A REFERENCE GUIDE TO PROPERTY OWNERSHIP. WE BELIEVE THIS INFORMATION TO BE CORRECT AND CURRENT, HOWEVER IT IS NOT INTENDED FOR ANY LEGAL USE, WHETHER IT BE IN SALES, TRANSFERS, TRUSTS, LEASES OF ANY TYPE, ETC., AND DO NOT ACCEPT RESPONSIBILITY FOR ERRORS OR ANY NATURE OR OMISSIONS CONTAINED HEREIN.

○ new survey required for next transfer

Last Revision: 12/28/2010

**T-9, R-5, Sec.20
Walnut Creek Twp.
Holmes County, Ohio**

WC-14