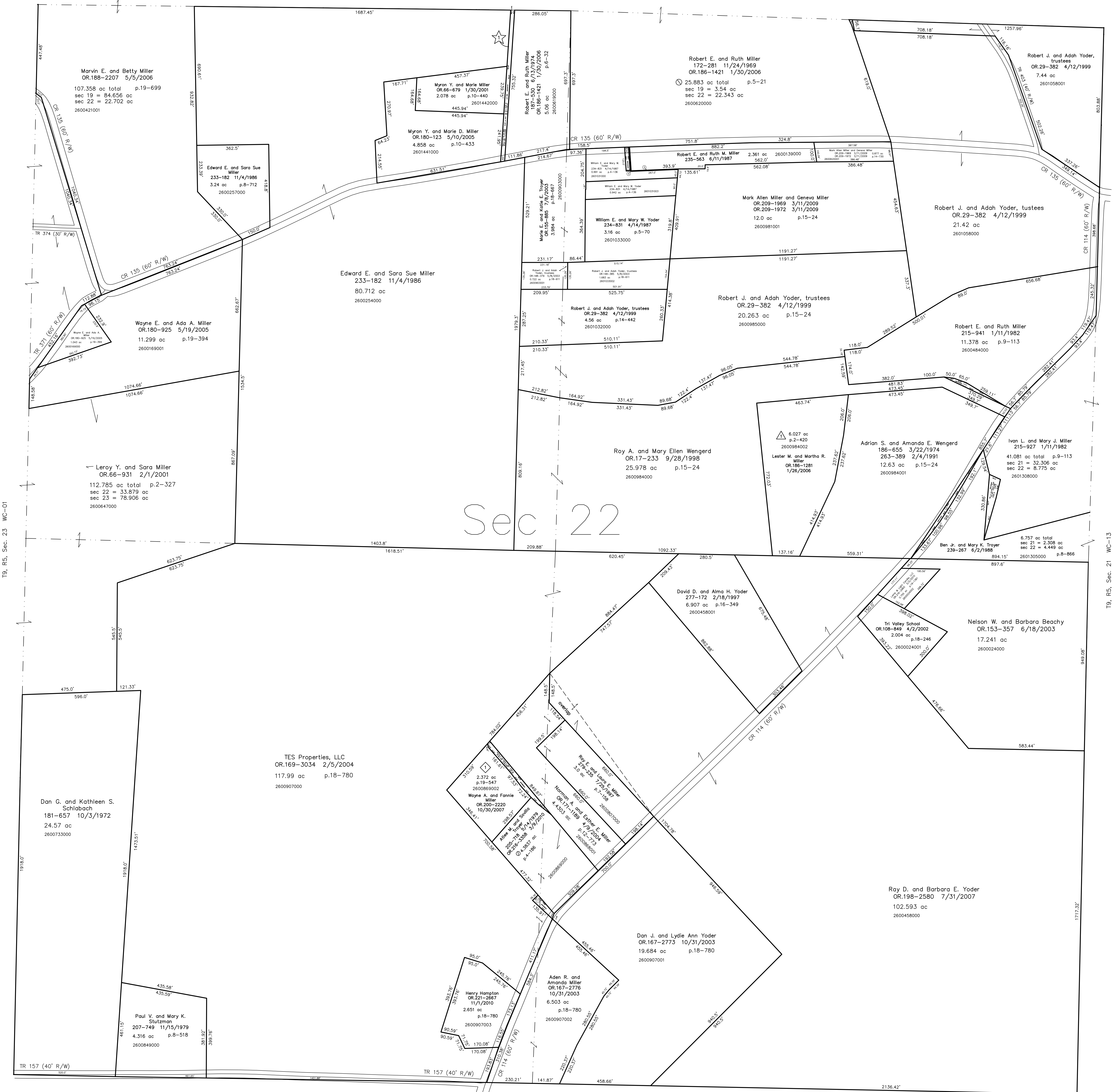


- 260098001 ① Allee M. and Savilla Troyer
238-691 7/12/1988
0.0898 ac p.12-32
- 2601031002 ② Robert E. and Ruth Miller
282-904 12/30/1993
0.014 ac p.14-401
- 2601511000 ③ Adrian S. and Amanda E. Wengert
OR.12-760 7/16/1998
0.172 ac p.16-792
- 2601510000 ④ Roy A. and Mary Ellen Wengert
OR.17-233 9/28/1998
0.094 ac p.16-792
- 2600139001 ⑤ William E. and Mary W. Yoder
282-902 12/30/1993
0.014 ac p.14-401
- 2601034000 ⑥ William E. and Mary W. Yoder
234-831 4/14/1987
0.055 ac p.8-691

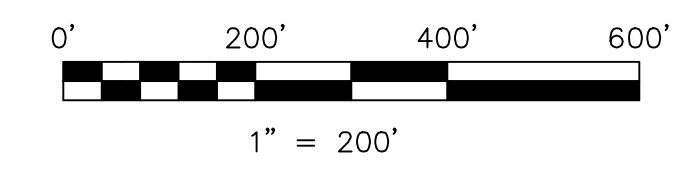


T9, R5, Sec. 23 WC-01

T9, R5, Sec. 21 WC-13

Sec 22

- ☆ Miller Road Subdivision
Plat 2-468 Platted 11/12/2008
- △ Spring Valley Subdivision
Plat 2-420 Platted 1/9/2006
- ◇ Walnut Valley Subdivision
Plat 19-547 Platted 11/17/2005



LET IT BE KNOWN, THIS MAP HAS BEEN PREPARED AS A REFERENCE GUIDE TO PROPERTY OWNERSHIP. WE BELIEVE THIS INFORMATION TO BE CORRECT AND CURRENT, HOWEVER IT IS NOT INTENDED FOR ANY LEGAL USE, WHETHER IT BE IN SALES, TRANSFERS, TRADES, LEASES OF ANY TYPE, ETC., AND DO NOT ACCEPT RESPONSIBILITY FOR ERRORS OF ANY NATURE OR OMISSIONS CONTAINED HEREIN.

new survey required for next transfer

Last Revision: 11/1/2010

T-9, R-5, Sec.22
Walnut Creek Twp.
Holmes County, Ohio

WC-07