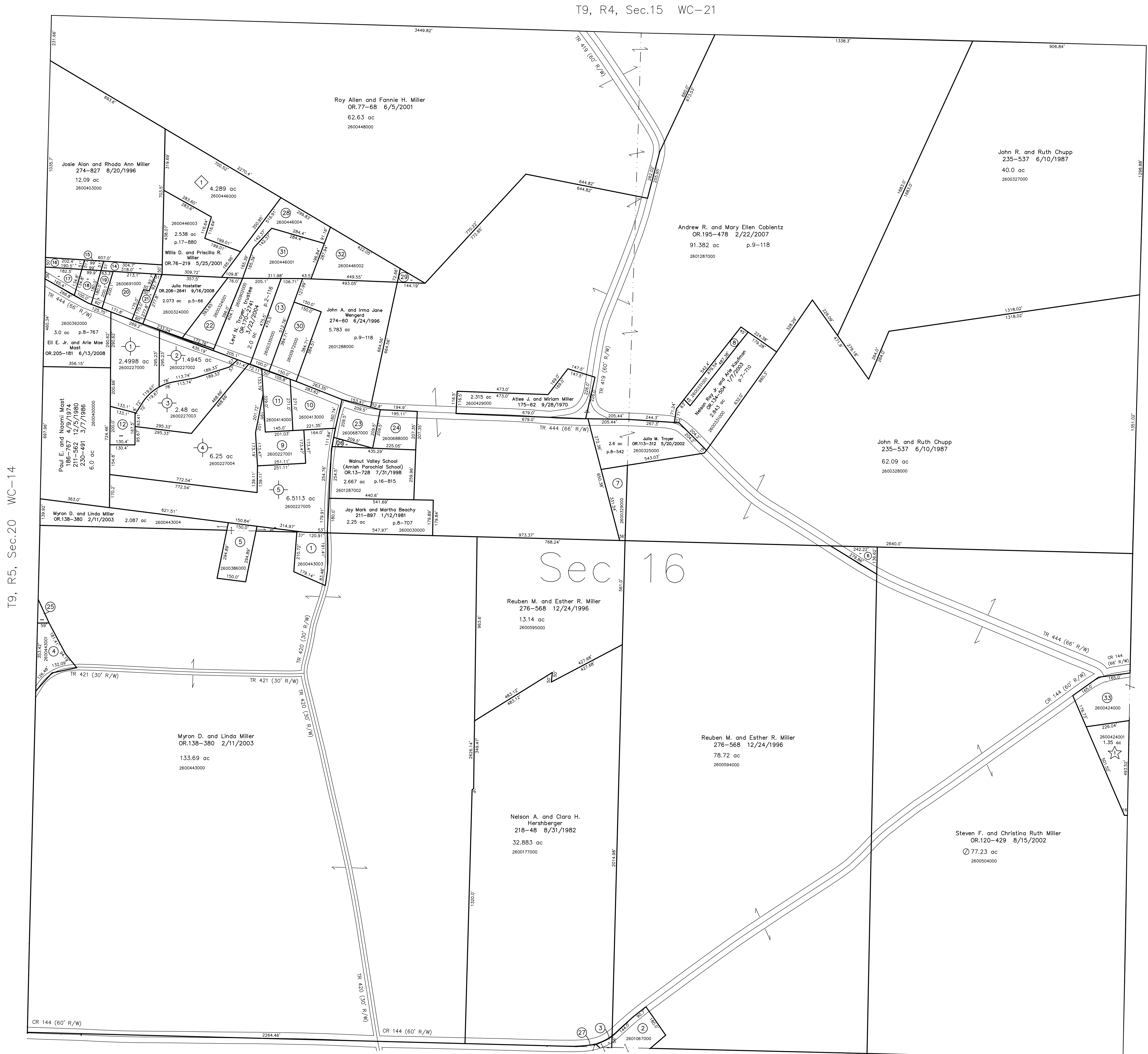


- 2600443003 ① Debra Kay Miller
OR.123-851 9/27/2002
OR.124-20 9/30/2002
Myron D. Miller
OR.199-1874 9/5/2007
0.928 ac p.18-344
- 2601067000 ② John E. Jr. and Sharon E. Ling
237-8 11/2/1987
0.88 ac p.5-160
- 2600177001 ③ John E. Jr. and Sharon E. Ling
250-73 1/15/1991
0.06 ac p.12-598
- 2600443001 ④ Donald Q. and Sherilyn D. Mast, co-trustees
OR.49-116 3/22/2000
0.865 ac p.12-652
- 2600386000 ⑤ Avo and Clara Mast, co-trustees
250-577 3/8/1991
1.013 ac p.8-358
- 2600330000 ⑥ John R. and Ruth Chupp
235-537 6/10/1987
0.4 ac
- 2600329000 ⑦ John R. and Ruth Chupp
235-537 6/10/1987
0.53 ac
- 2600331001 ⑧ Nelson Roy Jr. and Arle Kaufman
231-82 5/7/1986
0.507 ac p.10-560
- 2600227001 ⑨ Keith D. and Diane M. Theibaud
OR.2-452 1/28/1998
1.1122 ac p.14-48
- 2600413000 ⑩ David P. and Sandra L. Meinke
202-120 5/30/1978
1.2035 ac p.8-204
- 2600414000 ⑪ Chad A. and Viki L. Stutzman
279-1 7/11/1997
1.0 ac p.5-35
- 2600634000 ⑫ Randall L. and Lorraine M. Ramsey
279-416 8/8/1997
0.56 ac p.4-151
- 2600335000 ⑬ Levi N. Troyer, trustee
OR.170-2743 3/22/2004
1.13 ac p.4-109
- 2600694000 ⑭ Willis D. and Priscilla R. Miller
242-145 1/31/1989
0.37 ac p.7-296
- 2601514000 ⑮ Wayne J. Yoder
OR.197-1933 6/7/2007
0.115 ac p.19-469
- 2600839000 ⑯ Josie Alan and Rhoda Ann Miller
OR.168-1206 11/21/2003
0.34 ac p.4-185
- 2600840000 ⑰ Josie Alan and Rhoda Ann Miller
OR.168-1206 11/21/2003
0.34 ac p.4-185
- 2600379000 ⑱ Wayne J. Yoder
OR.197-1933 6/7/2007
0.39 ac p.4-185
- 2600692000 ⑲ Willis D. and Priscilla R. Miller
242-145 1/31/1989
0.27 ac p.4-185
- 2600691000 ⑳ Willis D. and Priscilla R. Miller
242-145 1/31/1989
0.71 ac p.4-185
- 2600693000 ㉑ Willis D. and Priscilla R. Miller
242-145 1/31/1989
0.31 ac p.4-185
- 2600324001 ㉒ Joel L. Troyer
277-494 3/18/1997
1.067 ac p.10-852
- 2600687000 ㉓ Wyman D. and Ruth Miller
241-95 10/31/1988
1.0 ac p.7-296
- 2600688000 ㉔ Wyman D. and Ruth Miller
241-95 10/31/1988
1.0 ac p.8-606
- 2600443002 ㉕ Donald Q. and Sherilyn D. Mast, co-trustees
OR.49-116 3/22/2000
0.086 ac p.14-366
- 2601287001 ㉖ Wyman D. and Ruth Miller
OR.13-725 7/31/1998
0.117 ac p.16-815
- 2600178002 ㉗ Marcus M. and Sharon Rober
OR.63-918 12/13/2000
0.017 ac p.17-722
- 2600446004 ㉘ Joel L. Troyer
OR.76-222 5/25/2001
1.42 ac p.17-880
- 2600446005 ㉙ Roy Allen and Fannie H. Miller
OR.77-68 6/5/2001
0.119 ac p.17-880
- 2600972000 ㉚ Gregory E. and Karen A. Curry
OR.40-455 10/12/1999
1.325 ac p.8-711
- 2600446001 ㉛ Joel L. Troyer
267-432 1/30/1995
1.81 ac p.14-717
- 2600446002 ㉜ John A. and Irma Jane Wengard
OR.76-216 5/25/2001
1.743 ac p.17-880
- 2600424000 ㉝ A. Roscoe and Mottie Miller
OR.79-422 6/28/2001
1.429 ac p.18-2

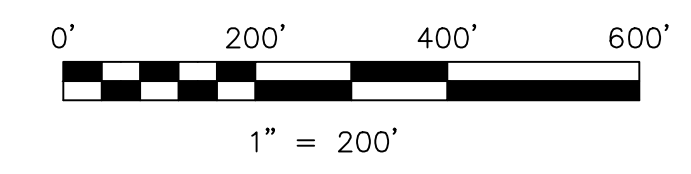


T9, R5, Sec.20 WC-14

T9, R4, Sec.17 WC-26

- ◇ C & E Subdivision
Plat 2-332 Platted 6/5/2001
2600446000 ◇ Duane R. and Rebecca Hershberger
OR.77-124 6/5/2001
4.289 ac p.2-332
- Eastern Hochstetler Allotment
Plat 2-389 Platted 12/8/2004
2600227000 ○ John T. aka John Hochstetler
OR.177-491 12/17/2004
OR.175-3126 5/4/2005
2.4998 ac p.2-389
2600227002 ○ Willard and M. Kay Hostetler
OR.177-496 12/17/2004
1.4945 ac p.2-389
2600227003 ○ Carole R. aka E. Copeland
OR.177-501 12/17/2004
OR.179-2673 5/2/2005
2.48 ac p.2-389
2600227004 ○ Randy A. and Michelle Hochstetler
OR.177-486 12/17/2004
6.25 ac p.2-389
2600227005 ○ Richard L. and Jean Hostetler
OR.177-506 12/17/2004
6.5113 ac p.2-389
- ☆ Hickory Nut Row Subdivision
Plat 19-1264 Platted 3/12/2008
2600424001 ☆ Jesse A. and Lisa M. Miller
OR.203-2862 4/9/2008
1.35 ac p.19-1264

T9, R4, Sec.25 WC-19



LET IT BE KNOWN, THIS MAP HAS BEEN PREPARED AS A REFERENCE GUIDE TO PROPERTY OWNERSHIP. WE BELIEVE THIS INFORMATION TO BE CORRECT AND CURRENT. HOWEVER, IT IS NOT INTENDED FOR ANY LEGAL USE, WHETHER IT BE IN SALES, TRANSFERS, TRADES, LEASES OF ANY TYPE, ETC., AND DO NOT ACCEPT RESPONSIBILITY FOR ERRORS OF ANY NATURE OR OMISSIONS CONTAINED HEREIN.

○ new survey required for next transfer

Last Revision: 9/16/2008
T-9, R-4, Sec.16
Walnut Creek Twp.
Holmes County, Ohio

WC-20