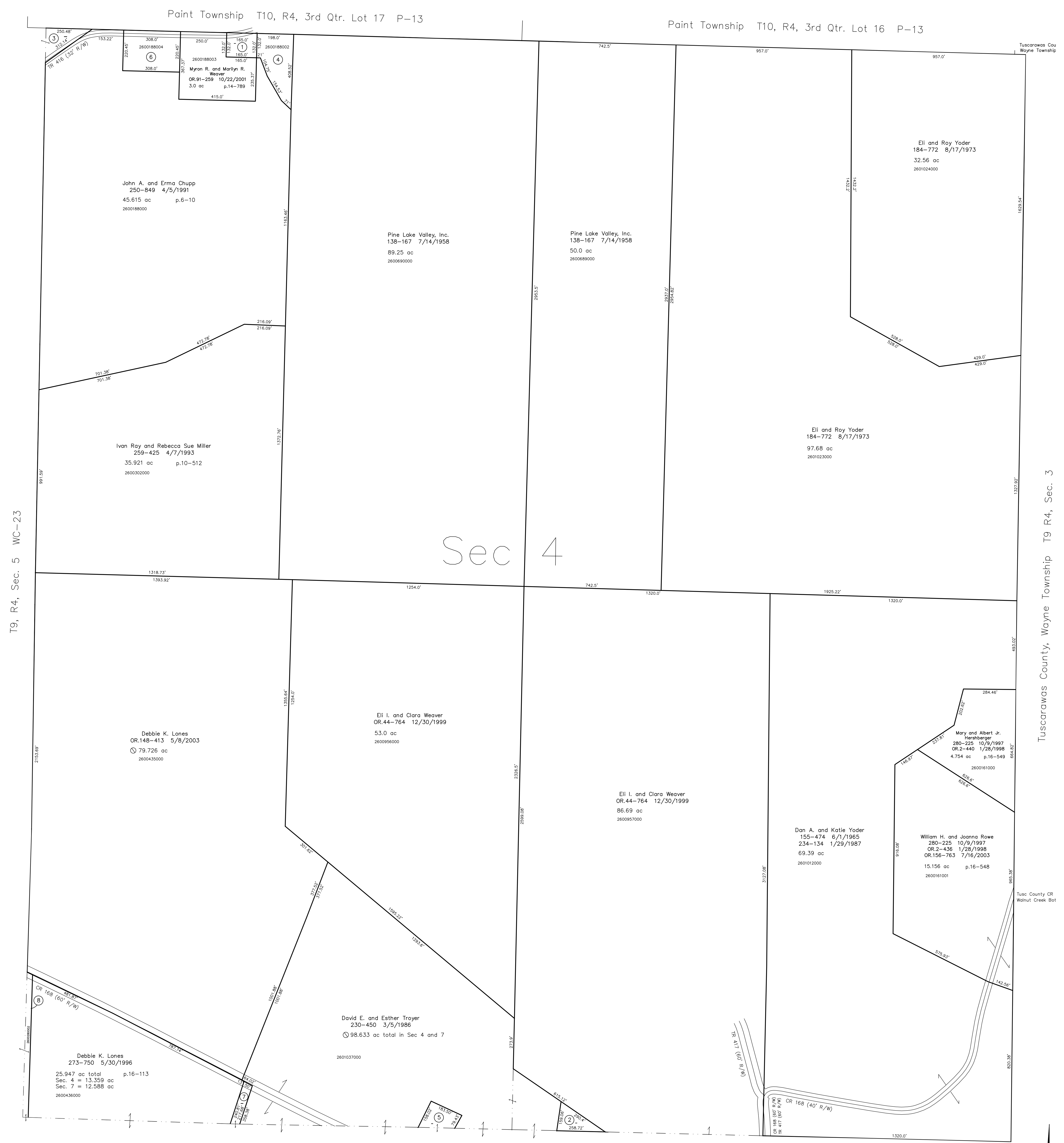
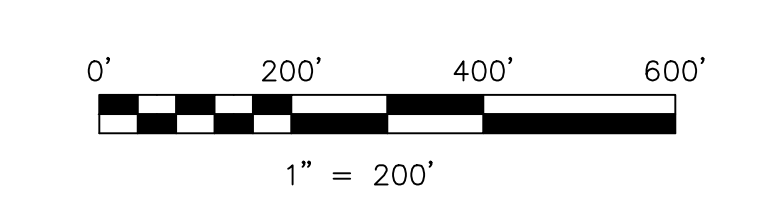


- 2601515000 ① Directors of Mennonist Church of Walnut Creek Twp.
23-291 12/28/1858
0.3 ac
- 2601013000 ② Dan A. and Katie Yoder
155-474 6/1/1965
234-134 1/29/1987
0.46 ac
- 2600188001 ③ David R. and Miriam A. Yoder
OR.30-811 5/3/1999
0.54 ac p.14-117
- 2600188002 ④ Troy E. and Linda K. Phillips
265-855 9/7/1994
1.281 ac p.14-581
- 2601035001 ⑤ Marcus W. Miller and Leanna Troyer
OR.140-491 3/3/2003
0.492 ac p.18-539
- 2600188004 ⑥ Joseph D. and Betty Sue Chupp
OR.145-268 4/11/2003
1.559 ac p.18-568
- 2600436003 ⑦ FederRidge Farm, Ltd.
OR.190-2122 7/26/2006
OR.190-2129 7/26/2006
0.263 ac p.19-747
- 2600280002 ⑧ Ervin A. Miller
OR.190-2156 7/26/2006
OR.190-2161 7/26/2006
0.536 ac p.19-771



T9, R4, Sec. 5 WC-23

T9, R4, Sec.7 WC-28



LET IT BE KNOWN, THIS MAP HAS BEEN PREPARED AS A REFERENCE GUIDE TO PROPERTY OWNERSHIP. WE BELIEVE THIS INFORMATION TO BE CORRECT AND CURRENT. HOWEVER, IT IS NOT INTENDED FOR ANY LEGAL USE, WHETHER IT BE IN SALES, TRANSFERS, TRADES, LEASES OF ANY TYPE, ETC. AND DO NOT ACCEPT RESPONSIBILITY FOR ERRORS OF ANY NATURE OR OMISSIONS CONTAINED HEREIN.

new survey required for next transfer

Last Revision: 7/26/2006
T-9, R-4, Sec.4
Walnut Creek Twp.
Holmes County, Ohio

WC-29

Tuscarawas County, Wayne Township T9 R4, Sec. 3

Tuscarawas County
Walnut Creek Bot