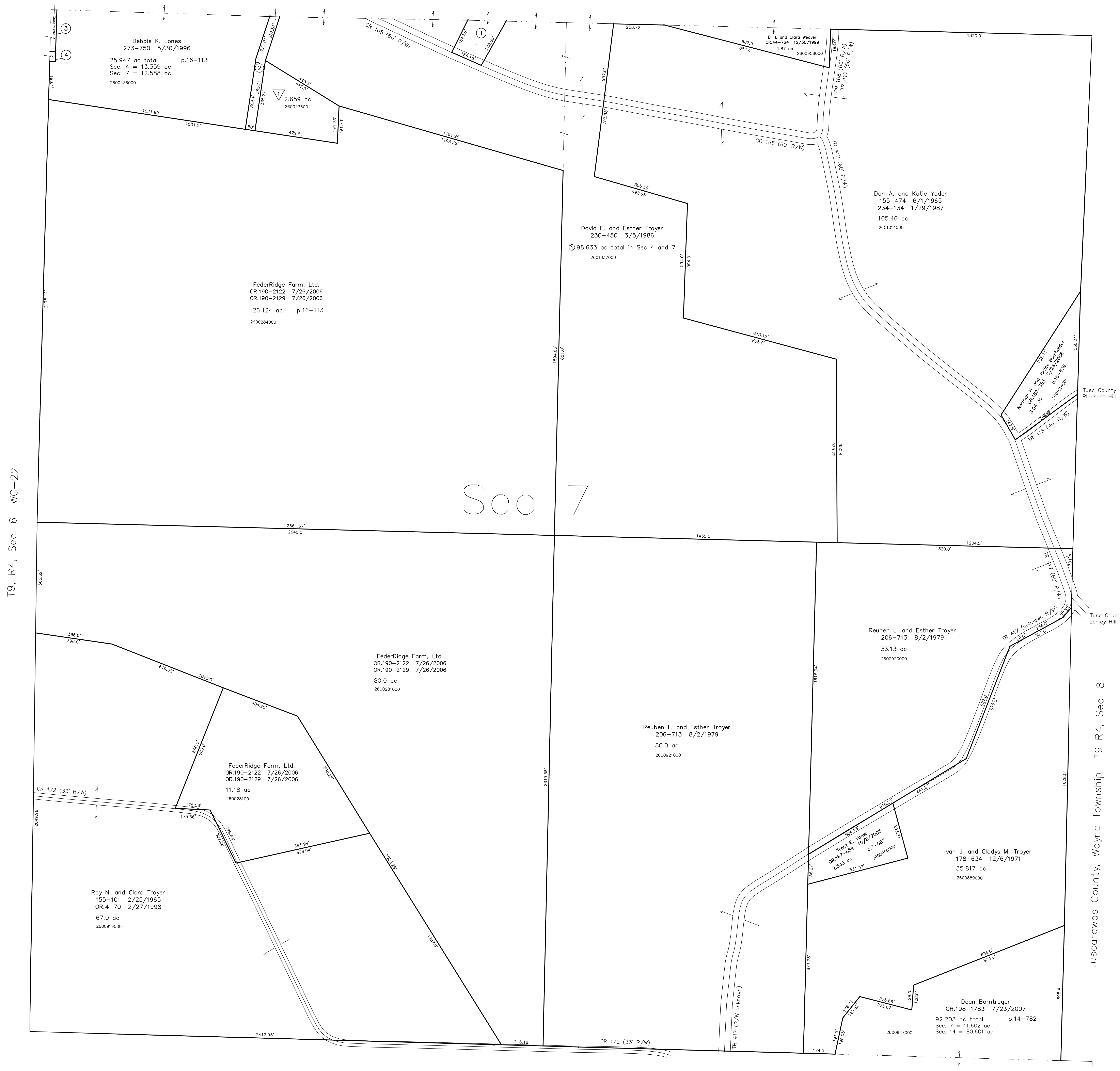


2601035001 ① Marcus W. Miller and Leanna Troyer
 OR.140-491 3/3/2003
 0.875 ac p.16-539

2600436003 ② FederRidge Farm, Ltd.
 OR.190-2122 7/26/2006
 OR.190-2129 7/26/2006
 0.688 ac p.19-747

2800280002 ③ Ervin A. Miller
 OR.190-2156 7/26/2006
 OR.190-2161 7/26/2006
 0.147 ac p.19-771

T9, R4, Sec.4 WC-29



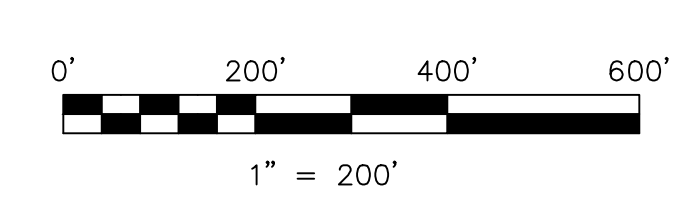
T9, R4, Sec. 6 WC-22

Sec 7

T9, R4, Sec.14 WC-27

▽ Verrico Subdivision
 Plat 19-688 Platted 4/26/2006

2600436001 ▽ Debbie K. Lones
 273-750 5/30/1996
 2.659 ac p.19-688



LET IT BE KNOWN, THIS MAP HAS BEEN PREPARED AS A REFERENCE GUIDE TO PROPERTY OWNERSHIP. WE BELIEVE THIS INFORMATION TO BE CORRECT AND CURRENT. HOWEVER, IT IS NOT INTENDED FOR ANY LEGAL USE, WHETHER IT BE IN SALES, TRANSFERS, TRADES, LEASES OF ANY TYPE, ETC. AND DO NOT ACCEPT RESPONSIBILITY FOR ERRORS OF ANY NATURE OR OMISSIONS CONTAINED HEREIN.

new survey required for next transfer

Last Revision: 7/23/2007
T-9, R-4, Sec.7
Walnut Creek Twp.
Holmes County, Ohio

WC-28

Tuscarawas County, Wayne Township T9 R4, Sec. 8

Tusc County Pleasant Hill

Tusc Coun Lehey Hill