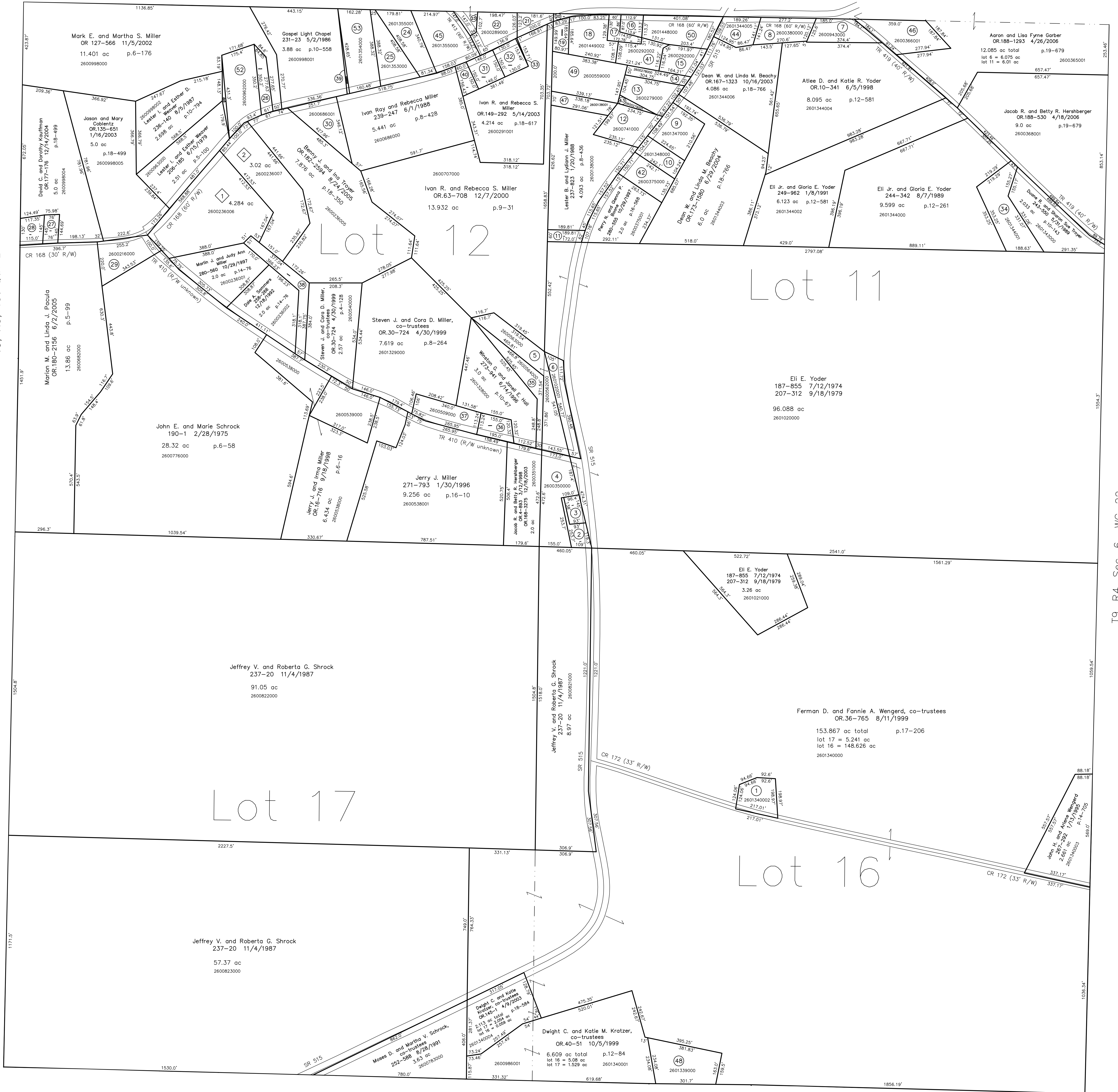


- 260134002 ① Ferman D. and Fannie A. Wengerd, co-trustees  
OR.36-768 8/11/1999  
0.767 ac p.12-402
- 2600352000 ② Jacob R. and Betty J. Hershberger  
OR.4-893 3/12/1998  
OR.168-3275 12/18/2003  
0.293 ac p.4-48
- 2600353000 ③ Jacob R. and Betty J. Hershberger  
OR.4-893 3/12/1998  
OR.168-3275 12/18/2003  
0.299 ac p.3-29
- 2600350000 ④ Jacob R. and Betty J. Hershberger  
OR.4-893 3/12/1998  
OR.168-3275 12/18/2003  
1.716 ac p.4-48
- 2600562000 ⑤ Wayne L. and Linda Kay Miller  
248-556 9/5/1990  
1.65 ac p.10-107
- 2601020001 ⑥ Wayne L. and Linda Kay Miller  
253-139 10/16/1991  
0.732 ac p.12-771
- 2600943000 ⑦ Zion United Church of Christ  
248-793 12/21/1990  
0.75 ac p.3-288
- 2600380000 ⑧ Abe L. and Frances A. Mast  
156-351 9/3/1985  
0.77 ac
- 2601347000 ⑨ Alvin E. and Betty S. and David A. Raber  
OR.178-2968 12/6/2004  
1.0 ac p.10-151
- 2601348000 ⑩ Alvin E. and Betty S. Raber  
OR.11-154 6/22/1998  
0.556 ac p.8-332
- 2600706000 ⑪ Ivan R. and Rebecca S. Miller  
OR.63-708 12/7/2000  
0.249 ac p.9-31
- 2600741000 ⑫ Kenneth L. Schlabach and Edith A. Helmuth  
206-272 6/25/1979  
OR.15-952 9/3/1998  
1.0 ac p.8-410
- 2600279000 ⑬ Crystal Moe Hostettler, trustee  
OR.63-678 12/7/2000  
0.898 ac p.8-415
- 2600278000 ⑭ Crystal Moe Hostettler, trustee  
OR.63-678 12/7/2000  
0.361 ac p.8-427
- 2600292000 ⑮ Moses S. and Katie Wengerd, co-trustees  
278-507 6/4/1997  
0.635 ac p.16-438
- 2600809000 ⑯ Moses S. and Katie Wengerd  
OR.163-460 9/5/2003  
0.261 ac p.8-59
- 2600292001 ⑰ Moses S. and Katie Wengerd  
OR.163-460 9/5/2003  
0.287 ac p.10-663
- 2601449002 ⑱ Mahlon M. and Mary S. Miller  
236-319 8/7/1987  
1.074 ac p.11-159
- 2600558000 ⑲ Mahlon M. and Mary S. Miller  
205-798 5/21/1979  
237-717 1/7/1988  
0.308 ac p.11-159
- 2601137000 ⑳ Wayne-Dalton Corp.  
200-840 1/17/1987  
225-068 12/6/1984  
225-669 12/6/1984  
0.13 ac p.4-132
- 2600287000 ㉑ Betty J. Hostettler  
151-75 9/3/1963  
225-570 11/27/1984  
0.37 ac p.4-58
- 2600289000 ㉒ Betty J. Hostettler  
203-411 9/25/1978  
225-570 11/27/1984  
0.84 ac p.8-252
- 2600965000 ㉓ Raymond L. and Anna Hershberger  
256-832 8/20/1992  
0.2 ac p.8-521
- 2601355001 ㉔ Neil S. and Denise L. Anderson  
OR.69-514 3/4/2001  
1.0 ac p.12-580
- 2601353000 ㉕ Gary and Wilma J. Miller  
221-103 8/7/1983  
1.0 ac p.10-169
- 2600964000 ㉖ Lester I. and Esther Weaver  
206-185 6/15/1979  
0.43 ac p.7-750
- 2600007000 ㉗ Andrew B. and Betty M. Weaver  
OR.189-2092 6/12/2006  
0.24 ac p.7-173
- 2600008000 ㉘ Andrew B. and Betty M. Weaver  
OR.189-2092 6/12/2006  
0.36 ac p.7-101
- 2600216000 ㉙ Amos M. and Angela Moe Chupp  
OR.97-440 12/26/2001  
1.03 ac p.4-58
- 2600686001 ㉚ Jr. and Jenny Lou Raber  
245-42 10/12/1989  
1.0 ac p.12-315
- 2600926000 ㉛ Ivan R. and Rebecca S. Miller  
OR.187-2810 4/4/2006  
0.5 ac p.7-249
- 2600925000 ㉜ Ivan R. and Rebecca S. Miller  
OR.187-2810 4/4/2006  
0.45 ac p.7-100
- 2600291000 ㉝ Ivan R. and Rebecca S. Miller  
OR.187-2810 4/4/2006  
0.007 ac p.7-700
- 2601344001 ㉞ Duane and Sharon Sue Troyer  
244-168 7/21/1989  
1.5 ac p.12-260
- 2600564000 ㉟ Wayne L. and Linda Kay Miller  
248-556 9/5/1990  
0.81 ac p.8-311
- 2600537000 ㊱ Steven J. and Cora D. Miller, co-trustees  
OR.54-778 7/5/2000  
0.45 ac p.8-231
- 2600509000 ㊲ Steven J. and Cora D. Miller, co-trustees  
OR.30-724 4/30/1999  
0.9 ac p.5-89
- 2600236003 ㊳ Dale A. Sommerer  
288-266 12/18/1992  
0.892 ac p.14-111
- 2600998003 ㊴ Gary and Wilma J. Miller  
228-509 1/13/1983  
0.063 ac p.14-132
- 2600924000 ㊵ Ivan R. and Rebecca S. Miller  
OR.187-2810 4/4/2006  
0.299 ac p.8-290
- 2600292002 ㊶ Moses S. and Katie Wengerd  
278-29 4/25/1997  
0.6703 ac p.14-639
- 2600375000 ㊷ Alvin E. and Betty S. Raber  
OR.11-154 6/22/1998  
0.785 ac p.8-333
- 2600279001 ㊸ Kenneth L. and Edith A. Schlabach  
OR.15-501 8/28/1998  
0.102 ac p.16-840
- 2601344005 ㊹ David J. Schlabach  
OR.170-1046 2/27/2004  
0.612 ac p.16-766
- 2601355000 ㊺ Timothy J. and Renita J. Nehinger  
OR.1-288 1/6/1998  
1.501 ac p.8-272
- 2600366001 ㊻ Trustees of Faith Christian Fellowship  
OR.189-195 4/25/2006  
1.203 ac p.19-679
- 2600138001 ㊼ Mahlon M. and Mary S. Miller  
OR.192-295 10/31/2006  
0.5 ac p.18-851
- 2601339000 ㊽ Dwight C. and Katie M. Kratzer, co-trustees  
OR.40-53 10/5/1999  
1.51 ac p.10-112
- 2600559000 ㊾ Mahlon M. and Mary S. Miller  
204-881 1/30/1979  
1.639 ac p.8-371
- 2601448000 ㊿ Moses S. and Katie Wengerd  
278-29 4/25/1997  
1.2237 ac p.10-482
- 2600539000 ① Jerry J. and Irma Miller  
OR.16-716 9/18/1998  
1.6 ac p.4-128
- 2600962000 ② Lester I. and Esther Weaver  
206-185 6/15/1979  
1.5 ac p.5-64
- 2601354000 ③ Gary and Wilma J. Miller  
221-103 8/7/1983  
1.5 ac p.10-169

T9, R5, 1st Qtr. Lot 13 WC-10

T9, R5, 1st Qtr. Lot 18 WC-10



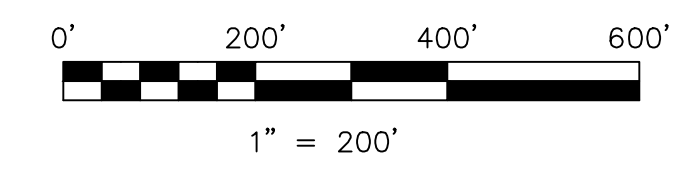
- ① Gobblers Knob Subdivision  
Plat 18-349 Platted 8/9/2002
- 2600236006 ① David F. and Lois S. Hostettler  
OR.122-291 9/9/2002  
4.284 ac p.18-349
- 2600236007 ② Benny J. and Ina Troyer  
OR.122-294 9/9/2002  
3.02 ac p.18-349

T9, R5, 1st Qtr. Lot 22 WC-15

T9, R5, 1st Qtr. Lot 21 WC-15

Last Revision: 10/31/2006

**T-9, R-5, 1st. Qtr.**  
**Lots 11,12,16,17**  
**Walnut Creek Twp.**  
**Holmes County, Ohio**



LET IT BE KNOWN, THIS MAP HAS BEEN PREPARED AS A REFERENCE GUIDE TO PROPERTY OWNERSHIP. WE BELIEVE THIS INFORMATION TO BE CORRECT AND CURRENT. HOWEVER, IT IS NOT INTENDED FOR ANY LEGAL USE, WHETHER IT BE IN SALES, TRANSFERS, TRADES, LEASES OF ANY TYPE, ETC., AND DO NOT ACCEPT RESPONSIBILITY FOR ERRORS OF ANY NATURE OR OMISSIONS CONTAINED HEREIN.

new survey required for next transfer

**WC-16**

T9, R4, Sec. 6 WC-22