

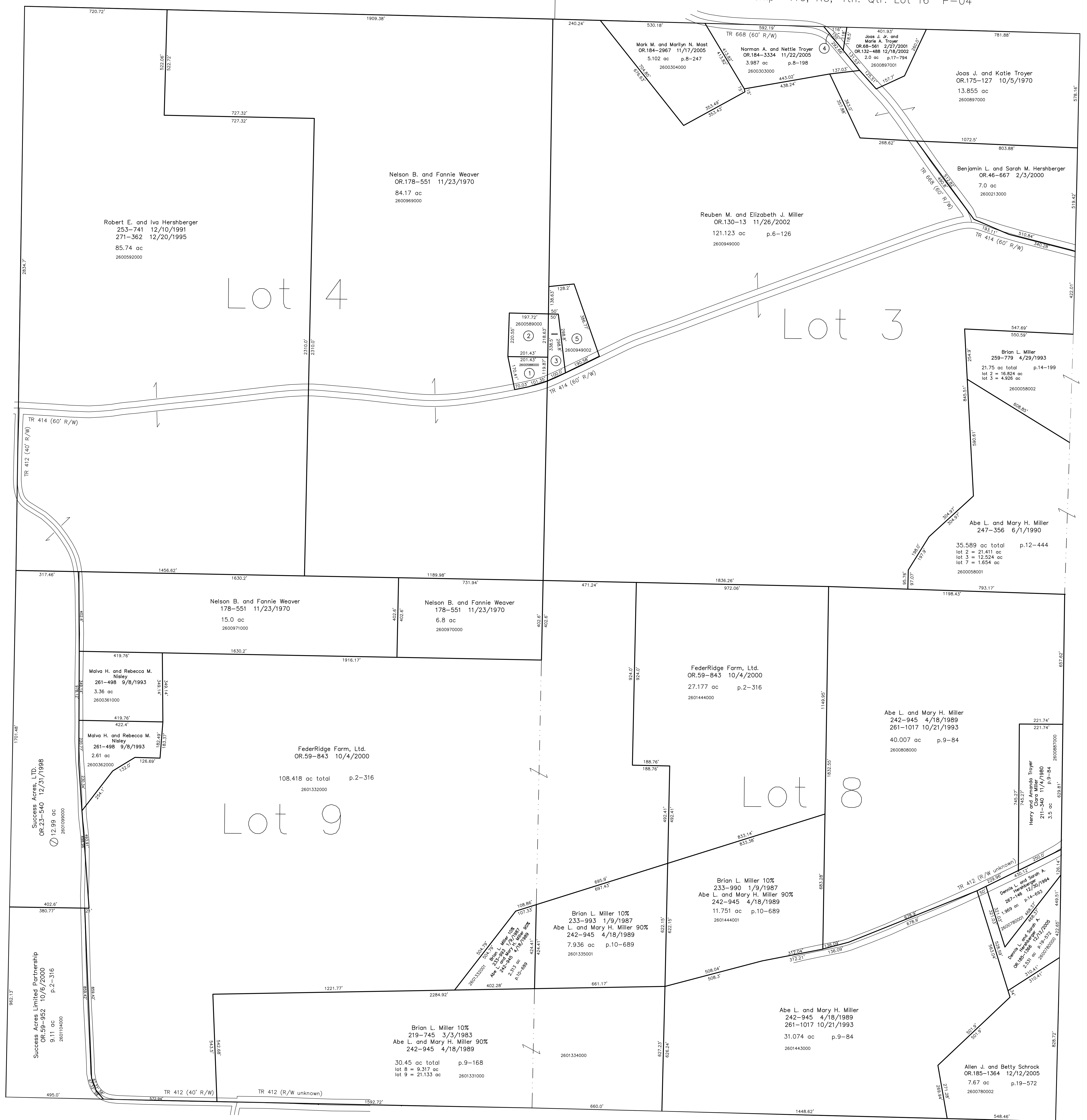
- 2600588000 ① Jonas M. Miller, trustee  
Sarah A. Miller, trustee  
OR.51-837 5/10/2000  
OR.51-842 5/10/2000  
0.82 ac p.16-272
- 2600589000 ② Jonas M. Miller, trustee  
Sarah A. Miller, trustee  
OR.51-837 5/10/2000  
OR.51-842 5/10/2000  
0.95 ac p.16-273
- 2600949001 ③ Jonas M. Miller, trustee  
Sarah A. Miller, trustee  
OR.51-837 5/10/2000  
OR.51-842 5/10/2000  
0.522 ac p.16-743
- 2600897002 ④ Joas J. Jr. and Marie A. Troyer  
OR.68-561 2/27/2001  
OR.132-488 12/19/2002  
0.158 ac p.17-794
- 2600949002 ⑤ Jonas M. Miller, trustee  
Sarah A. Miller, trustee  
OR.157-251 7/18/2003  
1.465 ac p.18-678

Paint Township T10, R5, 4th. Qtr. Lot 29 P-04

Paint Township T10, R5, 4th. Qtr. Lot 16 P-04

T9, R5, 1st Qtr. Lot 5 WC-06

T9, R5, 1st Qtr. Lot 10 WC-06



T9, R5, 1st Qtr. Lot 14 WC-10

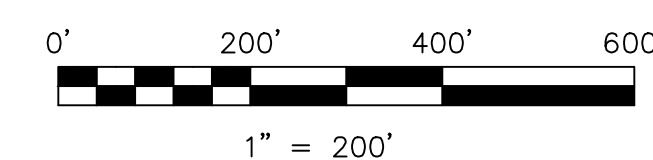
T9, R5, 1st Qtr. Lot 13 WC-10

T9, R5, 1st Qtr. Lot 2 WC-17

T9, R5, 1st Qtr. Lot 7 WC-17

Last Revision: 12/12/2005

**T-9, R-5, 1st. Qtr.**  
**Lots 3,4,8,9**  
**Walnut Creek Twp.**  
**Holmes County, Ohio**



LET IT BE KNOWN, THIS MAP HAS BEEN PREPARED AS A REFERENCE GUIDE TO PROPERTY OWNERSHIP. WE BELIEVE THIS INFORMATION TO BE CORRECT AND CURRENT. HOWEVER, IT IS NOT INTENDED FOR ANY LEGAL USE, WHETHER IT BE IN SALES, TRANSFERS, TRADES, LEASES OF ANY TYPE, ETC. AND DO NOT ACCEPT RESPONSIBILITY FOR ERRORS OF ANY NATURE OR OMISSIONS CONTAINED HEREIN.

new survey required for next transfer

**WC-11**