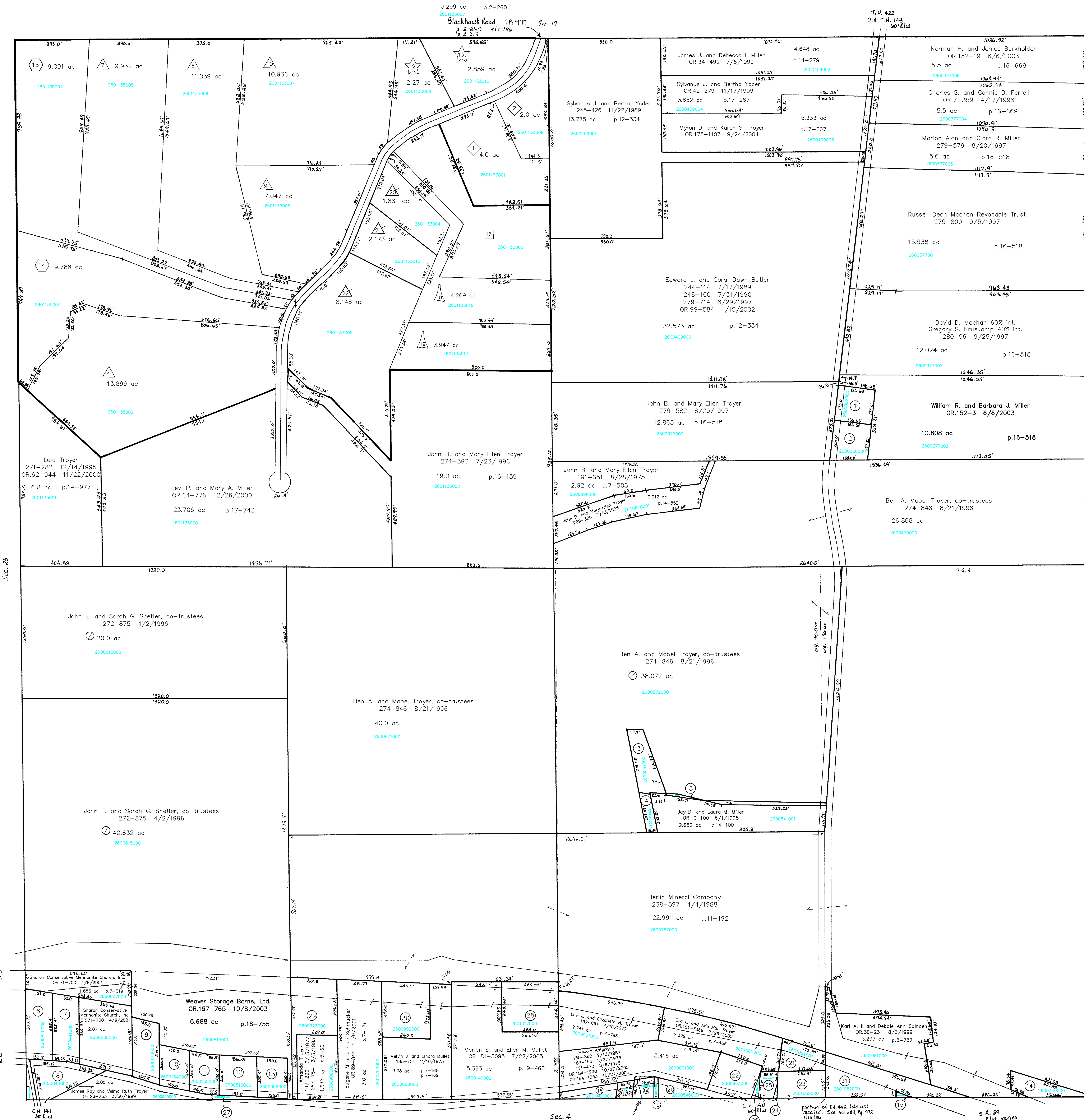


Commissioners of Holmes County, Ohio
OR.62-875 11/21/2000
OR.64-537 12/21/2000

Blackhawk Subdivision No.1
Plat 2-328 Platted 2/1/2001
2601133001 MILLER JAMES L. AND RACHAEL
OR.0048-290 1/27/2000
0.0 ac
2601133009 MILLER CYNDA B.
OR.0070-106 3/20/2001
2.0 ac
Blackhawk Subdivision No.1
Plat 2-265 Platted 12/17/1996



2601135002 KANDEL TODD W. AND JOLENE
OR.0054-905 7/6/2000
13.899 ac
2601135005 BARKMAN MERVIN A. AND PEARL
OR.0009-40 5/15/1998
9.932 ac
2601135006 Karen Tidwell, trustee
OR.30-168 4/26/1999
Stephanie M. Clemens
OR.178-2790 3/15/2005
11.039 ac
2601133006 DAGES CHRISTOPHER AND STEVE G.
AND SUE E.
OR.0061-210 10/26/2000
7.047 ac
2601133007 MILLER CAROL J.
OR.0055-907 7/25/2000
10.936 ac
Replat of Lot 11 in Blackhawk Subdivision No.1
Plat 2-272 Platted 8/29/1997
2601133008 MILLER CAROL J.
OR.0057-693 8/29/2000
2.27 ac
2601133015 MILLER JEFFREY A. AND MELINDA M.
AND SUE E.
OR.0055-907 7/25/2000
2.859 ac
Replat of Lot 5 & 6 in Blackhawk Subdivision No.1
Plat 2-271 Platted 8/25/1997
2601135003 HOCHSTETLER GERALD D. JR. AND VERONICA FAYE
OR.0174-304 7/28/2004
9.788 ac
2601135004 David A. Miller
OR.184-1545 11/1/2005
9.091 ac
Replat of Lot 1 in Blackhawk Subdivision No.1
Plat 2-274 Platted 10/6/1997
2601133003 SZMIK MARY ANN
OR.0028-771 2/24/1999
6.0 ac
Blackhawk Subdivision No.1 Replat of Lot 17
Plat 2-291 Platted 1/12/1999
2601133016 HARMAN MATTHEW B. AND LEANNE M.
OR.0028-771 2/24/1999
4.269 ac
2601133017 John H. III and Lorene K. Mullet
OR.182-3367 8/31/2005
3.947 ac
Replat and Renumbering of Lots 2 & 3
Plat 19-204 Platted 9/30/2004
2601133004 STUTZMAN DAVID A.
OR.0176-2831 12/3/2004
1.881 ac
2601133010 MILLER JESSE J. AND PATRICIA A.
OR.0176-2827 12/3/2004
2.173 ac
2601133005 TROYER PHILLIP L. AND EFFIE
OR.0176-2833 12/3/2004
8.146 ac

Tascanawas County

SCALE 1" = 200'

LET IT BE KNOWN, THIS MAP HAS BEEN PREPARED AS A REFERENCE GUIDE TO PROPERTY OWNERSHIP. WE BELIEVE THIS INFORMATION TO BE CORRECT AND CURRENT. HOWEVER, IT IS NOT INTENDED FOR ANY LEGAL USE, WHETHER IT BE IN SALES, TRANSFERS, TRADES, LEASES OF ANY TYPE, ETC., AND DO NOT ACCEPT RESPONSIBILITY FOR ERRORS OF ANY NATURE OR OMISSIONS CONTAINED HEREIN.

T-9, R-4, Sec. 24
Walnut Creek Twp.
HOLMES COUNTY, OHIO

Last Revision: 11/1/2005

WC-25

- 2600082000 Sedic D. and Carrie A. Gerber
OR.179-664 3/31/2005
0.75 ac p.7-136
- 2600336000 PORTEUS BARBARA
244-241 7/27/1989
0.808 ac p.7-136
- 2600541000 TROYER BEN A. AND MABEL CO-TRUSTEES
274-846 8/2/1996
0.982 ac p.7-280
- 2600542000 TROYER BEN A. AND MABEL CO-TRUSTEES
274-846 8/2/1996
0.266 ac p.7-280
- 2600872001 MILLER JAY D. AND LAURA M.
OR.0010-100 6/1/1998
0.018 ac p.14-100
- 2600440000 SHARON CONSERVATIVE MENNONITE
CHURCH, INC.
OR.0071-700 4/9/2001
1.0343 ac
- 2600441000 SHARON CONSERVATIVE MENNONITE
CHURCH, INC.
OR.0071-700 4/9/2001
0.985 ac p.3-73 B
- 2600843000 STUTZMAN DAVID D. AND ERMA
176-792 5/19/1971
254-673 3/2/1992
0.92 ac p.4-12
- 2600176000 HAMSHER REUBEN AND MABEL
128-190 6/1/1953
OR.0169-501 12/30/2003
1.0 ac
- 2600154000 GERBER TITUS
141-254 8/11/1959
252-169 7/15/1991
277-112 2/11/1997
0.677 ac p.3-66
- 2600155000 MILLER JOAN M.
241-213 11/14/1988
OR.0169-501 12/30/2003
0.677 ac p.3-73
- 2600810000 SHAW LEROY J. AND PATTY
185-610 11/28/1973
0.847 ac p.3-73
- 2600069000 BROWN TEDDY L. AND JANICE L.
174-421 8/11/1970
0.689 ac p.3-84
- 2600340000 JANTZI ROBERT J. AND HEDY I.
227-686 6/12/1985
0.965 ac p.5-160
- 2600130002 MILLER DAVID T.
277-649 4/3/1997
0.018 ac p.16-378
- 2601406000 MILLER ATLEE N. AND MYRNA K.
226-601 3/25/1985
0.352 ac
- 2601405000 YODER LEONA
OR.0174-1738 8/16/2004
0.1676 ac p.10-318
- 2600651000 YODER LEONA
OR.0174-1738 8/16/2004
0.2404 ac p.7-261
- 2600471000 MILLER DONALD G. AND JOANNE M.
181-208 8/24/1972
0.05 ac
- 2600546000 MILLER DONALD G. AND JOANNE M.
277-641 4/3/1997
0.47 ac p.16-377
- 2601064000 YODER SAM L. AND VERBA L.
189-774 2/13/1975
0.679 ac p.7-135
- 2600663000 KLINE CONRAD AND JO ANN
OR.0006-871 4/13/1998
0.94 ac
- 2601062000 YODER DAVID RAY AND MARY ESTA
264-512 5/20/1994
S.E.1/4
- 2601447000 YODER DAVID RAY AND MARY ESTA
264-512 5/20/1994
0.013 ac p.10-800
- 2601082000 Steven E. and Carolyn D. Miller
222-232 5/3/1983
234-683 3/27/1987
OR.54-579 6/29/2000
1.913 ac p.8-758
- 2601050000 DESEYN ROBERT L. JR. AND DEBRA L.
210-771 9/30/1980
223-119 3/21/1984
228-328 8/8/1985
235-930 7/20/1987
OR.184-1233 10/27/2005
0.317 ac p.3-62 B
- 2601447000 GERBER, EMANUEL LAST DEEDED OWNER
92-40 5/2/1923
98-347 5/20/1929
SEE CARD
- 2600815002 WEAVER STORAGE BARN, LTD.
OR.0042-354 11/78/1999
0.111 ac p.17-307
- 2601017000 Wilcox J. and Edna Byer, trustees
OR.178-589 2/9/2005
1.612 ac p.7-212
- 2600323000 Mary E. Kaufman, trustee
OR.46-352 2/22/2000
1.647 ac p.7-716