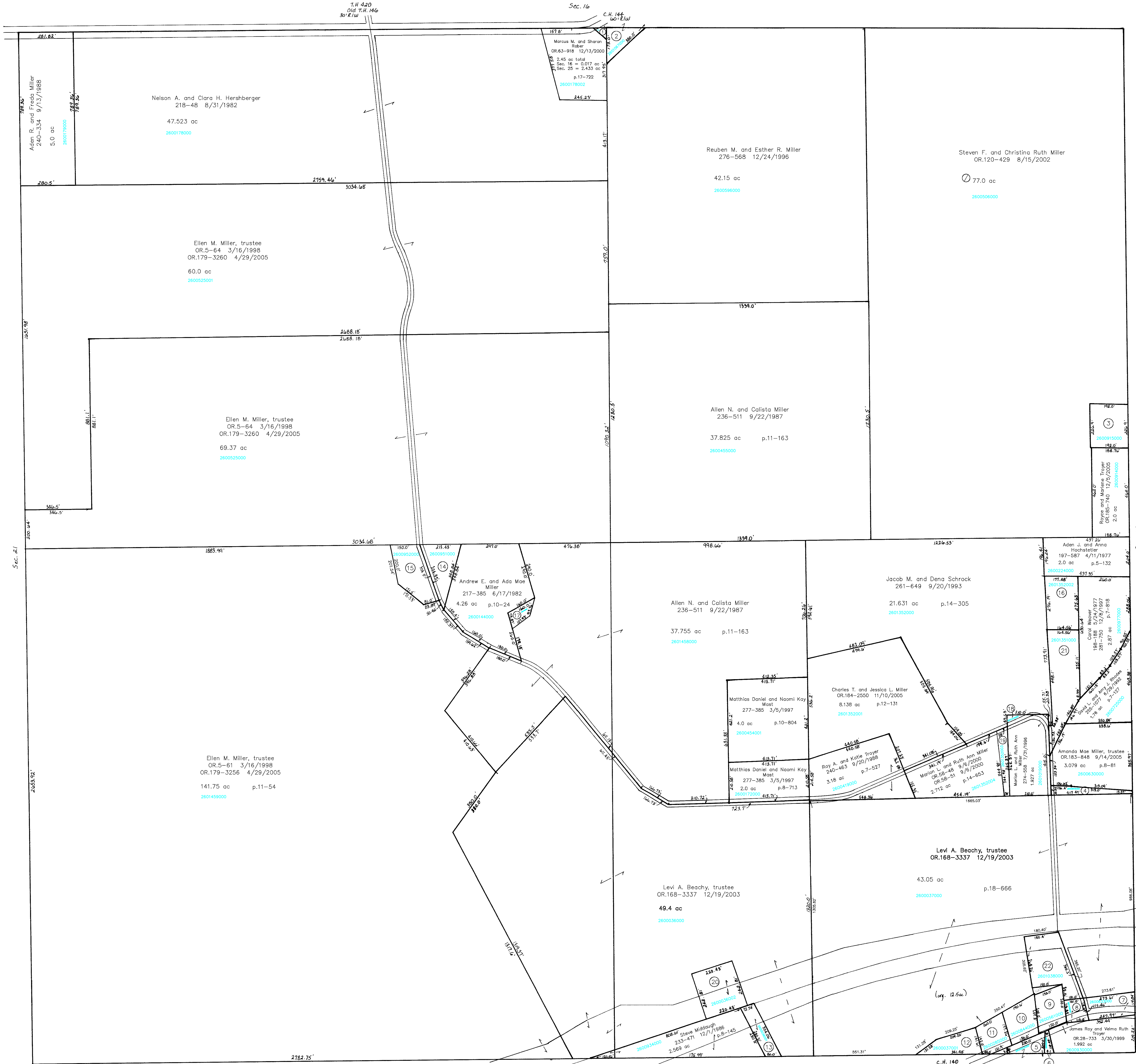


C.H. 144  
60' E/W



- 2600177001 (1) LING JOHN E. JR. AND SHARON E. 250-73 1/15/1992 0.044 ac
- 2601067000 (2) LING JOHN E. JR. AND SHARON E. 237-8 11/2/1987 0.35 ac
- 2600915000 (3) Royce and Marlene Troyer OR.185-740 12/5/2005 1.0 ac
- 2600816000 (4) SHELTER JOHN E. AND SARAH G., CO-TRUSTEES 272-875 4/2/1996 0.33 ac
- 2600522000 (5) D & L REAL ESTATE, LLC OR.0157-282 7/18/2003 0.32 ac
- 2600524000 (6) D & L REAL ESTATE, LLC OR.0157-282 7/18/2003 0.088 ac
- 2600633000 (7) SHARON CONSERVATIVE MENNONITE CHURCH, INC. OR.0071-700 4/9/2001 0.685 ac
- 2601039000 (8) YODER JONAS A. AND LORETTA L. 187-499 6/10/1974 0.28 ac
- 2600561000 (9) MILLER ROBIN J. AND JENNIFER L. 272-948 4/10/1996 0.689 ac
- 2600844000 (10) TROYER RANDY D. AND MARILYN L. 252-678 9/9/1991 0.73 ac
- 2600285000 (11) STUTZMAN B. EUGENE AND GLENDA S. OR.0088-568 9/25/2001 0.6 ac
- 2600037001 (12) STUTZMAN, DAVID LEE AND LEONA CO-TRUSTEES 236-134 8/4/1987 0.642 ac
- 2600036001 (13) MIDDAUGH STEVEN J. 244-843 9/29/1989 0.492 ac
- 2600951000 (14) WEAVER ELI M. AND MARTHA 202-718 7/24/1978 0.85 ac
- 2600952000 (15) WEAVER ELI M. AND MARTHA 202-178 7/24/1978 1.28 ac
- 2601352002 (16) MILLER RAYMOND R. AND LEAH A. OR.0173-1815 7/2/2004 1.082 ac
- 2601458001 (17) MILLER ANDREW E. AND ADA MAE 263-957 4/5/1994 0.216 ac
- 2601019001 (18) SCHROCK JACOB M. AND DENA 266-753 11/18/1994 0.073 ac
- 2601352003 (19) MILLER MARION L. AND RUTH ANN 274-558 7/31/1995 0.349 ac
- 2600036002 (20) BEACHY JERRY L. AND RACHEL M. 268-880 5/23/1995 2.229 ac
- 2601351000 (21) MILLER RAYMOND R. AND LEAH A. OR.0173-1815 7/2/2004 1.659 ac
- 2601038000 (22) Jones A. and Loretta L. Yoder 187-499 6/10/1974 1.46 ac

- S.R. 39 E/W varies see plans
- 2600952000 (15) WEAVER ELI M. AND MARTHA 202-178 7/24/1978 1.28 ac
- 2601352002 (16) MILLER RAYMOND R. AND LEAH A. OR.0173-1815 7/2/2004 1.082 ac
- 2601458001 (17) MILLER ANDREW E. AND ADA MAE 263-957 4/5/1994 0.216 ac
- 2601019001 (18) SCHROCK JACOB M. AND DENA 266-753 11/18/1994 0.073 ac
- 2601352003 (19) MILLER MARION L. AND RUTH ANN 274-558 7/31/1995 0.349 ac
- 2600036002 (20) BEACHY JERRY L. AND RACHEL M. 268-880 5/23/1995 2.229 ac
- 2601351000 (21) MILLER RAYMOND R. AND LEAH A. OR.0173-1815 7/2/2004 1.659 ac
- 2601038000 (22) Jones A. and Loretta L. Yoder 187-499 6/10/1974 1.46 ac

SCALE: 1" = 200'

Last Revision: 12/5/2005  
**T-9, R-4, Sec. 25**  
**Walnut Creek Twp.**  
 HOLMES COUNTY, OHIO

LET IT BE KNOWN, THIS MAP HAS BEEN PREPARED AS A REFERENCE GUIDE TO PROPERTY OWNERSHIP. WE BELIEVE THIS INFORMATION TO BE CORRECT AND CURRENT, HOWEVER, IT IS NOT INTENDED FOR ANY LEGAL USE, WHETHER IT BE IN SALES, TRANSFERS, TRADES, LEASES OF ANY TYPE, ETC., AND DO NOT ACCEPT RESPONSIBILITY FOR ERRORS OF ANY NATURE OR OMISSIONS CONTAINED HEREIN.

WC-19