

- 2600410000 ① BEACHY TWILA H. AND RUBY H.
OR.0053-398 6/8/2000
0.412 ac
- 2600129000 ② BEACHY TWILA H. AND RUBY H.
OR.0053-398 6/8/2000
0.268 ac
- 2600174000 ③ MILLER J. MARK AND MARTHA
263-959 4/5/1994
0.556 ac p.6-1
- 2600039000 ④ YODER DAVID H. AND ESTHER R.
233-410 11/20/1986
0.67 ac p.6-1
- 2601409000 ⑤ YODER DAVID H. AND ESTHER R.
233-410 11/20/1986
0.9605 ac p.10-325
- 2601410000 ⑥ YODER DAVID H. AND ESTHER R.
233-410 11/20/1986
0.3015 ac p.10-325

- 2600038000 ⑦ YODER DAVID H. AND ESTHER R.
233-410 11/20/1986
0.251 ac p.6-1
- 2600598000 ⑧ HOSTETLER DANIEL L. AND EDNA A.
256-819 8/6/1992
0.87 ac p.6-1
- 2600597000 ⑨ HOSTETLER DANIEL L. AND EDNA A.
256-819 8/6/1992
0.853 ac p.6-1
- 2600338000 ⑩ KING RALPH L. AND BRENDA K.
198-142 5/19/1977
238-973 8/6/1988
0.352 ac p.7-812
- 2601434004 ⑪ MILLER ROY N. AND ADA MAE
257-105 9/17/1992
1.0 ac p.14-40
- 2601302000 ⑫ MILLER IVAN L. AND MARY J.
OR.0016-11 9/4/1998
0.464 ac p.9-113

- 2600847000 ⑬ WENGER ADRIAN S. AND AMANDA E.
220-819 6/28/1983
0.643 ac
- 2600848000 ⑭ WENGER ADRIAN S. AND AMANDA E.
220-819 6/28/1983
0.78 ac p.2-88
- 2601025000 ⑮ WENGER MARVIN W. AND MIRIAM
265-581 8/17/1994
1.18 ac p.11-191
- 2600900001 ⑯ WENGER MARVIN W. AND MIRIAM
265-581 8/17/1994
0.002 ac p.11-191
- 2600900000 ⑰ WALNUT HILLS, INC.
OR.0015-75 8/20/1998
0.067 ac p.2-288

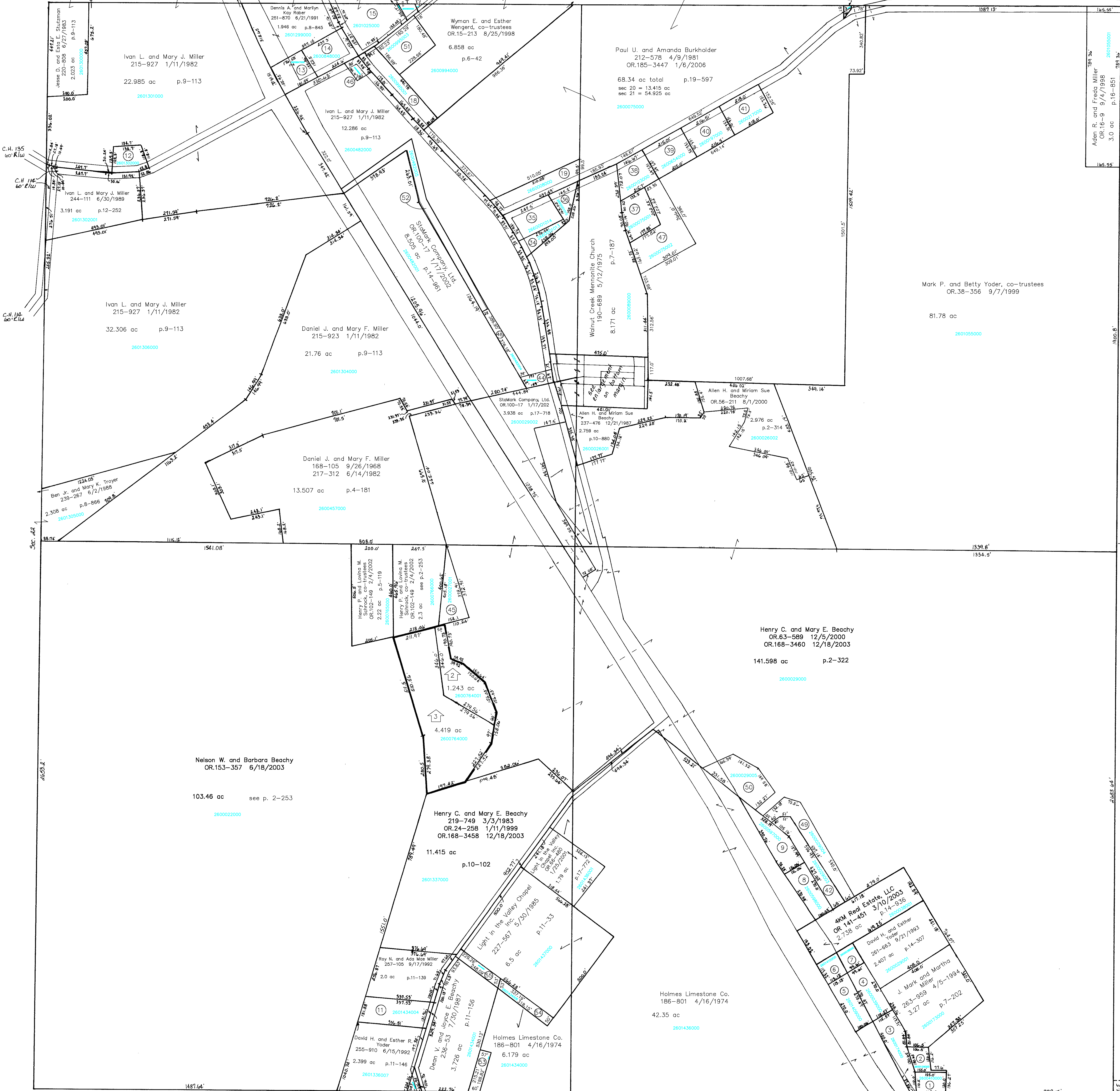
- 2600995001 ⑱ WEAVER JOHN R. AND ANNETTA J.
CO-TRUSTEES
OR.0007-419 4/17/1998
1.045 ac p.11-74
- 2600080000 ⑲ WALNUT CREEK MENNONITE CHURCH
190-689 5/12/1975
0.979 ac p.7-187
- 2601055002 ⑳ YODER MARK P. AND BETTY
CO-TRUSTEES
OR.0038-356 9/7/1999
0.04 ac
- 2600001000 ㉑ WALNUT CREEK MENNONITE CHURCH
190-689 5/12/1975
0.72 ac
- 2600001001 ㉒ WALNUT CREEK MENNONITE CHURCH
190-689 5/12/1975
0.124 ac

- 2660001002 ㉓ WALNUT CREEK MENNONITE CHURCH
190-689 5/12/1975
0.948 ac
- 2660001003 ㉔ WALNUT CREEK MENNONITE CHURCH
190-689 5/12/1975
0.125 ac
- 2660001004 ㉕ WALNUT CREEK MENNONITE CHURCH
190-689 5/12/1975
0.06 ac
- 2660001005 ㉖ WALNUT CREEK MENNONITE CHURCH
190-689 5/12/1975
0.04 ac
- 2660001006 ㉗ WALNUT CREEK MENNONITE CHURCH
190-689 5/12/1975
0.27 ac
- 2660001007 ㉘ WALNUT CREEK MENNONITE CHURCH
190-689 5/12/1975
0.124 ac

- 2660001008 ㉙ WALNUT CREEK MENNONITE CHURCH
190-689 5/12/1975
0.309 ac
- 2660001009 ㉚ WALNUT CREEK MENNONITE CHURCH
190-689 5/12/1975
0.23 ac
- 2660001010 ㉛ WALNUT CREEK MENNONITE CHURCH
190-689 5/12/1975
0.125 ac
- 2660001011 ㉜ WALNUT CREEK MENNONITE CHURCH
190-689 5/12/1975
0.066 ac
- 2660001012 ㉝ WALNUT CREEK MENNONITE CHURCH
190-689 5/12/1975
0.038 ac
- 2660001013 ㉞ WALNUT CREEK MENNONITE CHURCH
190-689 5/12/1975
0.125 ac

- 2660001014 ㉟ WALNUT CREEK MENNONITE CHURCH
190-689 5/12/1975
0.89 ac
- 2660001015 ㊱ WALNUT CREEK MENNONITE CHURCH
OR.0151-816 8/5/2003
0.32 ac
- 26600075001 ㊲ WENGER MARCUS L. AND REBECCA V.
OR.0151-816 8/5/2003
0.746 ac p.12-225
- 2660013000 ㊳ WENGER MARCUS L. AND REBECCA V.
OR.0151-816 8/5/2003
0.655 ac p.8-383
- 2660054000 ㊴ MARSHALL WILLIAM DENNIS AND NANCY L.
280-83 9/24/1997
0.772 ac p.8-384
- 2660197000 ㊵ TROYER WAYNE D. AND SHELLY R.
235-588 6/17/1987
0.769 ac p.8-385

- 26600217000 ㊶ HERSHBERGER MERLIN AND IRENE
205-43 2/27/1979
235-589 6/17/1987
0.766 ac p.3-586
- 2660029003 ㊷ HOSTETLER DANIEL L. AND EDNA A.
OR.0169-1076 1/7/2004
0.134 ac p.16-186
- 2660094001 ㊸ WENGER MARCUS L. AND REBECCA V.
OR.0169-1076 1/7/2004
0.011 ac p.16-345
- 26600482002 ㊹ STAMARK COMPANY, LTD.
OR.0100-17 1/17/2002
0.235 ac p.16-519
- 2660027001 ㊺ SCHROCK HENRY P. AND LOVINA M.
CO-TRUSTEES
OR.0102-149 2/4/2002
0.66 ac p.2-314



- 2600482003 ㊻ THE BOARD OF HOLMES COUNTY COMMISSIONERS
OR.0097-724 12/27/2001
0.181 ac p.18-165
- 2600075002 ㊼ WENGER MARCUS L. AND REBECCA V.
OR.0151-816 8/5/2003
1.528 ac p.18-149
- 2600482004 ㊽ STAMARK COMPANY, LTD.
OR.0100-17 1/17/2002
0.292 ac p.18-180
- 2600029004 ㊾ HOSTETLER DANIEL L. AND EDNA
OR.0100-17 1/17/2002
1.074 ac p.18-251
- 2600029005 ㊿ HOLMES RENTAL STATION, INC.
OR.0112-425 5/10/2002
1.091 ac p.18-280
- 2600995003 ① WENGER BRIAN L. AND HANNAH O.
OR.0176-1360 11/15/2004
0.986 ac p.19-245
- 2600482005 ② STAMARK COMPANY, LTD.
OR.0176-2762 12/2/2004
0.872 ac p.19-284
- 2601434007 ③ Dean V. and Joyce E. Beachy
OR.183-1411 9/20/2005
0.274 ac p.19-502
- 2601434008 ④ Light in the Valley Chapel, Inc.
OR.183-1408 9/20/2005
0.377 ac p.19-502
- 2601434005 ⑤ Light in the Valley Chapel, Inc.
OR.183-1405 9/20/2005
0.274 ac p.19-502

- 2600029000 ⑥ Henry C. and Mary E. Beachy
OR.63-589 12/5/2000
OR.168-3460 12/18/2003
141.598 ac p.2-322
- 2600764000 ⑦ BEACHY DAVID W.
OR.0108-569 3/29/2002
4.419 ac
- 2600764001 ⑧ SCHROCK ROBERT MICHAEL AND SUE D.
OR.0107-807 3/21/2002
1.243 ac
- 2601330000 ⑨ Light in the Valley Chapel
227-987 5/20/1985
6.5 ac
- 2601330001 ⑩ Light in the Valley Chapel
227-987 5/20/1985
1.79 ac
- 2601330002 ⑪ Light in the Valley Chapel
227-987 5/20/1985
1.79 ac
- 2601330003 ⑫ Light in the Valley Chapel
227-987 5/20/1985
1.79 ac
- 2601330004 ⑬ Light in the Valley Chapel
227-987 5/20/1985
1.79 ac
- 2601330005 ⑭ Light in the Valley Chapel
227-987 5/20/1985
1.79 ac
- 2601330006 ⑮ Light in the Valley Chapel
227-987 5/20/1985
1.79 ac
- 2601330007 ⑯ Light in the Valley Chapel
227-987 5/20/1985
1.79 ac
- 2601330008 ⑰ Light in the Valley Chapel
227-987 5/20/1985
1.79 ac
- 2601330009 ⑱ Light in the Valley Chapel
227-987 5/20/1985
1.79 ac
- 2601330010 ⑲ Light in the Valley Chapel
227-987 5/20/1985
1.79 ac
- 2601330011 ⑳ Light in the Valley Chapel
227-987 5/20/1985
1.79 ac
- 2601330012 ㉑ Light in the Valley Chapel
227-987 5/20/1985
1.79 ac
- 2601330013 ㉒ Light in the Valley Chapel
227-987 5/20/1985
1.79 ac
- 2601330014 ㉓ Light in the Valley Chapel
227-987 5/20/1985
1.79 ac
- 2601330015 ㉔ Light in the Valley Chapel
227-987 5/20/1985
1.79 ac
- 2601330016 ㉕ Light in the Valley Chapel
227-987 5/20/1985
1.79 ac
- 2601330017 ㉖ Light in the Valley Chapel
227-987 5/20/1985
1.79 ac
- 2601330018 ㉗ Light in the Valley Chapel
227-987 5/20/1985
1.79 ac
- 2601330019 ㉘ Light in the Valley Chapel
227-987 5/20/1985
1.79 ac
- 2601330020 ㉙ Light in the Valley Chapel
227-987 5/20/1985
1.79 ac
- 2601330021 ㉚ Light in the Valley Chapel
227-987 5/20/1985
1.79 ac
- 2601330022 ㉛ Light in the Valley Chapel
227-987 5/20/1985
1.79 ac
- 2601330023 ㉜ Light in the Valley Chapel
227-987 5/20/1985
1.79 ac
- 2601330024 ㉝ Light in the Valley Chapel
227-987 5/20/1985
1.79 ac
- 2601330025 ㉞ Light in the Valley Chapel
227-987 5/20/1985
1.79 ac
- 2601330026 ㉟ Light in the Valley Chapel
227-987 5/20/1985
1.79 ac
- 2601330027 ㊱ Light in the Valley Chapel
227-987 5/20/1985
1.79 ac
- 2601330028 ㊲ Light in the Valley Chapel
227-987 5/20/1985
1.79 ac
- 2601330029 ㊳ Light in the Valley Chapel
227-987 5/20/1985
1.79 ac
- 2601330030 ㊴ Light in the Valley Chapel
227-987 5/20/1985
1.79 ac
- 2601330031 ㊵ Light in the Valley Chapel
227-987 5/20/1985
1.79 ac
- 2601330032 ㊶ Light in the Valley Chapel
227-987 5/20/1985
1.79 ac
- 2601330033 ㊷ Light in the Valley Chapel
227-987 5/20/1985
1.79 ac
- 2601330034 ㊸ Light in the Valley Chapel
227-987 5/20/1985
1.79 ac
- 2601330035 ㊹ Light in the Valley Chapel
227-987 5/20/1985
1.79 ac
- 2601330036 ㊺ Light in the Valley Chapel
227-987 5/20/1985
1.79 ac
- 2601330037 ㊻ Light in the Valley Chapel
227-987 5/20/1985
1.79 ac
- 2601330038 ㊼ Light in the Valley Chapel
227-987 5/20/1985
1.79 ac
- 2601330039 ㊽ Light in the Valley Chapel
227-987 5/20/1985
1.79 ac
- 2601330040 ㊾ Light in the Valley Chapel
227-987 5/20/1985
1.79 ac
- 2601330041 ㊿ Light in the Valley Chapel
227-987 5/20/1985
1.79 ac
- 2601330042 ① Light in the Valley Chapel
227-987 5/20/1985
1.79 ac
- 2601330043 ② Light in the Valley Chapel
227-987 5/20/1985
1.79 ac
- 2601330044 ③ Light in the Valley Chapel
227-987 5/20/1985
1.79 ac
- 2601330045 ④ Light in the Valley Chapel
227-987 5/20/1985
1.79 ac
- 2601330046 ⑤ Light in the Valley Chapel
227-987 5/20/1985
1.79 ac
- 2601330047 ⑥ Light in the Valley Chapel
227-987 5/20/1985
1.79 ac
- 2601330048 ⑦ Light in the Valley Chapel
227-987 5/20/1985
1.79 ac
- 2601330049 ⑧ Light in the Valley Chapel
227-987 5/20/1985
1.79 ac
- 2601330050 ⑨ Light in the Valley Chapel
227-987 5/20/1985
1.79 ac



LET IT BE KNOWN, THIS MAP HAS BEEN PREPARED AS A REFERENCE GUIDE TO PROPERTY OWNERSHIP. WE BELIEVE THIS INFORMATION TO BE CORRECT AND CURRENT, HOWEVER, IT IS NOT INTENDED FOR ANY LEGAL USE, WHETHER IT BE IN SALES, TRANSFERS, TRADES, LEASES OF ANY TYPE, ETC., AND DO NOT ACCEPT RESPONSIBILITY FOR ERRORS OF ANY NATURE OR OMISSIONS CONTAINED HEREIN.

SCALE: 1" = 200'

T-9, R-5, Sec. 21
Walnut Creek Twp.
HOLMES COUNTY, OHIO
Last Revision: 1/6/2006

WC-13