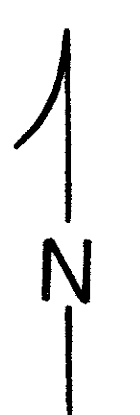


↑ Schrock Subdivision Replat of Lot 1
Plat 2-345 Platted 5/16/2002 WC-13A

SCALE: 1" = 200'



LET IT BE KNOWN, THIS MAP HAS BEEN PREPARED AS A REFERENCE GUIDE TO PROPERTY OWNERSHIP. WE BELIEVE THIS INFORMATION TO BE CORRECT AND CURRENT. HOWEVER, IT IS NOT INTENDED FOR ANY LEGAL USE, WHETHER IT BE IN SALES, TRANSFERS, TRADES, LEASES OF ANY TYPE, ETC., AND DO NOT ACCEPT RESPONSIBILITY FOR ERRORS OF ANY NATURE OR OMISSIONS CONTAINED HEREIN.

T-9, R-5, Sec. 21
Walnut Creek Twp.

HOLMES COUNTY, OHIO

Last Revision: 12/2/2004

WC-13