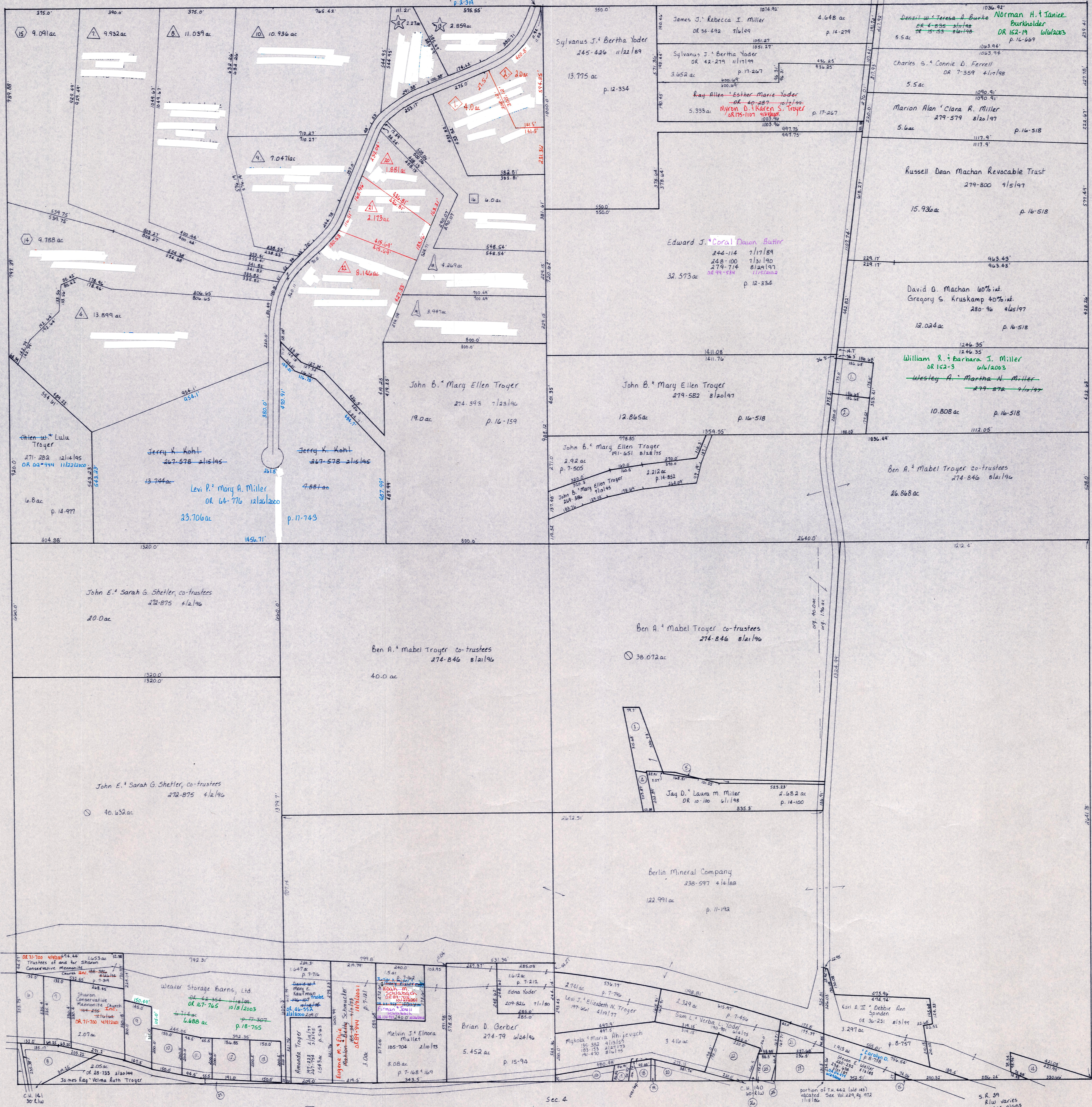


Commissioners of Holmes County, OH
 Jerry K. Kohl 3.299 ac
 OR 14-815 11/11/00 TR 447
 Blackhawk Road (private)
 p. 2-210 4-1-199
 p. 2-310 4-1-199
 Sec. 17

T.H. 442
 D14 T.H. 143
 401 E.W.



Sec. 25

Tuscarawas County

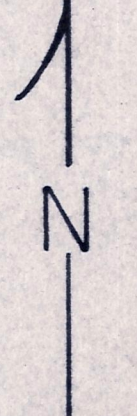
S.E. 39
 E.W. varies
 see plans

C.H. 140
 W. E.W.

C.H. 141
 S. E.W.

- Blackhawk Subdivision No. 1
 Plat 2-265 PLATTED 11/11/96 WC-25A
- Replat of Lots 2, 3 WC-25A
 Plat 19-204 PLATTED 9/15/2003
- Replat of Lot 11 in Blackhawk Subdivision No. 1
 Plat 2-272 PLATTED 8/29/97 WC-25A
- Replat of Lots 1 of 6 in Blackhawk Subdivision No. 1
 Plat 2-271 PLATTED 8/29/97 WC-25A
- Blackhawk Subdivision No. 1 Replat of Lot 17
 Plat 2-241 PLATTED 11/2/99 WC-25A
- Replat of Lot 1 in Blackhawk Subdivision No. 1
 Plat 2-274 PLATTED 10/6/97 WC-25A
- B-1 Subdivision No. 1
 Plat 2-338 PLATTED 2/11/2001 WC-25A

SCALE: 1" = 200'



T-9, R-4, Sec. 24
 Walnut Creek Twp.
 HOLMES COUNTY, OHIO

WC-25

LET IT BE KNOWN, THIS MAP HAS BEEN PREPARED AS A REFERENCE GUIDE TO PROPERTY OWNERSHIP. WE BELIEVE THIS INFORMATION TO BE CORRECT AND CURRENT, HOWEVER, IT IS NOT INTENDED FOR ANY LEGAL USE, WHETHER IT BE IN SALES, TRANSFERS, TRADES, LEASES OF ANY TYPE, ETC., AND DO NOT ACCEPT RESPONSIBILITY FOR ERRORS OF ANY NATURE OR OMISSIONS CONTAINED HEREIN.