

T.H. 401
D.H. 111
60' R/W

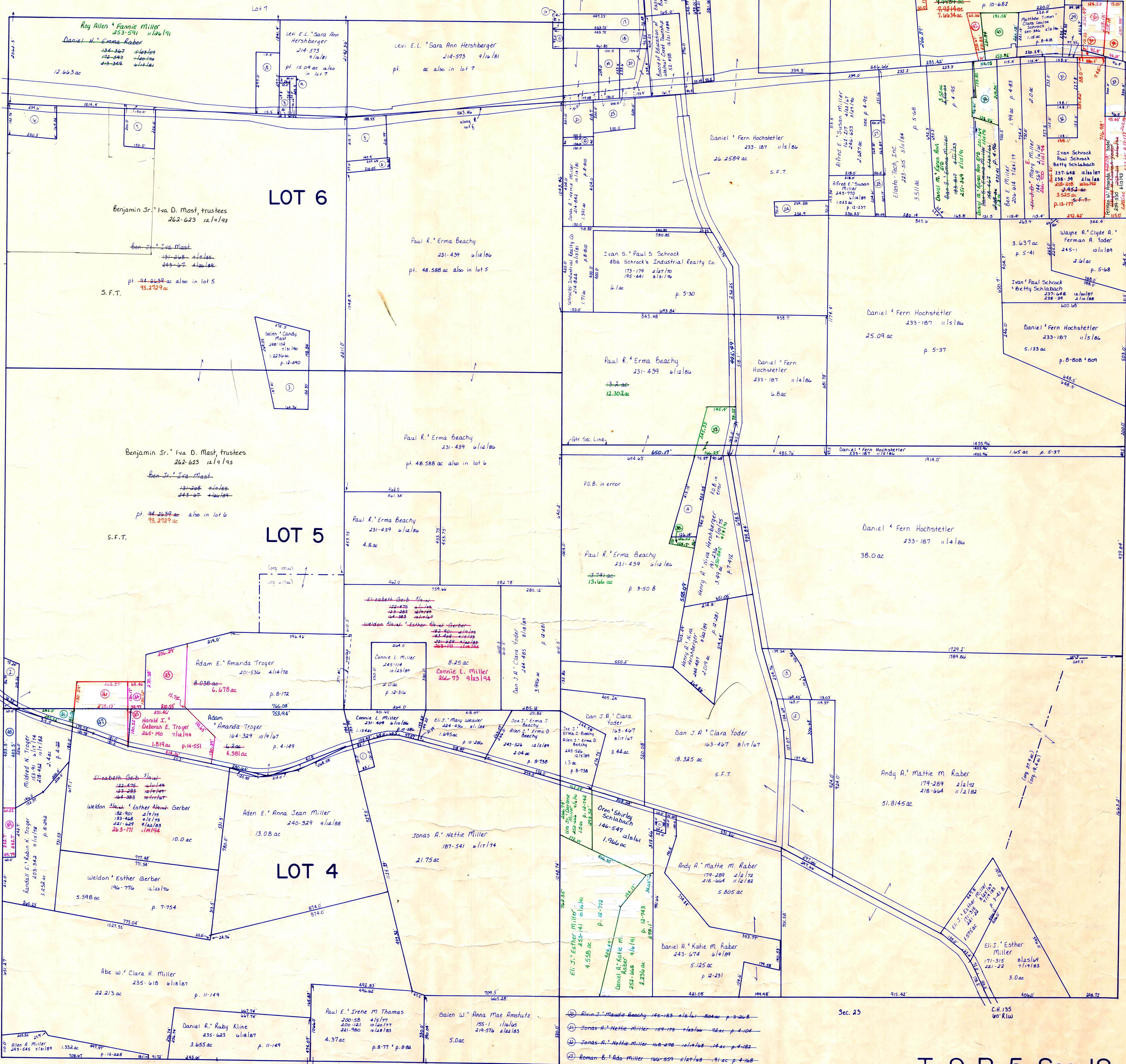
Sec. 13

S.R. 39
R/W varies
see plans

Berlin Township

C.H. 135
40' R/W

① Aden E. Anna Jean Miller 240-329 4/12/88 25.0 ac plot in file
② Jacob E. Mary Chapp 248-50 1/16/89 30.0 ac p. 10-105
③ Galen L. Candy Mast 246-108 1/16/89 79.0 ac p. 12-940
④ Edward R. Ruth Kline 202-248 1/16/88 280-25 1/13/83 272 ac p. 8-230
⑤ Edward R. Ruth Kline 109-53 12/1/84 280-25 1/13/83 74 ac p. 7-378
⑥ David D. Anna Troyer 255-495 1/16/89 67 ac p. 7-160
⑦ Moses R. Carol Ann Weaver 184-60 1/16/89 69 ac p. 4-148
⑧ Betty R. Miller 234-40 1/16/87 174 ac p. 5-200
⑨ Betty R. Miller 234-26 1/16/87 174 ac p. 5-200
⑩ Betty R. Miller 234-26 1/16/87 174 ac



- Lot 5
- ⑪ Bren Shirley Schlabach 146-647 1/16/89 14 ac
 - ⑫ Jacob J. Marie Miller 242-826 1/16/89 93 ac p. 12-774
 - ⑬ Jacob J. Marie Miller 236-589 1/16/89 91.05 ac p. 10-825
 - ⑭ Henry A. Nira Herschberger 228-61 1/16/88 249 ac p. 10-482
 - ⑮ Alvin J. Maude Beachy 214-507 1/16/88 104 ac p. 7-204
 - ⑯ Alvin J. Maude Beachy 214-507 1/16/88 104 ac p. 7-204
 - ⑰ Alvin J. Maude Beachy 214-507 1/16/88 104 ac p. 7-204
 - ⑱ Alvin J. Maude Beachy 214-507 1/16/88 104 ac p. 7-204
 - ⑲ Alvin J. Maude Beachy 214-507 1/16/88 104 ac p. 7-204
 - ⑳ Alvin J. Maude Beachy 214-507 1/16/88 104 ac p. 7-204

- ㉑ Alvin J. Maude Beachy 214-507 1/16/88 104 ac p. 7-204
- ㉒ Alvin J. Maude Beachy 214-507 1/16/88 104 ac p. 7-204
- ㉓ Alvin J. Maude Beachy 214-507 1/16/88 104 ac p. 7-204
- ㉔ Alvin J. Maude Beachy 214-507 1/16/88 104 ac p. 7-204
- ㉕ Alvin J. Maude Beachy 214-507 1/16/88 104 ac p. 7-204
- ㉖ Alvin J. Maude Beachy 214-507 1/16/88 104 ac p. 7-204
- ㉗ Alvin J. Maude Beachy 214-507 1/16/88 104 ac p. 7-204
- ㉘ Alvin J. Maude Beachy 214-507 1/16/88 104 ac p. 7-204
- ㉙ Alvin J. Maude Beachy 214-507 1/16/88 104 ac p. 7-204
- ㉚ Alvin J. Maude Beachy 214-507 1/16/88 104 ac p. 7-204
- ㉛ Alvin J. Maude Beachy 214-507 1/16/88 104 ac p. 7-204
- ㉜ Alvin J. Maude Beachy 214-507 1/16/88 104 ac p. 7-204
- ㉝ Alvin J. Maude Beachy 214-507 1/16/88 104 ac p. 7-204
- ㉞ Alvin J. Maude Beachy 214-507 1/16/88 104 ac p. 7-204
- ㉟ Alvin J. Maude Beachy 214-507 1/16/88 104 ac p. 7-204
- ㊱ Alvin J. Maude Beachy 214-507 1/16/88 104 ac p. 7-204
- ㊲ Alvin J. Maude Beachy 214-507 1/16/88 104 ac p. 7-204
- ㊳ Alvin J. Maude Beachy 214-507 1/16/88 104 ac p. 7-204
- ㊴ Alvin J. Maude Beachy 214-507 1/16/88 104 ac p. 7-204
- ㊵ Alvin J. Maude Beachy 214-507 1/16/88 104 ac p. 7-204
- ㊶ Alvin J. Maude Beachy 214-507 1/16/88 104 ac p. 7-204
- ㊷ Alvin J. Maude Beachy 214-507 1/16/88 104 ac p. 7-204
- ㊸ Alvin J. Maude Beachy 214-507 1/16/88 104 ac p. 7-204
- ㊹ Alvin J. Maude Beachy 214-507 1/16/88 104 ac p. 7-204
- ㊺ Alvin J. Maude Beachy 214-507 1/16/88 104 ac p. 7-204
- ㊻ Alvin J. Maude Beachy 214-507 1/16/88 104 ac p. 7-204
- ㊼ Alvin J. Maude Beachy 214-507 1/16/88 104 ac p. 7-204
- ㊽ Alvin J. Maude Beachy 214-507 1/16/88 104 ac p. 7-204
- ㊾ Alvin J. Maude Beachy 214-507 1/16/88 104 ac p. 7-204
- ㊿ Alvin J. Maude Beachy 214-507 1/16/88 104 ac p. 7-204

T-9, R-5, Sec. 18
3rd. qtr. lots 4, 5, 6
Walnut Creek Twp.
HOLMES COUNTY, OHIO

1
N
SCALE: 1" = 200'

PRINTED
3/15/91

WC-2