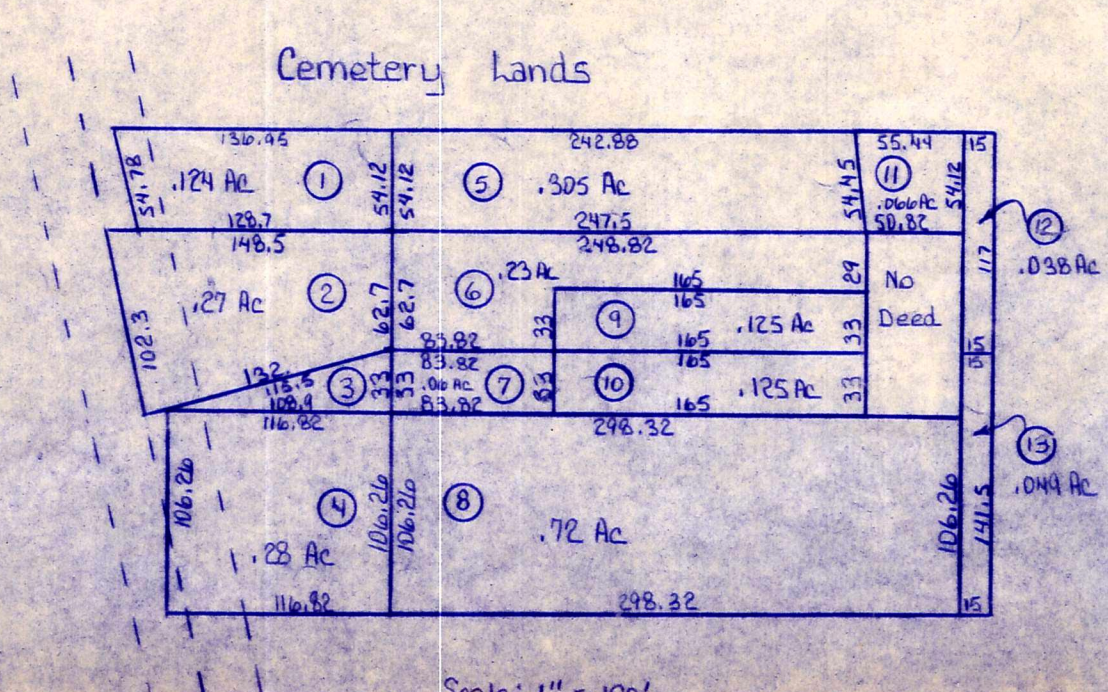


- 1. 9-29-26 96-310 .124 A.M. Church of Walnutcreek
- 2. 5-6-25 190-633 .27 Amish Meeting at Walnutcreek
- 3. 7-22-33 190-635 .04 Amish Meeting at Walnutcreek
- 4. 1-19-14 81-186 .28 Directors of Amish Meeting at W.C.
- 5. 9-29-26 96-310 .305 A.M. Church of Walnutcreek
- 6. 5-6-25 190-633 .23 Amish Meeting at Walnutcreek
- 7. 7-22-33 190-635 .06 Amish Meeting at Walnutcreek
- 8. 1-19-14 81-186 .72 Directors of Amish Meeting at W.C.
- 9. 5-27-68 50-493 .125 Trustees of Amish Church
- 10. 5-27-68 50-494 .125 Trustees of Amish Church
- 11. 7-27-27 40-567 .066 A.M. Church
- 12. 11-20-49 121-447 .038 Walnutcreek A.M. Church
- 13. 11-20-49 121-448 .049 Walnutcreek A.M. Church
- 14. 5-26-63 25-346-97 .81 Trustes of Walnutcreek Amish Church
- 15. 1-19-14 78-339 .125 Amish Mennonite Church at W.C.
- 16. 3-26-21 87-170 .32 Trustees of Amish Mennonite Church
- 17. Adrian S. Amanda E. Wengert 220-894 1/4 Sec. 21 .643 ac
- 18. Adrian S. Amanda E. Wengert 220-894 1/4 Sec. 21 .78 ac
- 19. David W. Esther R. Yoder 233-740 1/4 Sec. 21 .845 ac 2/10-23
- 20. David W. Esther R. Yoder 233-740 1/4 Sec. 21 .845 ac 2/10-23
- 21. Steve Edith Engbreton 258-995 1/4 Sec. 21 .002 ac p. 11-11
- 22. Leona Yoder 1/4
- 23. Marion L. Ruth Ann Miller 1/4 244-814 1/4 Sec. 21 .655 ac p. 8-303
- 24. David J. Emma Yoder 215-797 1/4 Sec. 21 .464 ac p. 5-915-9-13
- 25. Marion L. Ruth Ann Miller 1/4 244-814 1/4 Sec. 21 .655 ac p. 8-303



T-9, R-5, Sec. 21  
 WALNUTCREEK TWP.  
 SCALE 1" = 200'

LET IT BE KNOWN, THIS MAP HAS BEEN PREPARED AS A REFERENCE GUIDE TO PROPERTY OWNERSHIP. WE BELIEVE THIS INFORMATION TO BE CORRECT AND CURRENT, HOWEVER, IT IS NOT INTENDED FOR ANY LEGAL USE, WHETHER IT BE IN SALES, TRANSFERS, TRAILS, LEASES OF ANY TYPE, ETC., AND DO NOT ACCEPT RESPONSIBILITY FOR ERRORS OF ANY NATURE OR OMISSIONS CONTAINED HEREIN.

