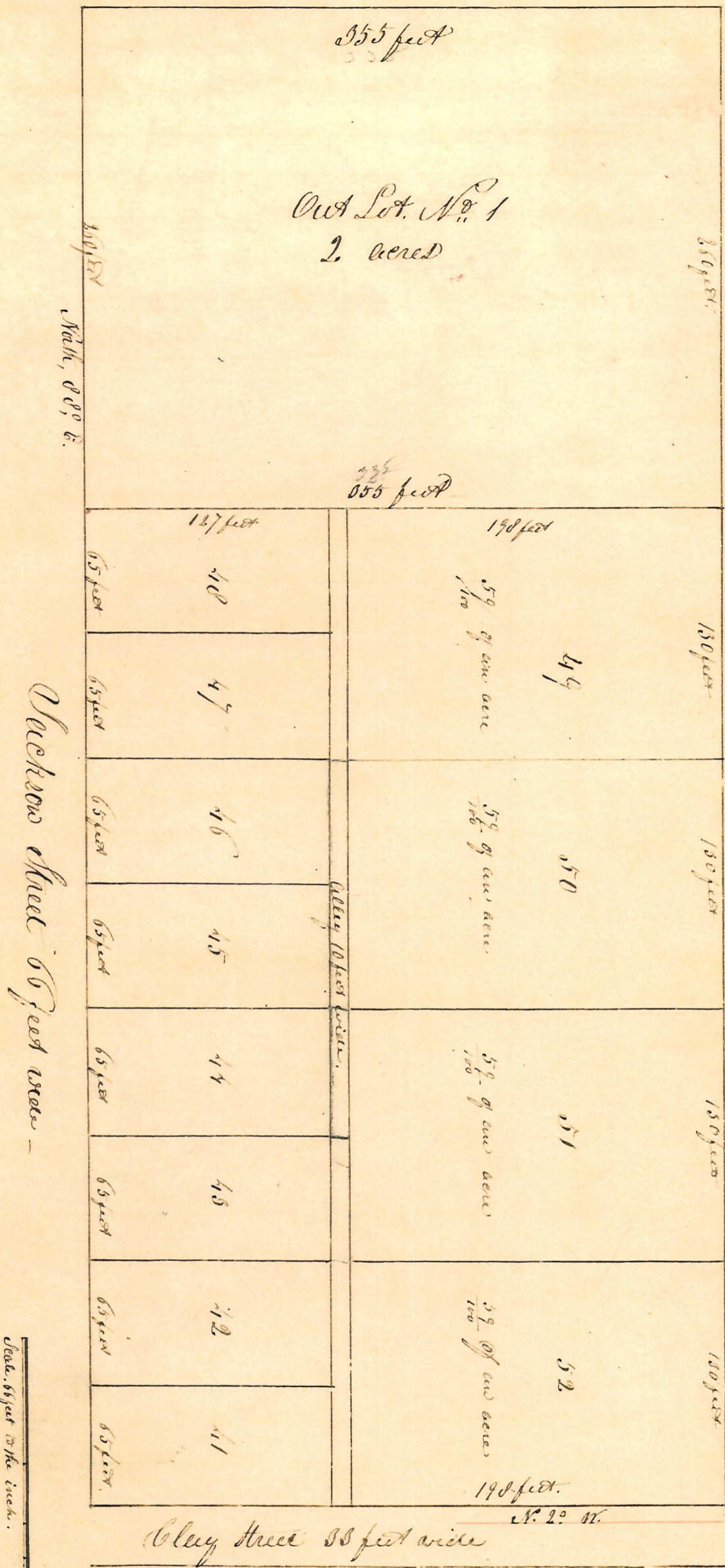


Plect of the first Addition to the Town of Middletown -



355  
127  
198

I do hereby certify the above to be a correct plect of in. and out Lots in the first addition of Lots to the town of Middletown. The above Lots are situated on the South East corner of Section two, in township fourteen of Range twelve immediately west of the N. W. part of the original plect of said town. Holmes County Ohio. Size of the Lots, Streets, alleys &c. are as above marked, in feet: the courses variation two degrees. A Stone 6 inches in diameter and 13 inches long planted at the South West corner of in lot 48 and at the S. E. of out Lot No. 1. for a Standard corner to make future surveys from George Painter, Proprietor of the above -  
 Surveyed Nov. 20. 1834  
 Samuel Robinson Co. Surveyor H. C. O.