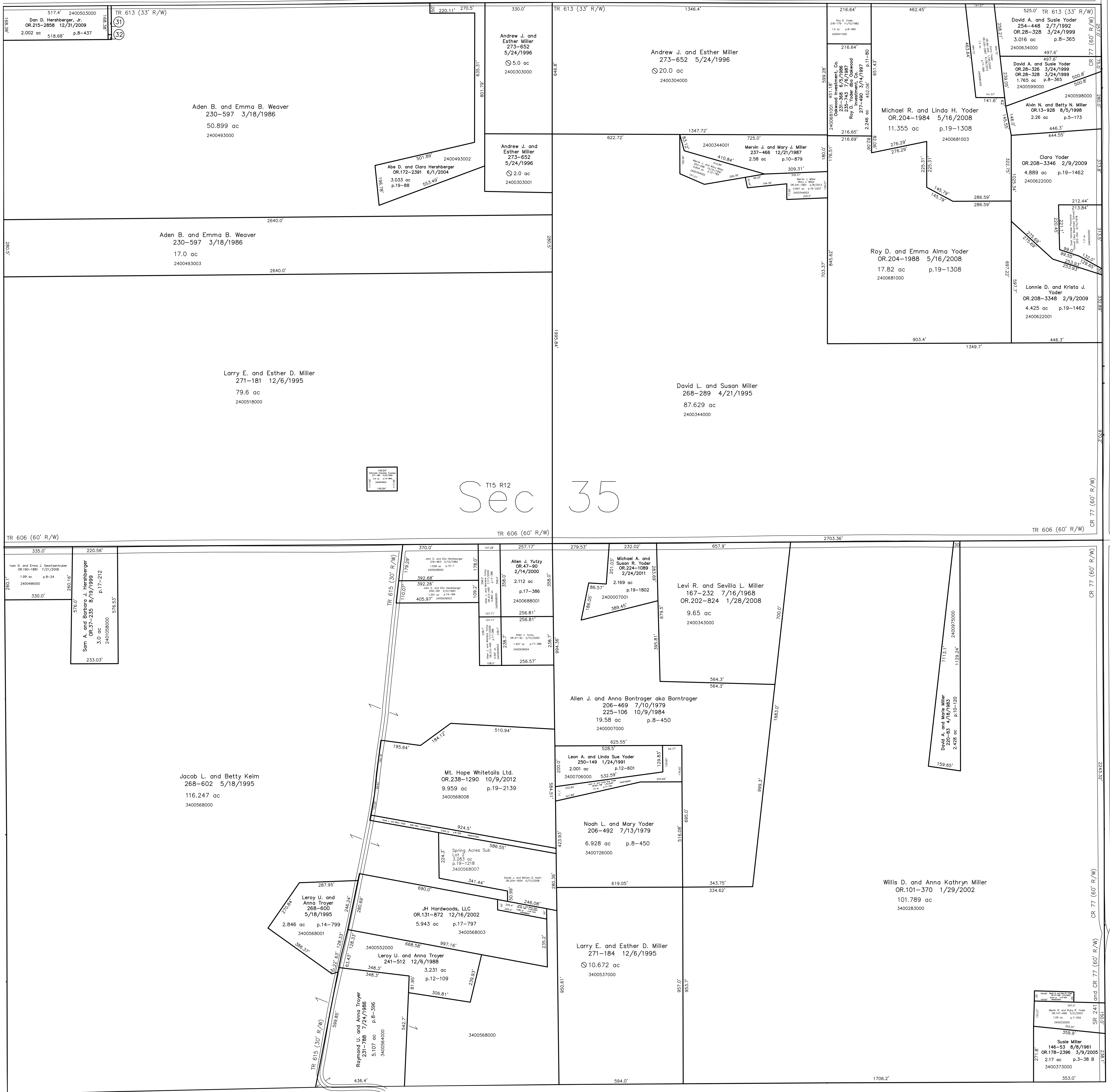


2400493001 (31) Dan D. Hershberger, Jr.  
OR.215-2858 12/31/2009  
0.556 ac p.18-750

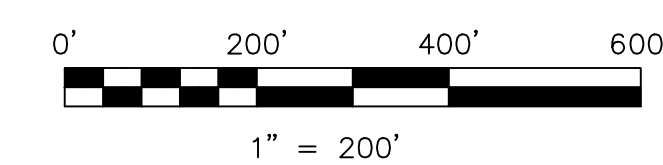
2400493004 (32) Dan D. Hershberger, Jr.  
OR.215-2858 12/31/2009  
0.01 ac p.19-1544



T15, R12, Sec.34 SC-25

T15, R12, Sec.36 SC-34

Spring Acres Subdivision Replat  
plat 19-1218 - platted 12/31/2007



LET IT BE KNOWN, THIS MAP HAS BEEN PREPARED AS A REFERENCE  
GUIDE TO PROPERTY OWNERSHIP. WE BELIEVE THIS INFORMATION TO  
BE CORRECT AND CURRENT. HOWEVER IT IS NOT INTENDED FOR ANY  
LEGAL USE, WHETHER IT BE IN SALES, TRANSFERS, TRADES, LEASES  
OF ANY TYPE, ETC., AND DO NOT ACCEPT RESPONSIBILITY FOR  
ERRORS OF ANY NATURE OR OMISSIONS CONTAINED HEREIN.

new survey required  
for next transfer

Last Revision: 2/8/2013  
**T-15, R-12, Sec.35**  
**Salt Creek Twp.**  
**Holmes County, Ohio**

# SC-29

