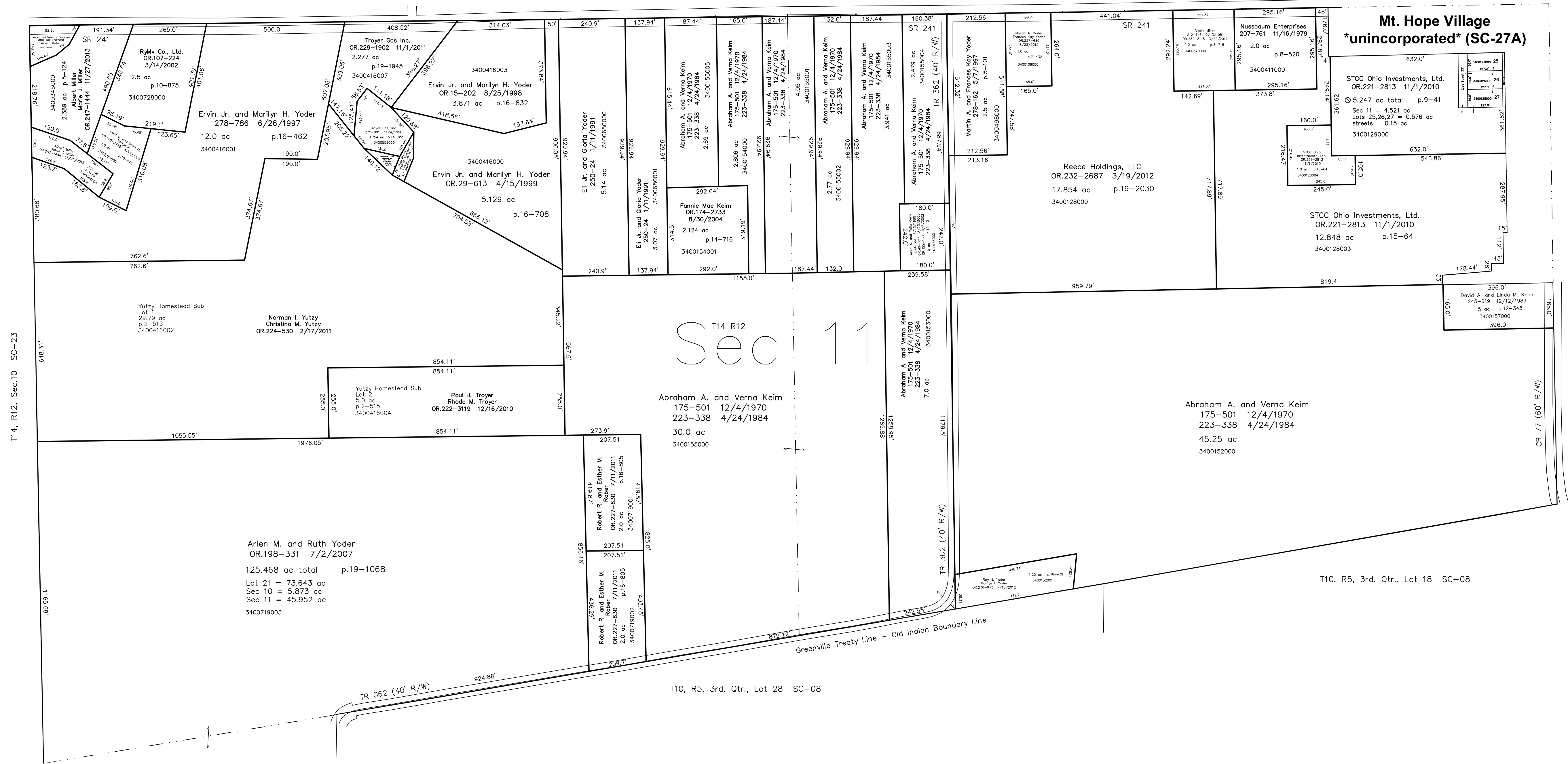


T14, R12, Sec.2 SC-28



T14, R12, Sec.10 SC-23

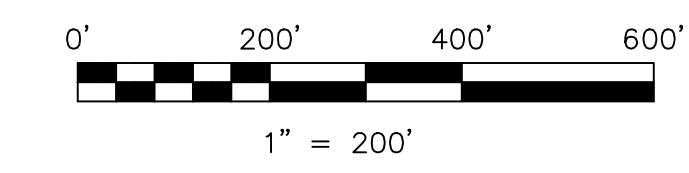
T14, R12, Sec.12 SC-32

T10, R5, 3rd. Qtr., Lot 21 SC-06

T10, R5, 3rd. Qtr., Lot 28 SC-08

T10, R5, 3rd. Qtr., Lot 18 SC-08

Yutz Homestead Subdivision
Plat 2-515 Platted 4/5/2012



LET IT BE KNOWN, THIS MAP HAS BEEN PREPARED AS A REFERENCE GUIDE TO PROPERTY OWNERSHIP. WE BELIEVE THIS INFORMATION TO BE CORRECT AND CURRENT. HOWEVER IT IS NOT INTENDED FOR ANY LEGAL USE, WHETHER IT BE IN SALES, TRANSFERS, TRADES, LEASES OF ANY TYPE, ETC., AND DO NOT ACCEPT RESPONSIBILITY FOR ERRORS OF ANY NATURE OR OMISSIONS CONTAINED HEREIN.

new survey required for next transfer

Last Revision: 11/27/2013

T-14, R-12, Sec.11
Salt Creek Twp.
Holmes County, Ohio

SC-27

