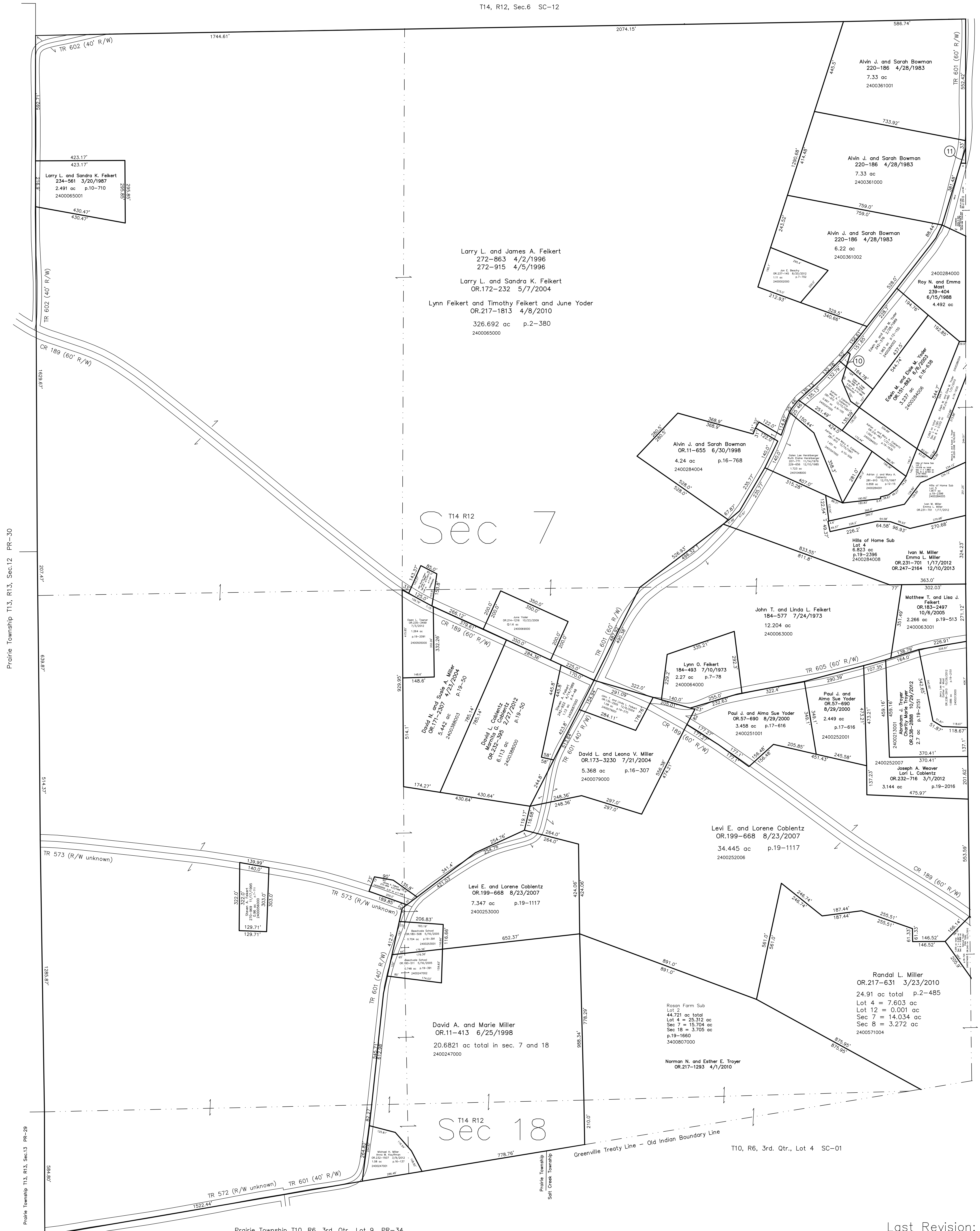


2400284003 (10) Adrian J. Coblenz and Mary A. Coblenz
281-910 12/15/1997
0.039 ac p.14-585

2400285000 (11) Roy N. Mast and Emma Mast
239-404 6/15/1988
0.233 ac S.F.T.



Prairie Township T13, R13, Sec.12 PR-30

Prairie Township T13, R13, Sec.13 PR-29

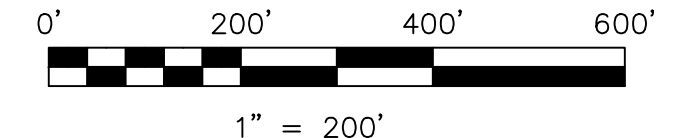
Prairie Township T10, R6, 3rd. Qtr., Lot 9 PR-34

T14, R12, Sec.8 SC-15

Hills of Home Subdivision
Plat 19-1653 Platted 3/3/2010

Hills of Home Subdivision Replat of Lots 1 & 2
Plat 19-2396 Platted 12/26/2013

Roson Farm Subdivision
Plat 19-1660 Platted 3/24/2010



LET IT BE KNOWN, THIS MAP HAS BEEN PREPARED AS A REFERENCE
GUIDE TO PROPERTY OWNERSHIP. WE BELIEVE THIS INFORMATION TO
BE CORRECT AND CURRENT, HOWEVER IT IS NOT INTENDED FOR ANY
LEGAL USE, WHETHER IT BE IN SALES, TRANSFERS, TRUSTS, LEASES
OF ANY TYPE, ETC., AND DO NOT ACCEPT RESPONSIBILITY FOR
ERRORS OF ANY NATURE OR OMISSIONS CONTAINED HEREIN.

new survey required
for next transfer

Last Revision: 12/26/2013
T-14, R-12, Sec.7,18
Salt Creek Twp.
Holmes County, Ohio

SC-11