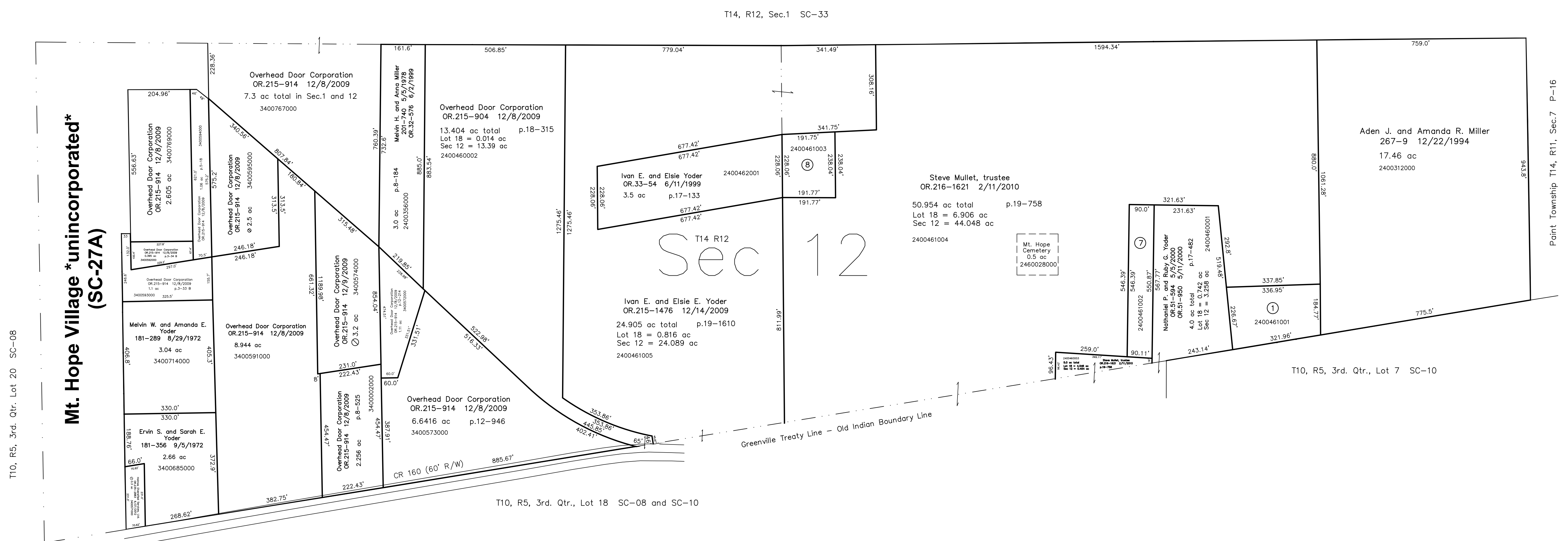


2400461001 ① Joseph A. Miller
OR.172-2499 6/1/2004
1.551 ac p.14-678

2400461002 ⑦ Nathaniel P. and Ruby C. Yoder
OR.116-799 7/26/2002
1.134 ac p.18-341

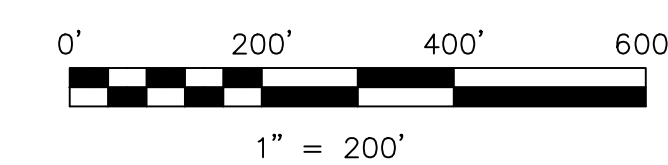
2400461003 ⑧ Ivan E. and Elsie Yoder
OR.174-1503 8/12/2004
1.026 ac p.19-155



Last Revision: 6/27/2012

T-14, R-12, Sec.12
Salt Creek Twp.
Holmes County, Ohio

SC-32



LET IT BE KNOWN, THIS MAP HAS BEEN PREPARED AS A REFERENCE GUIDE TO PROPERTY OWNERSHIP. WE BELIEVE THIS INFORMATION TO BE CORRECT AND CURRENT. HOWEVER IT IS NOT INTENDED FOR ANY LEGAL USE, WHETHER IT BE IN SALES, TRANSFERS, TRADES, LEASES OF ANY TYPE, ETC., AND DO NOT ACCEPT RESPONSIBILITY FOR ERRORS OF ANY NATURE OR OMISSIONS CONTAINED HEREIN.

⊙ new survey required for next transfer