

- 2400983000 ① Roman A. and Mattie Miller  
261-967 10/19/1993  
1.228 ac p.10-144
- 2400984001 ② Roman A. and Mattie Miller  
261-967 10/19/1993  
0.193 ac p.12-41
- 2400984002 ③ Roman A. and Mattie Miller  
OR.155-774 7/3/2003  
0.805 ac p.18-664
- 2400984001 ④ Elmer A. and Laura D. Yoder  
OR.183-2064 9/29/2005  
0.877 ac p.10-525
- 2460021001 ⑤ Mervin D. and Mary Ellen Rober  
234-100 1/27/1987  
0.311 ac p.10-525
- 2460021005 ⑥ Calmoutier Memorial Association  
232-644 10/3/1986  
0.253 ac p.10-520
- 2460021002 ⑦ Calmoutier Memorial Association  
232-642 10/3/1986  
0.278 ac p.10-525
- 2400553002 ⑧ Monroe E. and Betty Ann Weaver  
OR.7-923 4/27/1998  
0.228 ac p.16-710
- 2400330000 ⑩ Wayne E. and Miriam E. Hershberger  
OR.141-202 3/6/2003  
1.253 ac p.3-67 B
- 2400330001 ⑪ Curtis E. Yoder, trustee and Rhonda J. Yoder, trustee  
OR.197-1958 6/7/2007  
0.177 ac p.19-1043
- 2400122001 ⑫ Edward R. and Esther Hershberger  
OR.60-147 10/10/2000  
1.303 ac p.17-655
- 2400122002 ⑬ Edward R. and Esther Hershberger  
OR.60-149 10/10/2000  
1.249 ac p.17-655
- 2400122005 ⑭ John R. and Arie Hershberger  
OR.60-143 10/10/2000  
1.249 ac p.17-655
- 2400122006 ⑮ John R. and Arie Hershberger  
OR.60-145 10/10/2000  
1.303 ac p.17-655

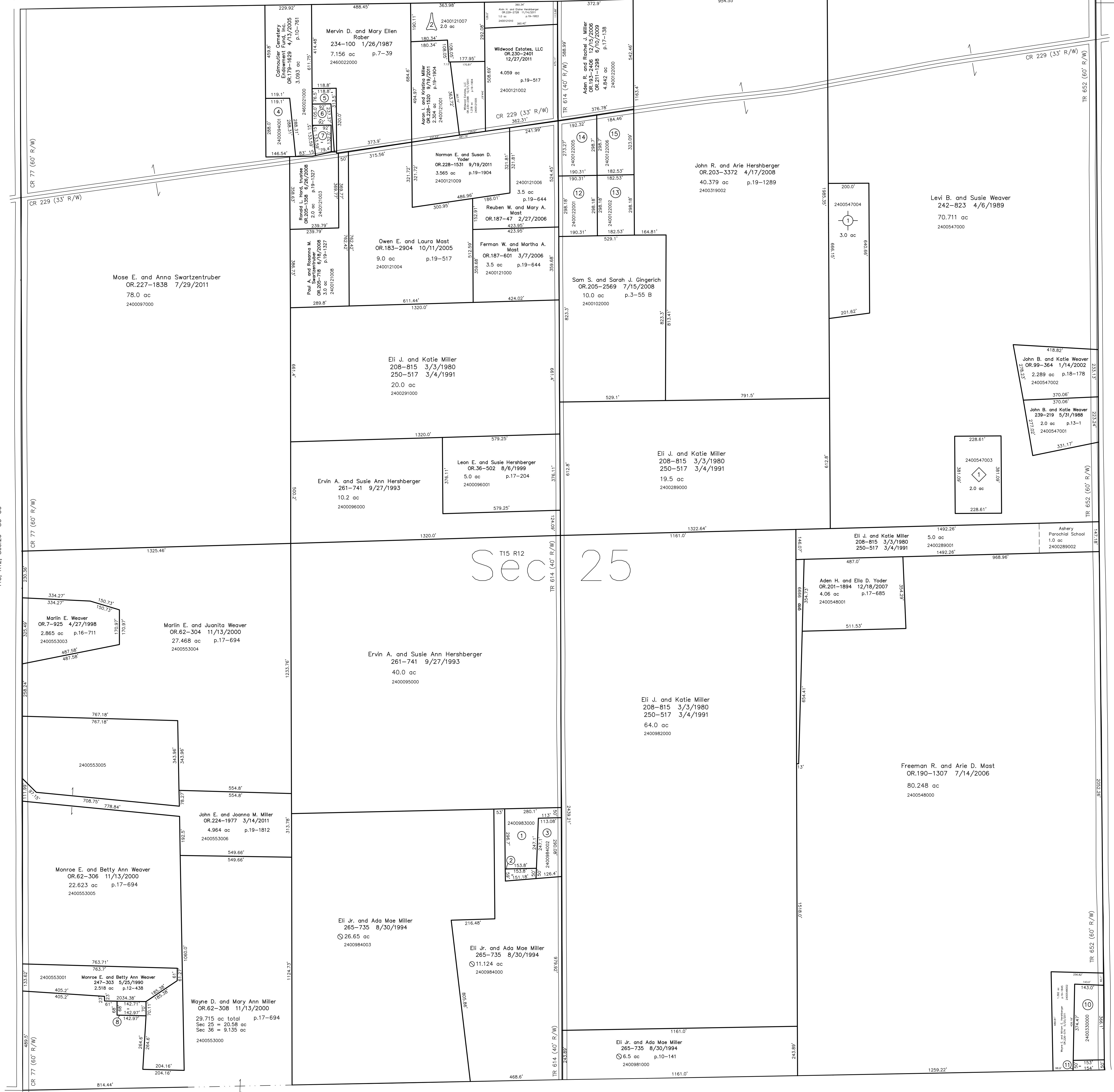
Wayne County CR 363  
Mt. Hope Road

Wayne County, Salt Creek Township T-15, R-12, Sec.24

Wayne County TR 421  
Abraham Road

Wayne County TR 179  
Kansas Road

Wayne County, Point Township  
T-15, R-11, Sec.19



T15, R12, Sec.26 SC-30

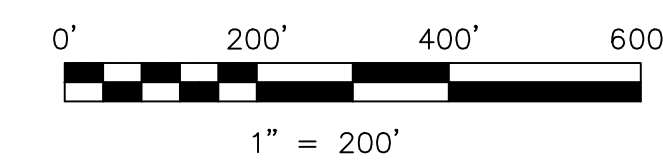
Point Township T15, R11, Sec.30 P-18

① Hickory Tree Subdivision Replat of Lot 1 and Add. Lands  
Plat 19-730 Platted 6/15/2006

② Alvin H. Hershberger  
OR.190-910 7/10/2006  
2.0 ac p.19-730

③ Long Lane Subdivision  
Plat 18-895 Platted 2/20/2004  
Ervin J. and Katie L. Weaver  
OR.170-726 2/24/2004  
3.0 ac p.18-895

④ Paul's Outlook Subdivision  
Plat 18-861 Platted 12/31/2003  
Allen L. and Christine J. Mast  
OR.192-749 7/27/2006  
2.0 ac p.18-861



LET IT BE KNOWN, THIS MAP HAS BEEN PREPARED AS A REFERENCE GUIDE TO PROPERTY OWNERSHIP. WE BELIEVE THIS INFORMATION TO BE CORRECT AND CURRENT, HOWEVER IT IS NOT INTENDED FOR ANY LEGAL USE, WHETHER IT BE IN SALES, TRANSFERS, TRADES, LEASES OF ANY TYPE, ETC., AND DO NOT ACCEPT RESPONSIBILITY FOR ERRORS OR OMISSIONS CONTAINED HEREIN.

① new survey required for next transfer

Last Revision: 12/27/2011  
**T-15, R-12, Sec.25**  
**Salt Creek Twp.**  
**Holmes County, Ohio**

**SC-35**