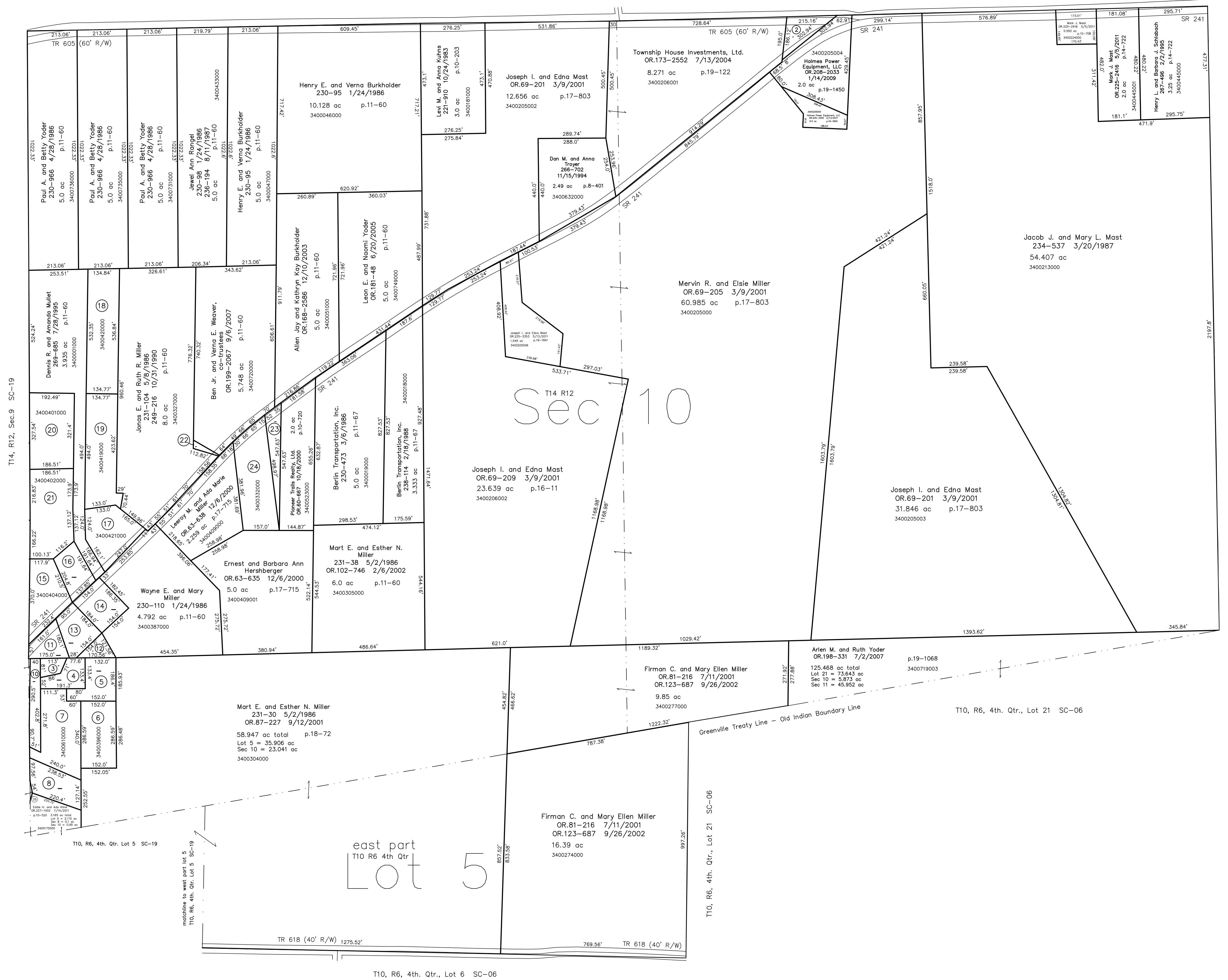


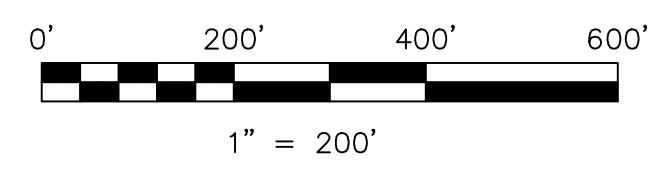
- 3460013000 (2) Trustees of Salt Creek Tp.  
75-55 12/11/1906  
0.46 ac
- 3400398000 (3) Three M Associates, LTD.  
OR.4-976 3/16/1998  
0.164 ac p.7-224
- 3400399000 (4) Three M Associates, LTD.  
OR.4-976 3/16/1998  
0.4215 ac p.10-11
- 3400400000 (5) Three M Associates, LTD.  
OR.4-976 3/16/1998  
0.6622 ac p.10-521
- 3400396000 (6) Three M Associates, LTD.  
OR.4-976 3/16/1998  
1.0 ac p.15-381
- 3400610000 (7) Three M Associates, LTD.  
OR.4-976 3/16/1998  
1.3549 ac p.10-521
- 3400306001 (8) Three M Associates  
OR.43-423 12/28/1999  
0.881 ac p.17-325
- 3400611000 (10) Three M Associates, LTD.  
OR.4-976 3/16/1998  
0.4186 ac p.7-547
- 3400397000 (11) Three M Associates, LTD.  
OR.4-976 3/16/1998  
0.42 ac p.7-457
- 3400527000 (12) Three M Associates, LTD.  
OR.4-976 3/16/1998  
0.208 ac p.10-557
- 3400526000 (13) Three M Associates, LTD.  
OR.4-976 3/16/1998  
0.433 ac p.1-122
- 3400388000 (14) Wayne E. and Mary Miller  
176-668 5/3/1971  
229-716 12/16/1985  
0.85 ac p.4-170
- 3400404000 (15) Dorothy E. and Mark E. Yoder  
Marcia D. and Arlin A. Schlabach  
OR.190-2032 7/25/2006  
0.98 ac p.5-53
- 3400405000 (16) Dennis and Amanda Mullet  
OR.190-2034 7/25/2006  
0.555 ac p.11-60
- 3400421000 (17) Eli A. and Edna Yoder  
OR.174-3085 9/3/2004  
1.0 ac p.5-109
- 3400420000 (18) Eli A. and Edna Yoder  
OR.174-3085 9/3/2004  
1.337 ac p.11-60
- 3400419000 (19) Eli A. and Edna Yoder  
OR.174-3085 9/3/2004  
1.654 ac p.12-713
- 3400401000 (20) Dennis and Amanda Mullet  
252-292 7/24/1991  
1.411 ac p.12-713
- 3400402000 (21) Dennis and Amanda Mullet  
249-324 5/15/1990  
1.563 ac p.12-499
- 3400720001 (22) Jonas E. and Ruth Miller  
274-97 6/25/1996  
0.052 ac p.16-134
- 3400332001 (23) Pioneer Trails Realty, Ltd.  
OR.60-667 10/18/2000  
0.44 ac p.17-315
- 3400332000 (24) Leroy and Ada Marie Miller  
254-1006 3/30/1992  
1.56 ac p.10-954
- 3400301000 (25) Mart E. and Esther N. Miller  
231-38 5/2/1986  
OR.178-1023 2/16/2005  
0.01 ac p.19-313

T14, R12, Sec.3 SC-24



T14, R12, Sec.11 SC-27

Last Revision: 7/14/2011  
**T-10, R-6, 4th. Qtr. Lot 5**  
**T-14, R-12, Sec.10**  
**Salt Creek Twp.**  
**Holmes County, Ohio**



LET IT BE KNOWN, THIS MAP HAS BEEN PREPARED AS A REFERENCE GUIDE TO PROPERTY OWNERSHIP. WE BELIEVE THIS INFORMATION TO BE CORRECT AND CURRENT. HOWEVER IT IS NOT INTENDED FOR ANY LEGAL USE, WHETHER IT BE IN SALES, TRANSFERS, TRADES, LEASES OF ANY TYPE, ETC., AND DO NOT ACCEPT RESPONSIBILITY FOR ERRORS OF ANY NATURE OR OMISSIONS CONTAINED HEREIN.

new survey required for next transfer

**SC-23**