

2400467001 ① Isaac I. and Esther Stutzman
OR.193-2477 12/18/2006
1.165 ac p.19-279

2400459000 ⑤ Pine Grove Holdings, LLC
OR.227-999 7/14/2011
0.068 ac p.8-200

2400512001 ⑥ John A. and Katie J. Troyer
264-205 4/25/1994
1.668 ac p.14-494

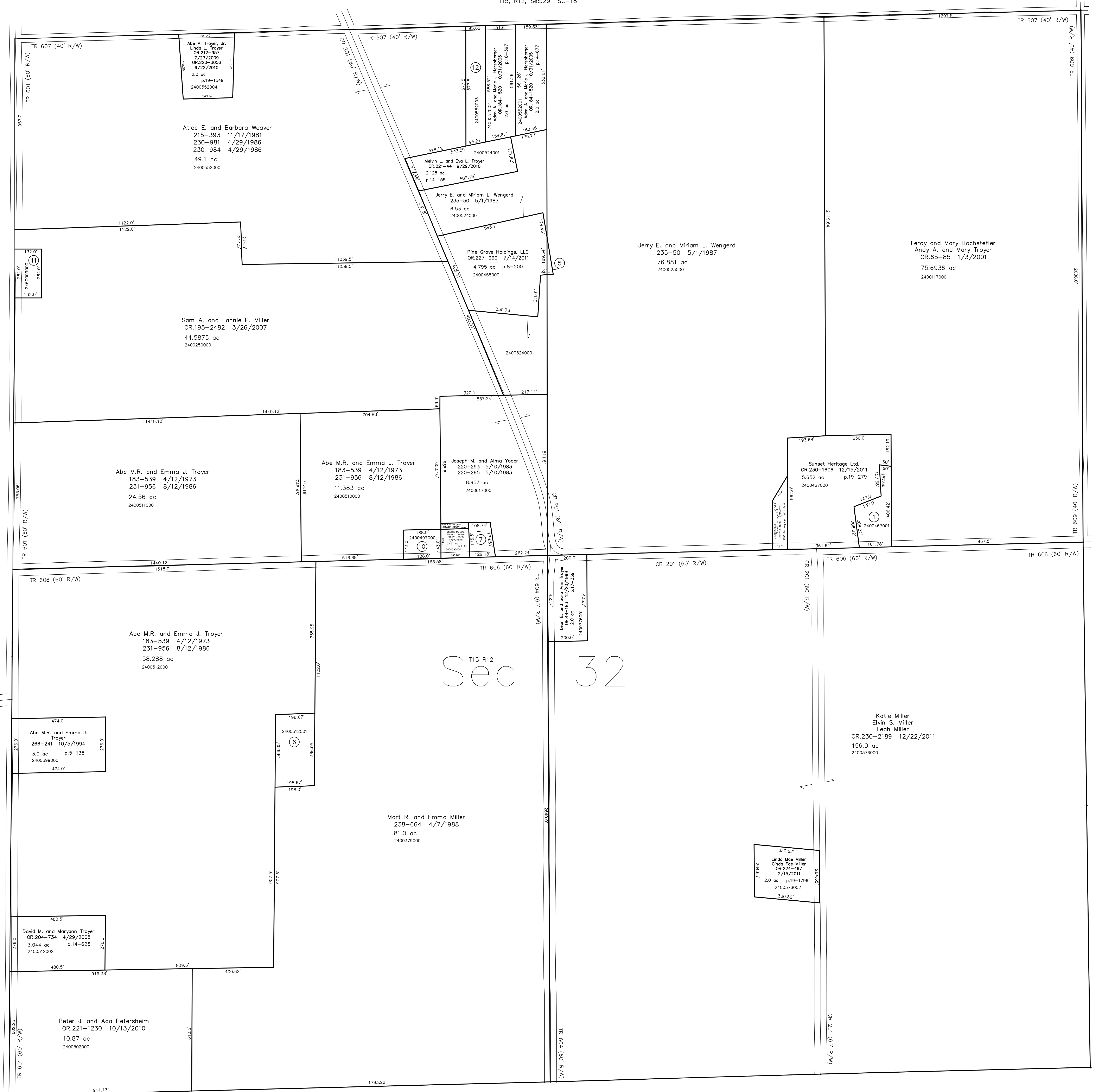
2400592001 ⑦ Andy A. and Mary A. Troyer
OR.214-376 10/13/2009
0.479 ac p.14-642

2400497000 ⑩ Sara Swartztruber
171-1 7/1/1969
252-93 7/8/1991
0.617 ac

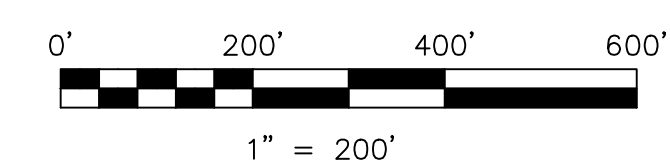
2460009000 ⑪ Leeper Parochial School Board
167-105 6/25/1968
0.6125 ac

2400552003 ⑫ Atlee E. and Barbara Weaver
215-393 11/17/1981
230-981 4/29/1986
230-984 4/29/1986
49.1 ac
2400552000

T15, R12, Sec.31 SC-13



T15, R12, Sec.33 SC-21



LET IT BE KNOWN, THIS MAP HAS BEEN PREPARED AS A REFERENCE GUIDE TO PROPERTY OWNERSHIP. WE BELIEVE THIS INFORMATION TO BE CORRECT AND CURRENT, HOWEVER IT IS NOT INTENDED FOR ANY LEGAL USE, WHETHER IT BE IN SALES, TRANSFERS, TRADES, LEASES OF ANY TYPE, ETC., AND DO NOT ACCEPT RESPONSIBILITY FOR ERRORS OF ANY NATURE OR OMISSIONS CONTAINED HEREIN.

⊖ new survey required for next transfer

Last Revision: 12/22/2011
T-15, R-12, Sec.32
Salt Creek Twp.
Holmes County, Ohio

SC-17

