

- 2400983000 ① Roman A. and Mattie Miller
261-967 10/19/1993
1.228 ac p.10-144
- 2400984001 ② Roman A. and Mattie Miller
261-967 10/19/1993
0.193 ac p.12-41
- 2400984002 ③ Roman A. and Mattie Miller
OR.155-774 7/3/2003
0.805 ac p.18-664
- 2400984001 ④ Elmer A. and Laura D. Yoder
OR.183-2064 9/29/2005
0.877 ac p.10-525
- 2460021001 ⑤ Mervin D. and Mary Ellen Rober
234-100 1/27/1987
0.311 ac p.10-525
- 2460021005 ⑥ Calmoutier Memorial Association
232-644 10/3/1986
0.263 ac p.10-520
- 2460021002 ⑦ Calmoutier Memorial Association
232-642 10/3/1986
0.278 ac p.10-525
- 2400553002 ⑧ Monroe E. and Betty Ann Weaver
OR.7-925 4/27/1998
0.228 ac p.16-710
- 2400121001 ⑨ Altee B. and Tina aka Tena Miller
OR.190-913 7/10/2006
0.219 ac p.19-730
- 2400330000 ⑩ Wayne E. and Miriam E. Hershberger
OR.141-202 3/6/2003
1.253 ac p.3-67 B
- 2400330001 ⑪ Curtis E. Yoder, trustee and Rhonda J. Yoder, trustee
OR.197-1958 6/7/2007
0.177 ac p.19-1043
- 2400122001 ⑫ Edward R. and Esther Hershberger
OR.60-147 10/10/2000
1.303 ac p.17-655
- 2400122002 ⑬ Edward R. and Esther Hershberger
OR.60-149 10/10/2000
1.249 ac p.17-655
- 2400122005 ⑭ John R. and Arie Hershberger
OR.60-143 10/10/2000
1.249 ac p.17-655
- 2400122006 ⑮ John R. and Arie Hershberger
OR.60-145 10/10/2000
1.303 ac p.17-655

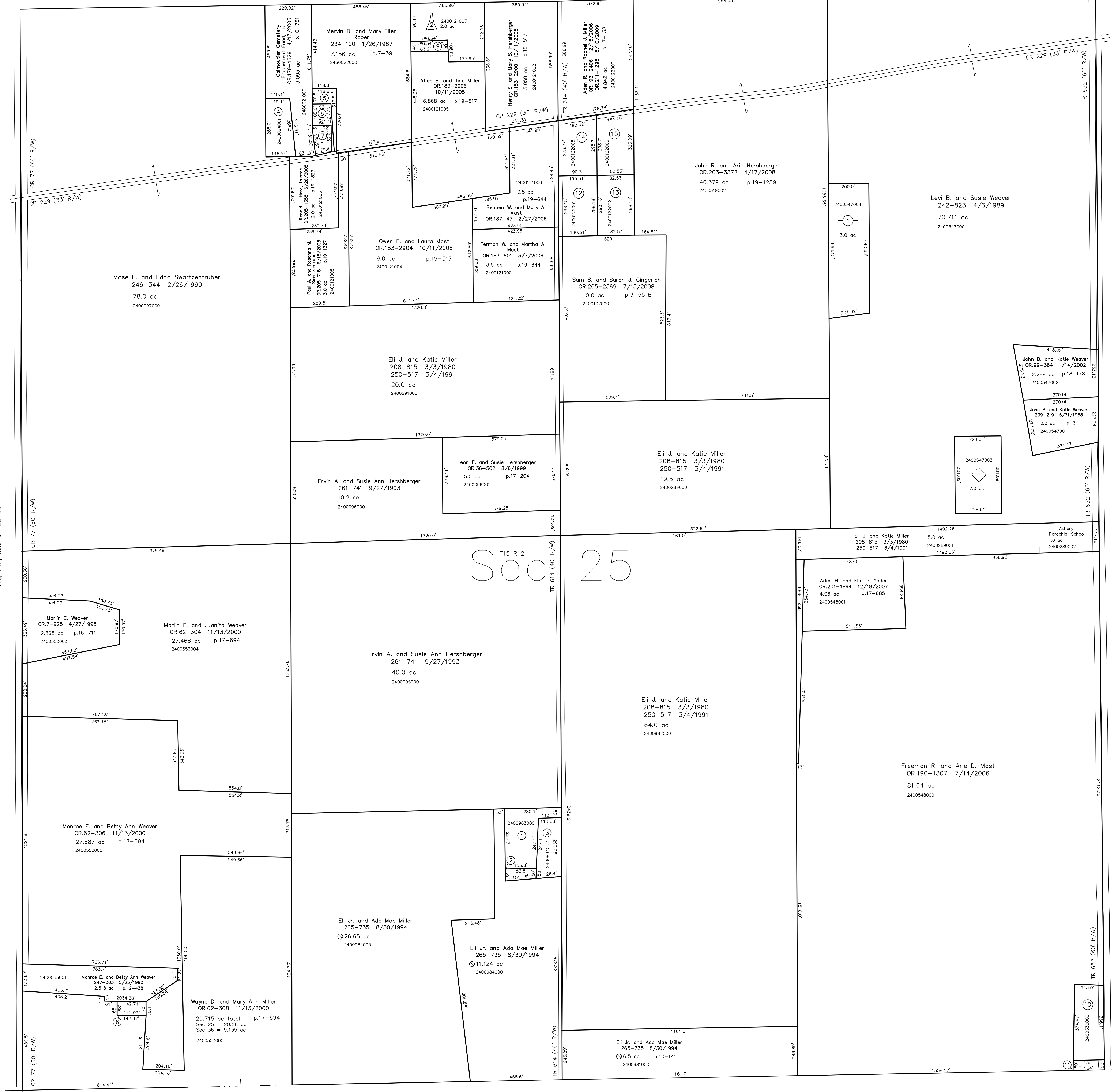
Wayne County CR 363
Mt. Hope Road

Wayne County, Salt Creek Township T-15, R-12, Sec.24

Wayne County TR 421
Abraham Road

Wayne County TR 179
Kansas Road

Wayne County, Point Township
T-15, R-11, Sec.19



T15, R12, Sec.26 SC-30

T15, R12, Sec.36 SC-34

Point Township T15, R11, Sec.30 P-18

① Hickory Tree Subdivision Replat of Lot 1 and Add. Lands
Plat 19-730 Platted 6/15/2006

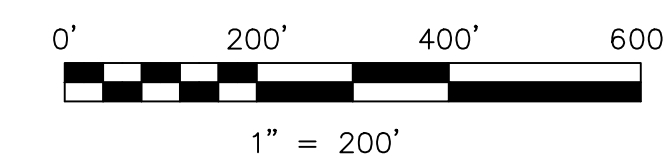
② 2400121007 Alvin H. Hershberger
OR.190-910 7/10/2006
2.0 ac p.19-730

③ Long Lane Subdivision
Plat 18-895 Platted 2/20/2004

④ 2400547004 Ervin J. and Katie L. Weaver
OR.170-726 2/24/2004
3.0 ac p.18-895

⑤ Paul's Outlook Subdivision
Plat 18-861 Platted 12/31/2003

⑥ 2400547003 Allen L. and Christine J. Mast
OR.192-749 10/11/2006
2.0 ac p.18-861



LET IT BE KNOWN, THIS MAP HAS BEEN PREPARED AS A REFERENCE
GUIDE TO PROPERTY OWNERSHIP. WE BELIEVE THIS INFORMATION TO
BE CORRECT AND CURRENT, HOWEVER IT IS NOT INTENDED FOR ANY
LEGAL USE, WHETHER IT BE IN SALES, TRANSFERS, TRADES, LEASES
OR ANY TYPE, ETC., AND DO NOT ACCEPT RESPONSIBILITY FOR
ERRORS OR ANY NATURE OR OMISSIONS CONTAINED HEREIN.

⑦ new survey required
for next transfer

Last Revision: 6/10/2009
T-15, R-12, Sec.25
Salt Creek Twp.
Holmes County, Ohio

SC-35

