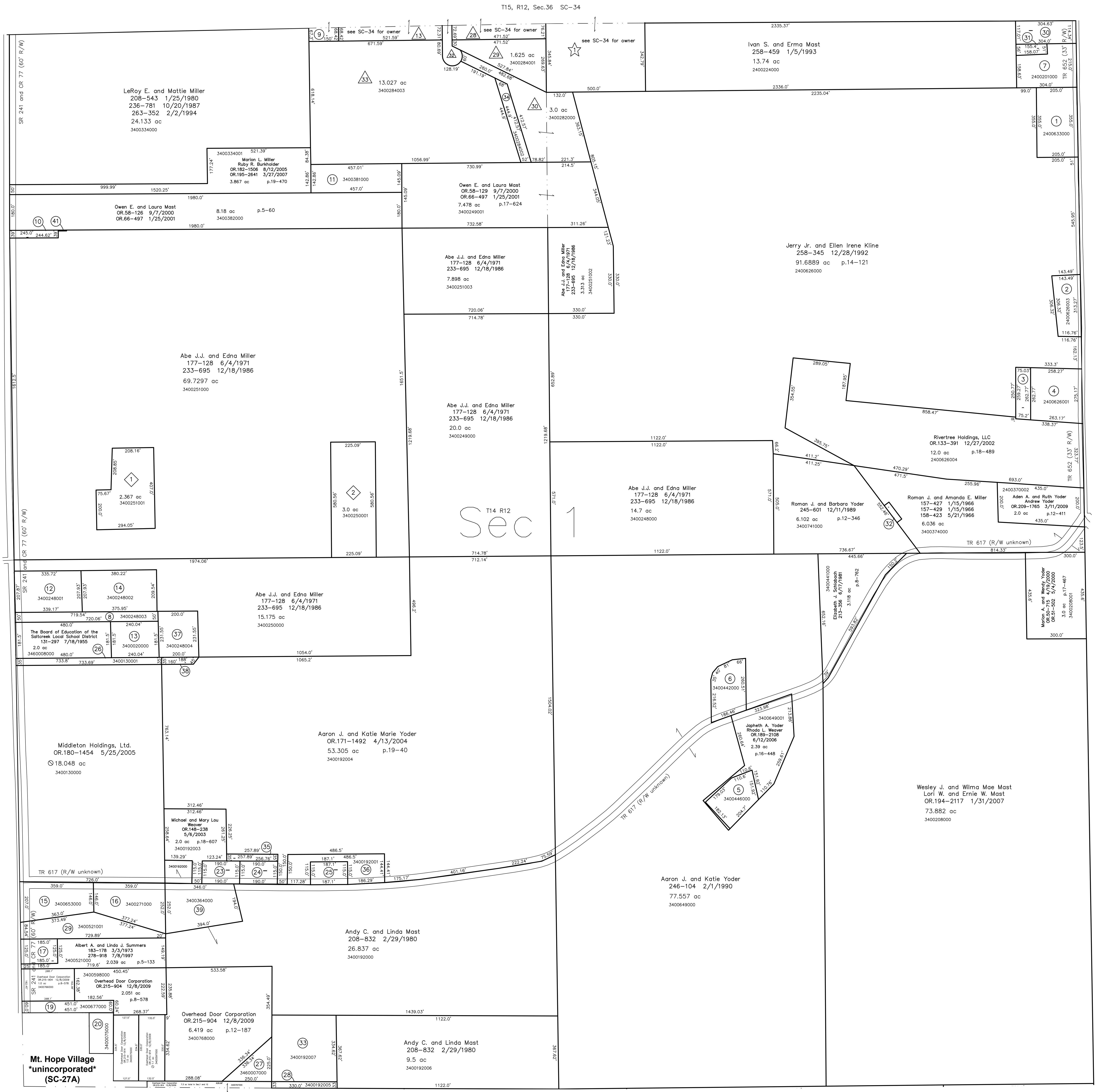
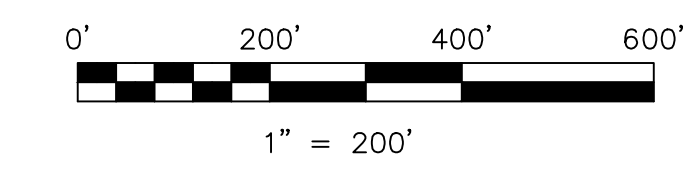


- 2400633000 (1) Ervin A. and Susie Ann Herabberger  
OR 21-99 11/25/1998  
1.87 ac p.7-301
- 2400626003 (2) Eli A. Yoder  
166-279 4/25/1968  
258-343 12/28/1992  
OR 199-3034 9/24/2007  
0.9233 ac p.14-120
- 2400626002 (3) Rivertree Holdings, LLC  
OR 54-632 6/30/2000  
0.4494 ac p.14-116
- 2400626001 (4) Rivertree Holdings, LLC  
OR 54-632 6/30/2000  
1.6066 ac p.12-810
- 3400446000 (5) Japheth A. Yoder and Rhoda L. Weaver  
OR 189-2108 6/12/2006  
0.871 ac p.10-320
- 3400442000 (6) Joel A. and Ruby Yoder  
OR 190-2276 7/27/2006  
1.082 ac p.12-366
- 2400201000 (7) Emanuel Jr. and Fannie Mast  
187-535 6/14/1974  
OR 208-451 12/11/2008  
1.308 ac
- 3400248003 (8) Board of Education East Holmes Local School District  
OR 175-3123 10/25/2004  
0.808 ac p.19-214
- 3400307000 (9) Leroy E. and Mattie Miller  
OR 200-619 10/9/2007  
0.234 ac p.19-1158
- 3400380000 (10) Owen E. and Laura Mast  
OR 58-126 9/7/2000  
OR 66-497 1/25/2001  
0.219 ac p.12-384
- 3400381000 (11) Owen E. and Laura Mast  
OR 58-126 9/7/2000  
OR 66-497 1/25/2001  
0.219 ac p.12-384
- 3400248001 (12) Larry A. and Nettie Miller  
286-886 12/14/1994  
1.61 ac p.14-663
- 3400202000 (13) Board of Education East Holmes Local School District  
243-501 5/26/1989  
1.0 ac p.12-223
- 3400248002 (14) Larry A. and Nettie Miller  
OR 175-2811 10/21/2004  
1.812 ac p.19-214
- 3400653000 (15) Abe L. and Barbara Yoder  
186-665 3/25/1974  
OR 92-805 11/9/2001  
1.38 ac p.5-30
- 3400271000 (16) Calvin R. and Betty Miller  
228-448 8/19/1985  
1.64 ac p.5-133
- 3400520000 (17) Albert A. and Linda J. Summers  
150-141 4/29/1963  
278-918 7/8/1997  
0.53 ac p.3-90 B
- 0000000000 (18) not used
- 3400677000 (19) Paul A. and Betty Yoder  
OR 59-944 10/6/2000  
0.62 ac p.5-30
- 3400075000 (20) D and P Enterprises  
188-546 7/1/1977  
0.5 ac
- 0000000000 (21) not used
- 0000000000 (22) not used
- 3400608000 (23) Ivan M. and Ada Weaver  
244-782 9/21/1989  
0.502 ac p.12-298
- 3400607000 (24) Ivan M. and Ada Weaver  
165-347 1/12/1966  
0.5 ac p.4-74
- 3400318000 (25) Ivan M. and Elia Miller  
251-183 4/30/1991  
0.494 ac p.12-646
- 3400130001 (26) Board of Education East Holmes Local School District  
OR 183-3096 10/11/2005  
0.602 ac p.19-520
- 3460007000 (27) Holmes County Board of Commissioners  
230-411 2/27/1986  
0.6457 ac p.11-19
- 3400192005 (28) Andy C. and Linda Mast  
208-832 2/29/1980  
0.25 ac
- 3400521001 (29) Mt. Hope Inc. Ltd.  
OR 43-342 12/7/1999  
1.561 ac p.16-641
- 2400224001 (30) Noah A. and Neva Rober  
OR 51-86 4/26/2000  
0.808 ac p.17-471
- 2400201001 (31) Noah A. and Neva Rober  
OR 51-86 4/26/2000  
0.194 ac p.17-471
- 3400374001 (32) Roman J. and Barbara A. Yoder  
OR 133-276 12/24/2002  
0.072 ac p.18-487
- 3400192007 (33) Andy C. and Linda Mast  
208-832 2/29/1980  
1.8663 ac
- 3400284002 (34) Owen E. and Laura Mast  
OR 200-1162 10/16/2007  
0.492 ac p.19-1136
- 3400192002 (35) Ivan M. and Ada Weaver  
OR 148-236 5/6/2003  
0.207 ac p.18-607
- 3400192001 (36) Ivan M. and Elia Miller  
OR 148-234 5/6/2003  
1.201 ac p.18-607
- 3400248004 (37) Board of Education East Holmes Local School District  
OR 186-368 1/12/2006  
1.063 ac p.19-520
- 3400192008 (38) Board of Education East Holmes Local School District  
OR 197-2455 6/14/2007  
0.143 ac p.19-1050
- 3400364000 (39) Mose L. and/or Mattie Miller  
181-414 9/11/1972  
1.5 ac
- 0000000000 (40) not used
- 3400251004 (41) Owen E. and Laura Mast  
OR 206-601 8/12/2008  
0.0043 ac p.19-1353



- ◆ A & L Subdivision  
Plat 2-372 Platted 10/3/2003
- 3400251001 ◆ A & L Real Estate, Ltd.  
OR 170-787 2/25/2004  
2.367 ac p.2-372
- 3400250001 ◆ Leon A. and Laura Miller  
OR 170-785 2/25/2004  
3.0 ac p.2-372
- ▲ Hopeview Subdivision Allotment No.1 Second Addition  
Plat 2-384 Platted 6/18/2004
- 3400284001 ▲ Ben and Savilla Miller  
OR 176-399 11/2/2004  
1.628 ac p.2-384
- 3400282000 ▲ David A. and Marie Miller  
OR 176-397 11/2/2004  
3.0 ac p.2-384
- ▲ Hopeview Subdivision Allotment No.1 Second Addition Replat of Lot 31  
Plat 19-1136 Platted 9/17/2007
- 3400284003 ▲ Willis D. and Anna Kathryn Miller  
OR 176-395 11/2/2004  
13.027 ac p.19-1136



LET IT BE KNOWN, THIS MAP HAS BEEN PREPARED AS A REFERENCE GUIDE TO PROPERTY OWNERSHIP. WE BELIEVE THIS INFORMATION TO BE CORRECT AND CURRENT, HOWEVER IT IS NOT INTENDED FOR ANY LEGAL USE, WHETHER IT BE IN SALES, TRANSFERS, TRADES, LEASES OF ANY TYPE, ETC., AND DO NOT ACCEPT RESPONSIBILITY FOR ERRORS OF ANY NATURE OR OMISSIONS CONTAINED HEREIN.

○ new survey required for next transfer

Last Revision: 12/8/2009  
**T-14, R-12, Sec.1**  
**Salt Creek Twp.**  
**Holmes County, Ohio**

**SC-33**

T15, R12, Sec.36 SC-34

T14 R12  
 Sec 1

T14, R12, Sec.12 SC-32

Point Township T14, R11, Sec 6 P-16