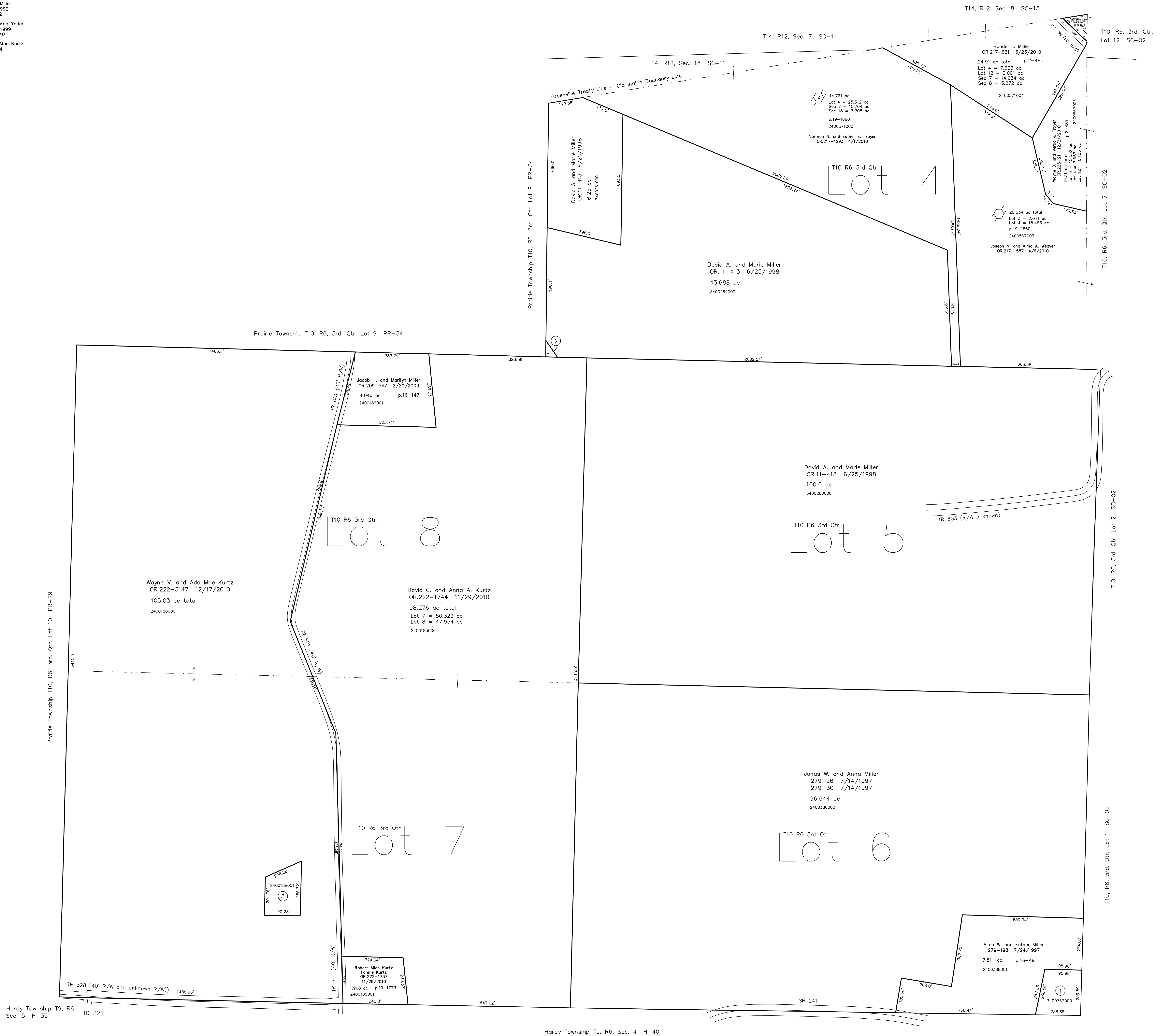
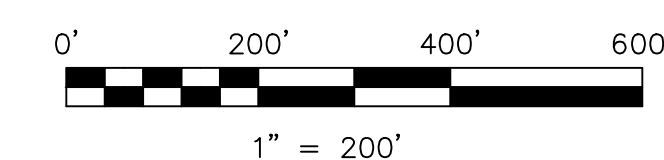


- 3400762000 ① Roy J. and Elmina Miller
257-595 10/10/1992
1.205 ac p.14-42
- 3400262001 ② Willis J. and Anna Mae Yoder
OR.33-507 6/17/1999
0.062 ac p.17-140
- 2400188001 ③ Wayne V. and Ada Mae Kurtz
265-19 6/27/1994
1.06 ac p.14-541



Rosan Farm Subdivision
Plot 19-1660 Platted 3/24/2010

Last Revision: 12/21/2010
T-10, R-6, 3rd. Qtr.
Lots 4,5,6,7,8
Salt Creek Twp.
Holmes County, Ohio



LET IT BE KNOWN, THIS MAP HAS BEEN PREPARED AS A REFERENCE GUIDE TO PROPERTY OWNERSHIP. WE BELIEVE THIS INFORMATION TO BE CORRECT AND CURRENT, HOWEVER IT IS NOT INTENDED FOR ANY LEGAL USE, WHETHER IT BE IN SALES, TRANSFERS, TRADES, LEASES OF ANY TYPE, ETC., AND DO NOT ACCEPT RESPONSIBILITY FOR ERRORS OF ANY NATURE OR OMISSIONS CONTAINED HEREIN.

new survey required for next transfer

SC-01