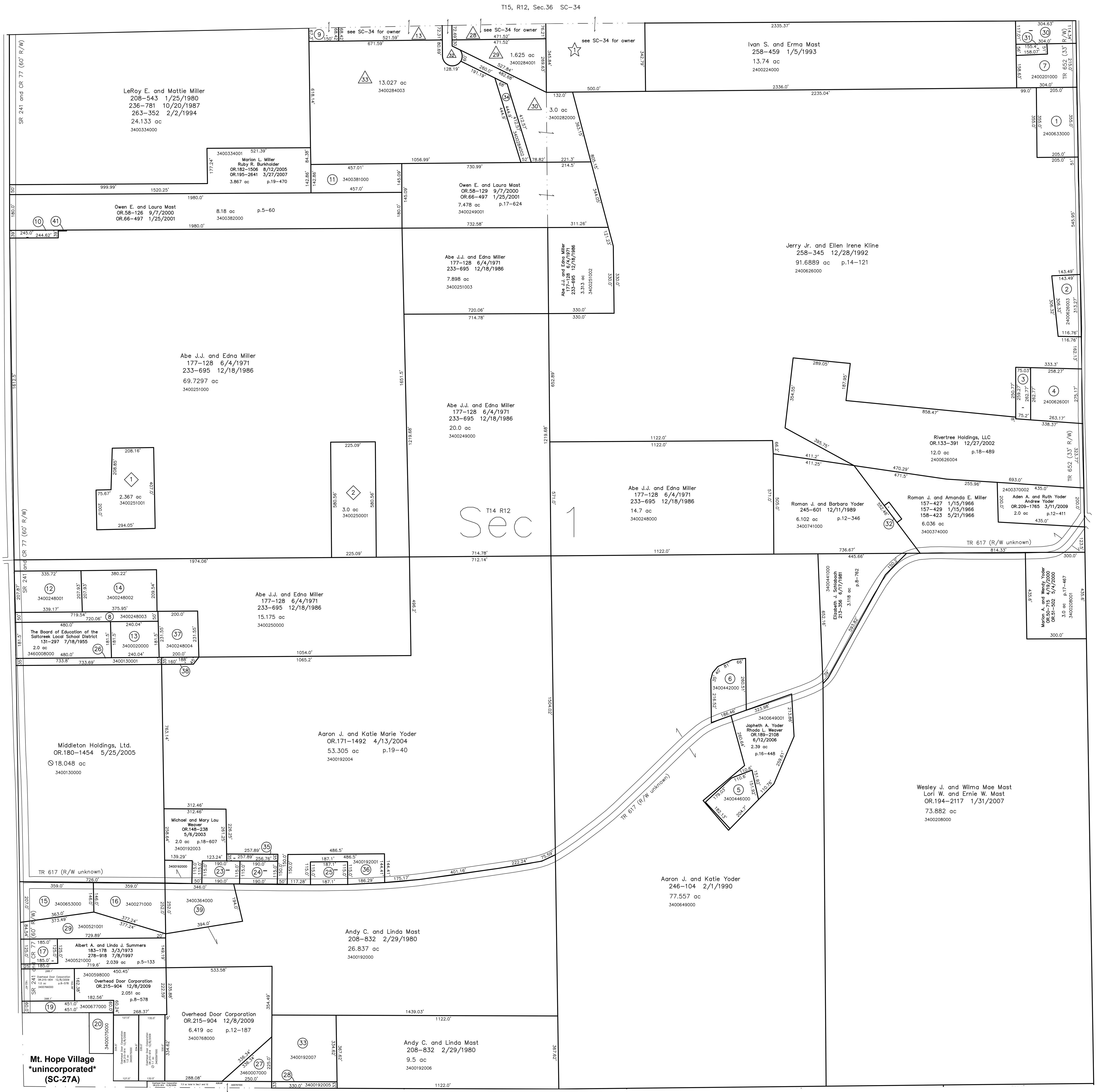


- 2400633000 (1) Ervin A. and Susie Ann Herabberger
OR 21-99 11/25/1998
1.87 ac p.7-301
- 2400626003 (2) Eli A. Yoder
166-279 4/25/1968
258-343 12/28/1992
OR 199-3034 9/24/2007
0.9233 ac p.14-120
- 2400626002 (3) Rivertree Holdings, LLC
OR 54-632 6/30/2000
0.4494 ac p.14-116
- 2400626001 (4) Rivertree Holdings, LLC
OR 54-632 6/30/2000
1.6066 ac p.12-810
- 3400446000 (5) Japheth A. Yoder and Rhoda L. Weaver
OR 189-2108 6/12/2006
0.871 ac p.10-320
- 3400442000 (6) Joel A. and Ruby Yoder
OR 190-2276 7/27/2006
1.082 ac p.12-366
- 2400201000 (7) Emanuel Jr. and Fannie Mast
187-535 6/14/1974
OR 208-451 12/11/2008
1.308 ac
- 3400248003 (8) Board of Education East Holmes Local School District
OR 175-3123 10/25/2004
0.808 ac p.19-214
- 3400307000 (9) Leroy E. and Mattie Miller
OR 200-619 10/9/2007
0.234 ac p.19-1158
- 3400380000 (10) Owen E. and Laura Mast
OR 58-126 9/7/2000
OR 66-497 1/25/2001
0.219 ac p.12-384
- 3400381000 (11) Owen E. and Laura Mast
OR 58-126 9/7/2000
OR 66-497 1/25/2001
0.219 ac p.12-384
- 3400248001 (12) Larry A. and Nettie Miller
286-886 12/14/1994
1.61 ac p.14-663
- 3400202000 (13) Board of Education East Holmes Local School District
243-501 5/26/1989
1.0 ac p.12-223
- 3400248002 (14) Larry A. and Nettie Miller
OR 175-2811 10/21/2004
1.812 ac p.19-214
- 3400653000 (15) Abe L. and Barbara Yoder
186-665 3/25/1974
OR 92-805 11/9/2001
1.38 ac p.5-30
- 3400271000 (16) Calvin R. and Betty Miller
228-448 8/19/1985
1.64 ac p.5-133
- 3400520000 (17) Albert A. and Linda J. Summers
150-141 4/29/1963
278-918 7/8/1997
0.53 ac p.3-90 B
- 0000000000 (18) not used
- 3400677000 (19) Paul A. and Betty Yoder
OR 59-944 10/6/2000
0.62 ac p.5-30
- 3400075000 (20) D and P Enterprises
188-546 7/1/1977
0.5 ac
- 0000000000 (21) not used
- 0000000000 (22) not used
- 3400608000 (23) Ivan M. and Ada Weaver
244-782 9/21/1989
0.502 ac p.12-298
- 3400607000 (24) Ivan M. and Ada Weaver
165-347 1/12/1966
0.5 ac p.4-74
- 3400318000 (25) Ivan M. and Elia Miller
251-183 4/30/1991
0.494 ac p.12-646
- 3400130001 (26) Board of Education East Holmes Local School District
OR 183-3096 10/11/2005
0.602 ac p.19-520
- 3460007000 (27) Holmes County Board of Commissioners
230-411 2/27/1986
0.6457 ac p.11-19
- 3400192005 (28) Andy C. and Linda Mast
208-832 2/29/1980
0.25 ac
- 3400521001 (29) Mt. Hope Inc. Ltd.
OR 43-342 12/7/1999
1.561 ac p.16-641
- 2400224001 (30) Noah A. and Neva Rober
OR 51-66 4/26/2000
0.808 ac p.17-471
- 2400201001 (31) Noah A. and Neva Rober
OR 51-66 4/26/2000
0.194 ac p.17-471
- 3400374001 (32) Roman J. and Barbara A. Yoder
OR 133-276 12/24/2002
0.072 ac p.18-487
- 3400192007 (33) Andy C. and Linda Mast
208-832 2/29/1980
1.8663 ac
- 3400284002 (34) Owen E. and Laura Mast
OR 200-1162 10/16/2007
0.492 ac p.19-1136
- 3400192002 (35) Ivan M. and Ada Weaver
OR 148-236 5/6/2003
0.207 ac p.18-607
- 3400192001 (36) Ivan M. and Elia Miller
OR 148-234 5/6/2003
1.201 ac p.18-607
- 3400248004 (37) Board of Education East Holmes Local School District
OR 186-368 1/12/2006
1.063 ac p.19-520
- 3400192008 (38) Board of Education East Holmes Local School District
OR 197-2455 6/14/2007
0.143 ac p.19-1050
- 3400364000 (39) Mose L. and/or Mattie Miller
181-414 9/11/1972
1.5 ac
- 0000000000 (40) not used
- 3400251004 (41) Owen E. and Laura Mast
OR 208-601 8/12/2008
0.0043 ac p.19-1353



- ◆ A & L Subdivision
Plat 2-372 Platted 10/3/2003
3400251001 (1) A & L Real Estate, Ltd.
OR 170-787 2/25/2004
2.367 ac p.2-372
3400250001 (2) Leon A. and Laura Miller
OR 170-785 2/25/2004
3.0 ac p.2-372
- △ Hopeview Subdivision Allotment No.1 Second Addition
Plat 2-384 Platted 6/18/2004
3400284001 (3) Ben and Savilla Miller
OR 176-399 11/2/2004
1.628 ac p.2-384
3400282000 (4) David A. and Marie Miller
OR 176-397 11/2/2004
3.0 ac p.2-384
- △ Hopeview Subdivision Allotment No.1 Second Addition Replat of Lot 31
Plat 19-1136 Platted 9/17/2007
3400284003 (5) Willis D. and Anna Kathryn Miller
OR 176-395 11/2/2004
13.027 ac p.19-1136

T14, R12, Sec.2 SC-28

T14, R12, Sec.1 SC-33

Point Township T14, R11, Sec 6 P-16



LET IT BE KNOWN, THIS MAP HAS BEEN PREPARED AS A REFERENCE GUIDE TO PROPERTY OWNERSHIP. WE BELIEVE THIS INFORMATION TO BE CORRECT AND CURRENT, HOWEVER IT IS NOT INTENDED FOR ANY LEGAL USE, WHETHER IT BE IN SALES, TRANSFERS, TRADES, LEASES OF ANY TYPE, ETC., AND DO NOT ACCEPT RESPONSIBILITY FOR ERRORS OF ANY NATURE OR OMISSIONS CONTAINED HEREIN.

new survey required for next transfer

SC-33

Last Revision: 12/8/2009
T-14, R-12, Sec.1
Salt Creek Twp.
Holmes County, Ohio