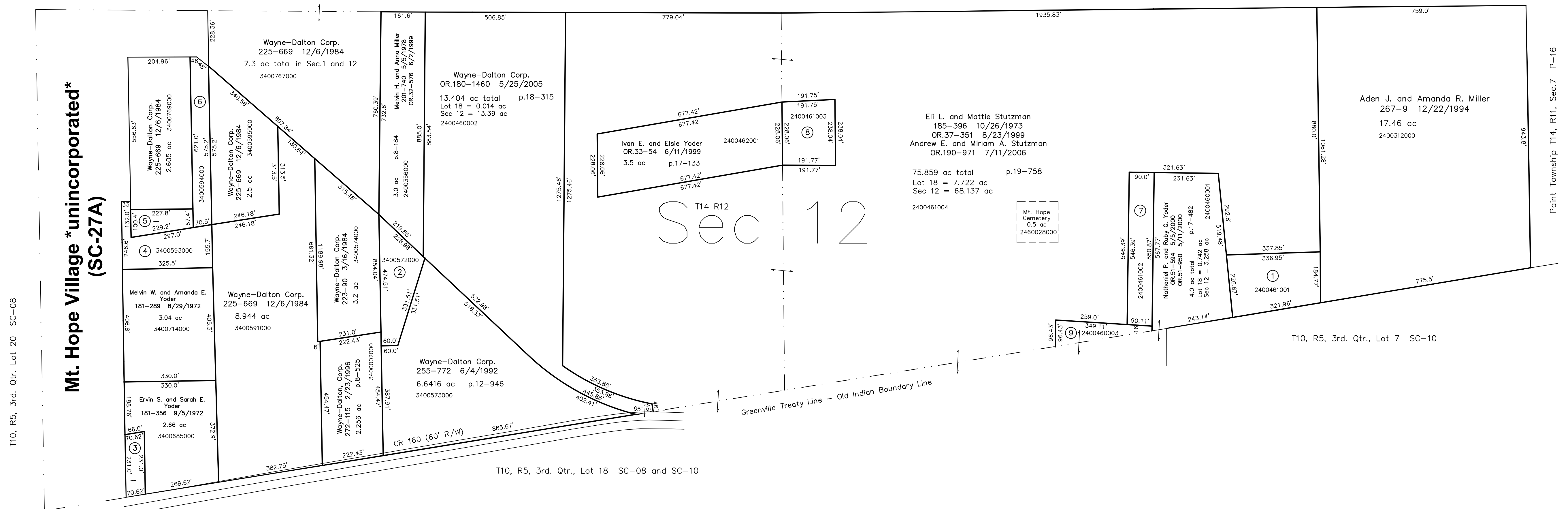
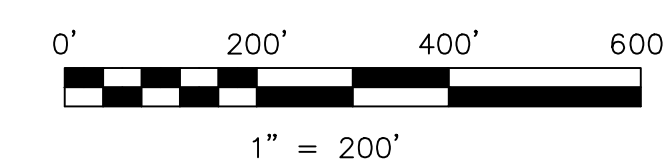


- 2400461001 ① Joseph A. Miller  
OR 172-2499 6/1/2004  
1.551 ac p.14-878
- 3400572000 ② Wayne-Dalton Corp.  
225-669 12/6/1984  
1.11 ac p.12-214
- 3400571000 ③ Wayne-Dalton Corp.  
225-669 12/6/1984  
0.3 ac
- 3400593000 ④ Wayne-Dalton Corp.  
225-669 12/6/1984  
1.1 ac p.3-33 B
- 3400592000 ⑤ Wayne-Dalton Corp.  
225-669 12/6/1984  
0.395 ac p.3-34 B
- 3400594000 ⑥ Wayne-Dalton Corp.  
225-669 12/6/1984  
1.06 ac p.5-18
- 2400461002 ⑦ Nathaniel P. and Ruby C. Yoder  
OR 116-799 7/26/2002  
1.134 ac p.18-341
- 2400461003 ⑧ Ivan E. and Elsie Yoder  
OR 174-1503 8/12/2004  
1.026 ac p.19-153
- 2400460003 ⑨ Eli L. and Mottie Stutzman  
OR 190-969 7/11/2006  
0.454 ac p.19-758

T14, R12, Sec.1 SC-33



Last Revision: 7/11/2006  
**T-14, R-12, Sec.12**  
**Salt Creek Twp.**  
**Holmes County, Ohio**



LET IT BE KNOWN, THIS MAP HAS BEEN PREPARED AS A REFERENCE GUIDE TO PROPERTY OWNERSHIP. WE BELIEVE THIS INFORMATION TO BE CORRECT AND CURRENT. HOWEVER IT IS NOT INTENDED FOR ANY LEGAL USE, WHETHER IT BE IN SALES, TRANSFERS, TRADES, LEASES OF ANY TYPE, ETC., AND DO NOT ACCEPT RESPONSIBILITY FOR ERRORS OF ANY NATURE OR OMISSIONS CONTAINED HEREIN.

⊙ new survey required for next transfer

# SC-32