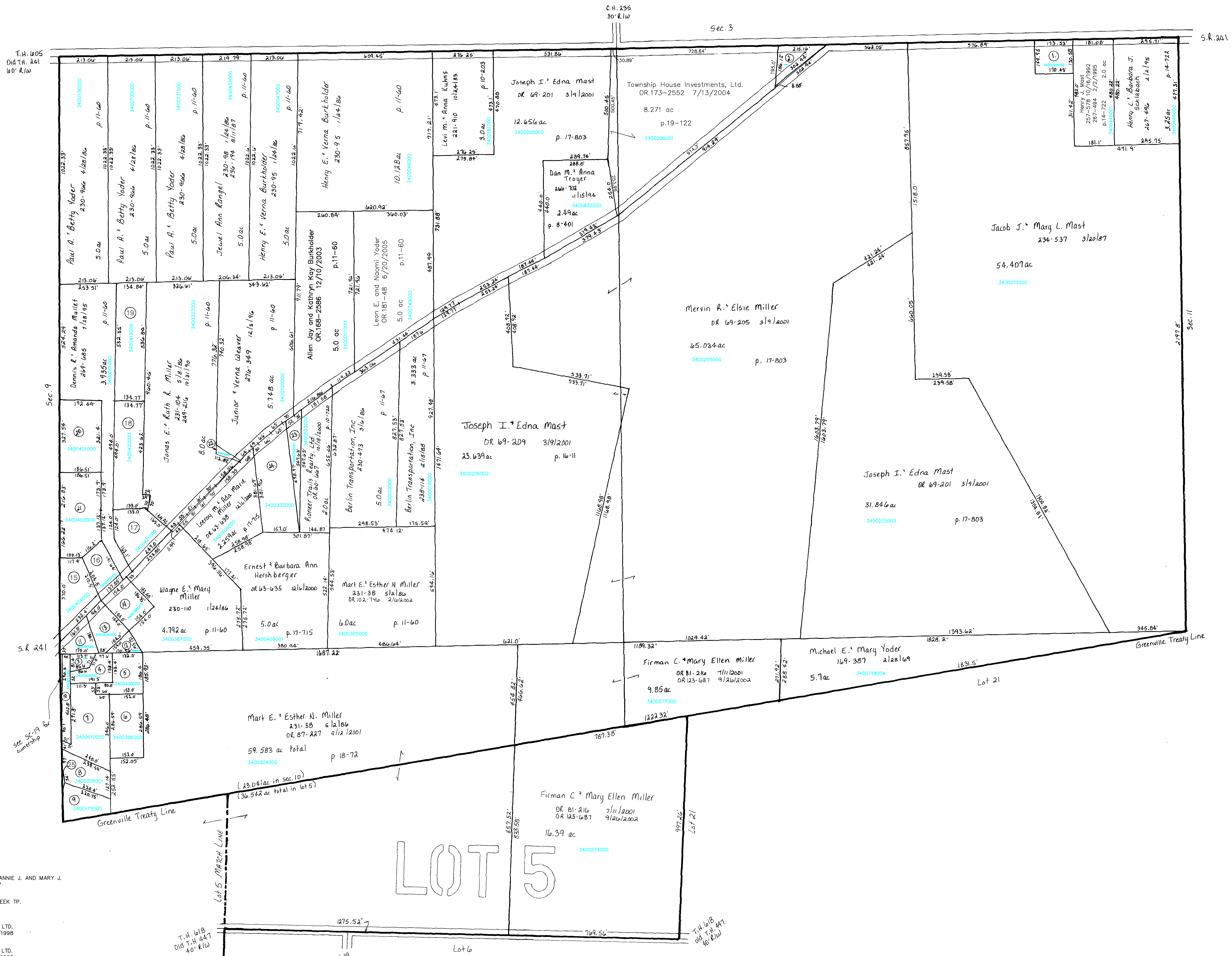


T.H. 605
Dtd. 11-24-11
140' R/W



- 3400224000 ① MAST HENRY J. AND FANNIE J. AND MARY J.
277-6 2/3/1997
0.593 ac p.10-708
- 3400130000 ② TRUSTEES OF SALT CREEK TP.
75-55 12/11/1906
0.46 ac
- 3400398000 ③ THREE M ASSOCIATES, LTD.
OR.0004-976 3/16/1998
0.164 ac p.7-224
- 3400399000 ④ THREE M ASSOCIATES, LTD.
OR.0004-976 3/16/1998
0.4215 ac p.10-11
- 3400400000 ⑤ THREE M ASSOCIATES, LTD.
OR.0004-976 3/16/1998
0.6922 ac p.10-521
- 3400396000 ⑥ THREE M ASSOCIATES, LTD.
OR.0004-976 3/16/1998
1.0 ac p.12-381
- 3400610000 ⑦ THREE M ASSOCIATES, LTD.
OR.0004-976 3/16/1998
1.3549 ac p.10-521
- 3400306001 ⑧ THREE M ASSOCIATES
OR.0043-423 12/8/1999
0.881 ac p.17-325
- 3400175000 ⑨ KLINE HENRY L. AND ANNA
230-116 1/27/1986
0.95 ac p.10-520
- 3400611000 ⑩ THREE M ASSOCIATES, LTD.
OR.0004-976 3/16/1998
0.4186 ac p.7-547

- 3400397000 ⑪ THREE M ASSOCIATES, LTD.
OR.0004-976 3/16/1998
0.42 ac p.7-457
- 3400527000 ⑫ THREE M ASSOCIATES, LTD.
OR.0004-976 3/16/1998
0.208 ac p.10-557
- 3400526000 ⑬ THREE M ASSOCIATES, LTD.
OR.0004-976 3/16/1998
0.493 ac p.4-122
- 3400388000 ⑭ MILLER WAYNE E. AND MARY
176-668 5/3/1971
223-716 12/16/1985
0.65 ac p.4-170
- 3400404000 ⑮ Dorothy E. and Mark E. Yoder
Marcia D. and Arlin A. Schlaabach
OR.190-2032 7/25/2006
0.88 ac p.4-170
- 3400405000 ⑯ Dennis and Amanda Mullet
OR.190-2034 7/25/2006
0.555 ac p.11-60

- 3400421000 ⑰ YODER ELI A. AND EDNA
OR.0174-3085 9/3/2004
1.0 ac p.5-109
- 3400420000 ⑱ YODER ELI A. AND EDNA
OR.0174-3085 9/3/2004
1.537 ac p.11-60
- 3400419000 ⑲ YODER ELI A. AND EDNA
OR.0174-3085 9/3/2004
1.654 ac p.12-713
- 3400401000 ⑳ MULLET DENNIS AND AMANDA
252-292 7/24/1991
1.411 ac p.12-713
- 3400402000 ㉑ MULLET DENNIS AND AMANDA
248-324 8/15/1990
1.563 ac p.12-499
- 3400720001 ㉒ MILLER JONAS E. AND RUTH
274-91 6/25/1986
0.052 ac p.16-134

- 3400332001 ㉓ PIONEER TRAILS REALTY, LTD.
OR.0060-667 10/18/2000
0.44 ac p.17-313
- 3400332000 ㉔ MILLER LEROY AND ADA MARIE
254-1006 3/30/1992
1.56 ac p.10-954
- 3400301000 ㉕ Mart E. and Esther N. Miller
231-36 5/2/1986
OR.178-102 2/16/2005
0.01 ac p.19-313

Last Revision: 7/25/2006
T-10, R-6, 4th Qtr., Lot 5
T-14, R-12, Sec. 10
SALT CREEK TWP.
 HOLMES CO., OHIO SCALE: 1" = 200'

LET IT BE KNOWN, THIS MAP HAS BEEN PREPARED AS A REFERENCE GUIDE TO PROPERTY OWNERSHIP. WE BELIEVE THIS INFORMATION TO BE CORRECT AND CURRENT, HOWEVER, IT IS NOT INTENDED FOR ANY LEGAL USE, WHETHER IT BE IN SALES, TRANSFERS, TRADES, LEASES OF ANY TYPE, ETC., AND DO NOT ACCEPT RESPONSIBILITY FOR ERRORS OF ANY NATURE OR OMISSIONS CONTAINED HEREIN.

SC-23