

Hopeview Subdivision Allotment No.1
Plat 2-261 Platted 9/24/1996

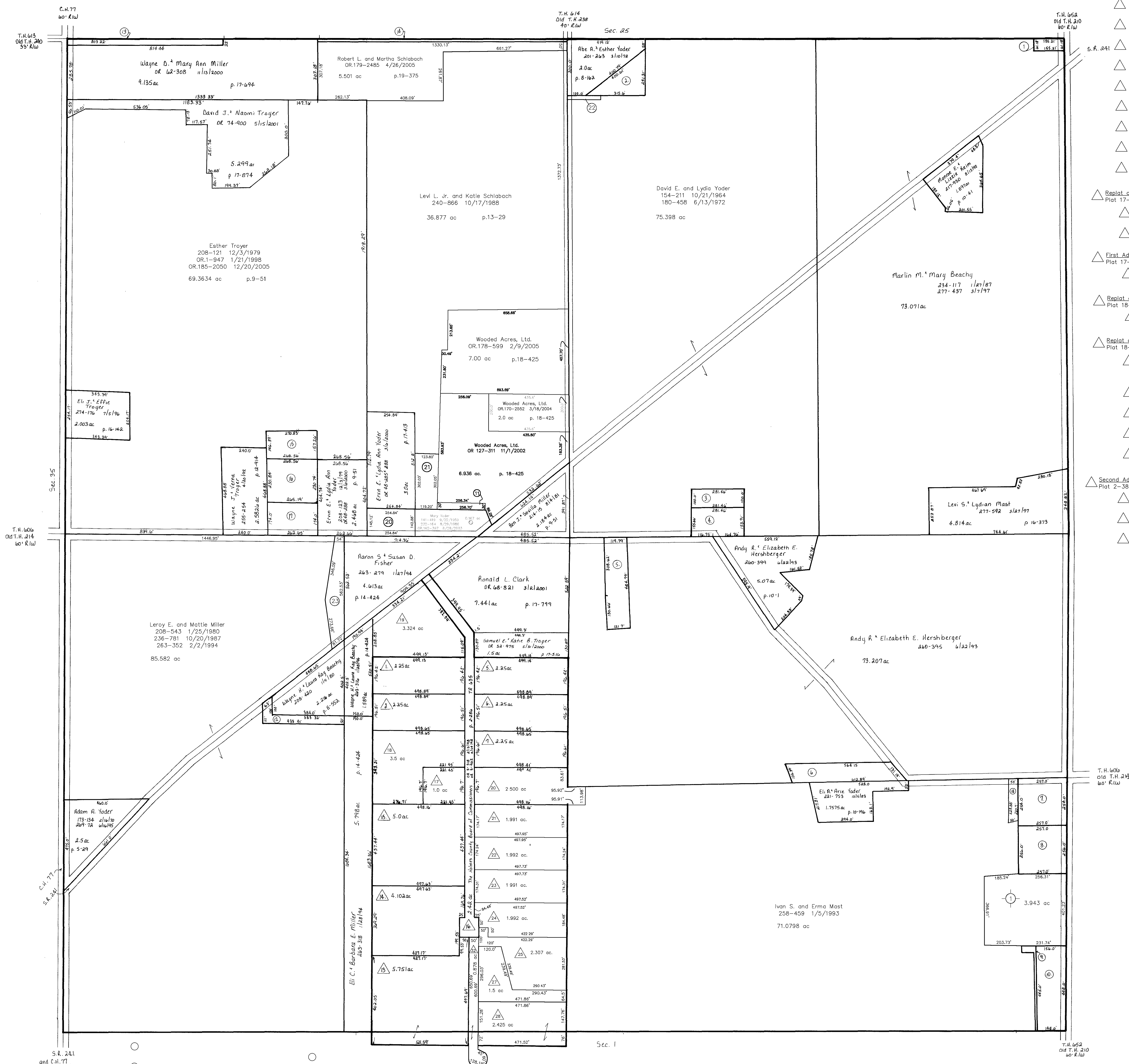
Replat of Lots 3 & 4
Plat 17-283 Platted 10/21/1999

First Addition
Plat 17-690 Platted 11/9/2000

Replat of Lot 8 and Additional Lands
Plat 18-418 Platted 10/23/2002

Replat of Lots 9, 10, 11 & 12
Plat 18-482 Platted 12/23/2002

Second Addition: Replat Lot 26 and Add. Land
Plat 2-384 Platted 8/18/2004



T.H. 609
Old T.H. 210
60' R/W

T.H. 652
Old T.H. 210
60' R/W

LET IT BE KNOWN, THIS MAP HAS BEEN PREPARED AS A REFERENCE GUIDE TO PROPERTY OWNERSHIP. WE BELIEVE THIS INFORMATION TO BE CORRECT AND CURRENT, HOWEVER, IT IS NOT INTENDED FOR ANY LEGAL USE, WHETHER IT BE IN SALES, TRANSFERS, TRADES, LEASES OF ANY TYPE, ETC., AND DO NOT ACCEPT RESPONSIBILITY FOR ERRORS OF ANY NATURE OR OMISSIONS CONTAINED HEREIN.

T-15, R-12, Sec. 36
SALT CREEK TWP.
HOLMES CO., OHIO SCALE 1" = 200'

SC-34

2400623004 22 Abe E. and Esther Yoder
OR.180-928 5/19/2005
0.082 ac p.19-395

3400333001 23 Aaron S. and Susan D. Fisher
OR.183-3098 10/11/2005
1.112 ac p.19-521

T.H. 615
Old T.H. 210
30' R/W

T.H. 616
Old T.H. 214
60' R/W

C.H. 77
S.R. 241

T.H. 606
Old T.H. 214
60' R/W

C.H. 77
S.R. 241

T.H. 616
Old T.H. 214
60' R/W

C.H. 77
S.R. 241

T.H. 615
Old T.H. 210
30' R/W

C.H. 77
S.R. 241

T.H. 615
Old T.H. 210
30' R/W

C.H. 77
S.R. 241