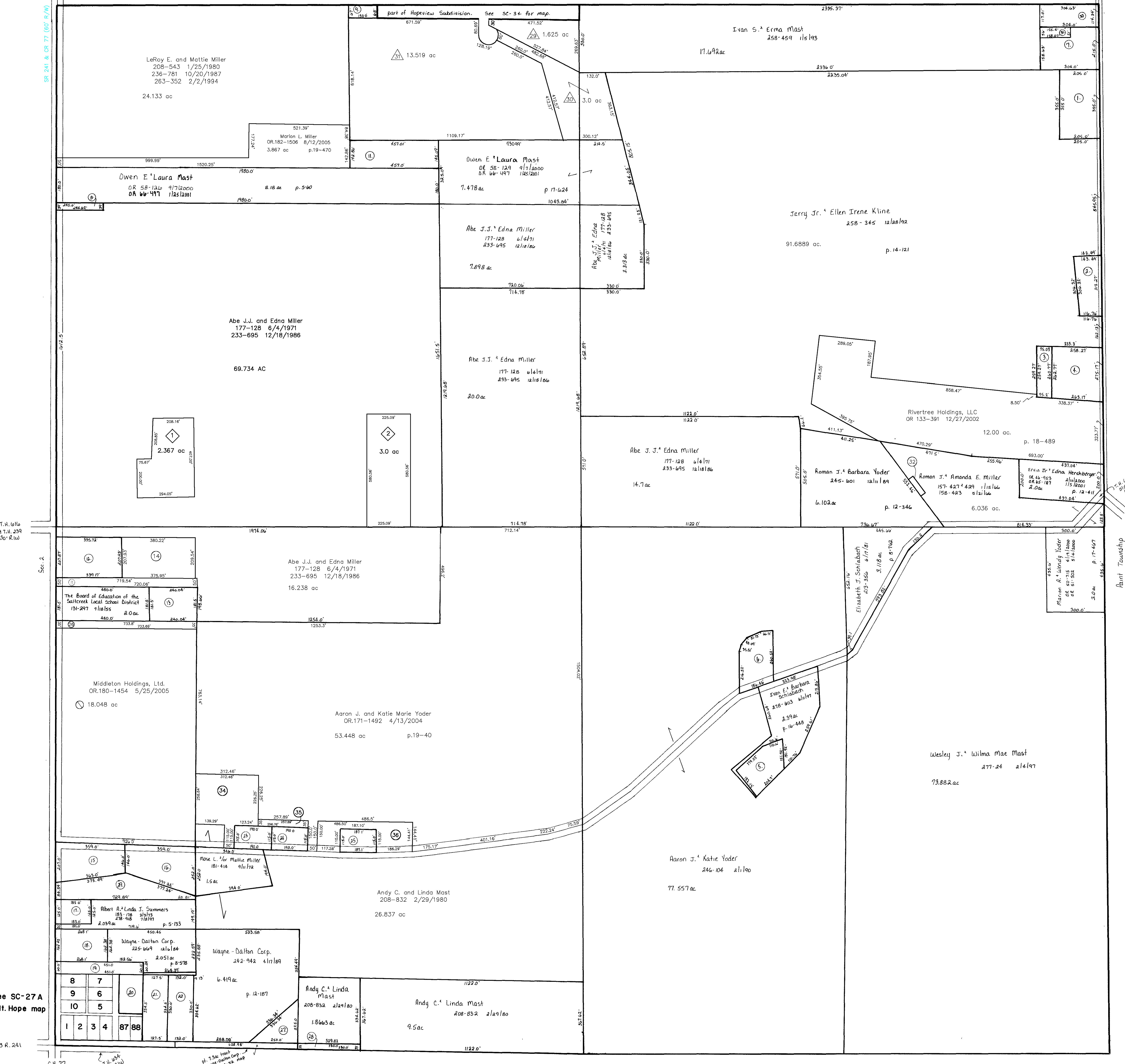


- 1 HERSHBERGER ERVIN A. AND SUSIE ANN  
OR.0021-99 11/25/1998  
1.87 ac p.7-351
- 2 YODER ELI A. AND EFFIE  
258-343 12/28/1992  
0.9233 ac p.14-120
- 3 RIVERTREE HOLDINGS, LLC  
OR.0054-632 6/30/2000  
0.4494 ac p.14-116
- 4 RIVERTREE HOLDINGS, LLC  
OR.0054-632 6/30/2000  
1.6066 ac p.12-810
- 5 SCHLABACH IVAN E. AND BARBARA  
256-473 7/29/1992  
0.9711 ac p.10-320
- 6 MILLER JOSEPH A. AND RHODA  
267-85 12/29/1994  
1.082 ac p.12-366
- 7 MAST EMANUEL JR. AND FANNIE  
187-555 6/14/1974  
1.306 ac
- 8 BOARD OF EDUCATION EAST HOLMES  
LOCAL SCHOOL DISTRICT  
OR.0175-3123 10/25/2004  
0.856 ac p.19-214
- 9 MILLER ELI C. AND BARBARA E.  
263-318 1/28/1994  
0.234 ac p.14-424
- 10 MAST OWEN E. AND LAURA  
OR.0058-126 9/7/2000  
OR.0066-497 1/25/2001  
0.219 ac p.12-384
- 11 MAST OWEN E. AND LAURA  
OR.0058-126 9/7/2000  
OR.0066-497 1/25/2001  
1.511 ac p.12-384
- 12 MILLER LARRY A. AND NETTIE  
266-956 12/14/1994  
1.61 ac p.14-663
- 13 BOARD OF EDUCATION EAST HOLMES  
LOCAL SCHOOL DISTRICT  
245-501 5/29/1989  
1.0 ac p.12-223
- 14 MILLER LARRY A. AND NETTIE  
OR.0175-2811 10/21/2004  
1.812 ac p.19-214
- 15 YODER ABE L. AND BARBARA  
186-665 3/25/1974  
OR.0092-805 11/9/2001  
1.38 ac p.5-30
- 16 MILLER CALVIN R. AND BETTY  
228-449 8/19/1985  
1.64 ac p.5-133
- 17 SUMMERS ALBERT A. AND LINDA J.  
150-141 4/29/1993  
278-918 7/8/1997  
0.53 ac p.3-90 B
- 18 WAYNE DALTON CORP.  
OR.0036-458 8/5/1999  
1.0 ac p.8-578
- 19 YODER PAUL A. AND BETTY  
OR.0059-944 10/6/2000  
0.63 ac p.5-30
- 20 D AND P ENTERPRISES  
198-546 7/1/1977  
0.5 ac
- 21 WAYNE-DALTON CORP.  
225-669 12/6/1984  
1.0 ac
- 22 WAYNE-DALTON CORP.  
225-669 12/6/1984  
1.1 ac S.F.T.
- 23 WEAVER IVAN M. AND ADA  
244-782 9/21/1989  
0.502 ac p.12-298
- 24 WEAVER IVAN M. AND ADA  
165-347 1/12/1968  
0.5 ac p.4-74
- 25 MILLER IVAN M. AND ELLA  
251-183 4/30/1991  
0.494 ac p.12-646
- 26 Board of Education East Holmes Local School District  
OR.183-3096 10/11/2005  
0.602 ac p.19-520
- 27 HOLMES COUNTY BOARD OF COMMISSIONERS  
230-411 2/27/1986  
0.6457 ac p.11-19
- 28 MAST ANDY C. AND LINDA  
208-832 2/29/1980  
0.25 ac
- 29 MT. HOPE INC. LTD.  
OR.0043-342 12/7/1999  
1.561 ac p.16-641
- 30 RABER NOAH A. AND NEVA  
OR.0051-66 4/26/2000  
0.808 ac p.17-471
- 31 RABER NOAH A. AND NEVA  
OR.0051-66 4/26/2000  
0.194 ac p.17-471
- 32 YODER ROMAN J. AND BARBARA A.  
OR.0133-278 12/24/2002  
0.072 ac p.18-487
- 33 MILLER LEON A. AND LAURA  
OR.0142-857 3/24/2003  
1.344 ac p.18-560
- 34 WEAVER MICHAEL AND MARY LOU  
OR.0148-238 5/6/2003  
2.0 ac p.18-607
- 35 WEAVER IVAN M. AND ADA  
OR.0148-238 5/6/2003  
0.207 ac p.18-607
- 36 MILLER IVAN M. AND ELLA  
OR.0148-234 5/6/2003  
1.201 ac p.18-607



T.H. 652  
Old T.H. 210  
33' x 100'

- 3400251001 A & L REAL ESTATE, LTD.  
OR.0170-787 2/25/2004  
2.367 ac
- 3400250001 MILLER LEON A. AND LAURA  
OR.0170-785 2/25/2004  
3.0 ac

- 3400284001 MILLER BEN AND SOVILLA  
OR.0176-399 11/22/2004  
1.625 ac
- 3400282000 MILLER DAVID A. AND MARIE  
OR.0176-397 11/22/2004  
3.0 ac
- 3400284000 MILLER WILLIS D. AND ANNA KATHRYN  
OR.0176-395 11/22/2004  
13.519 ac

Last Revision: 10/11/2005

T-14, R-12, Sec. 1  
SALT CREEK TWP.  
HOLMES CO., OHIO SCALE 1" = 200'

SC-33

LET IT BE KNOWN, THIS MAP HAS BEEN PREPARED AS A REFERENCE GUIDE TO PROPERTY OWNERSHIP. WE BELIEVE THIS INFORMATION TO BE CORRECT AND CURRENT, HOWEVER, IT IS NOT INTENDED FOR ANY LEGAL USE, WHETHER IT BE IN SALES, TRANSFERS, TRADES, LEASES OF ANY TYPE, ETC., AND DO NOT ACCEPT RESPONSIBILITY FOR ERRORS OF ANY NATURE OR OMISSIONS CONTAINED HEREIN.