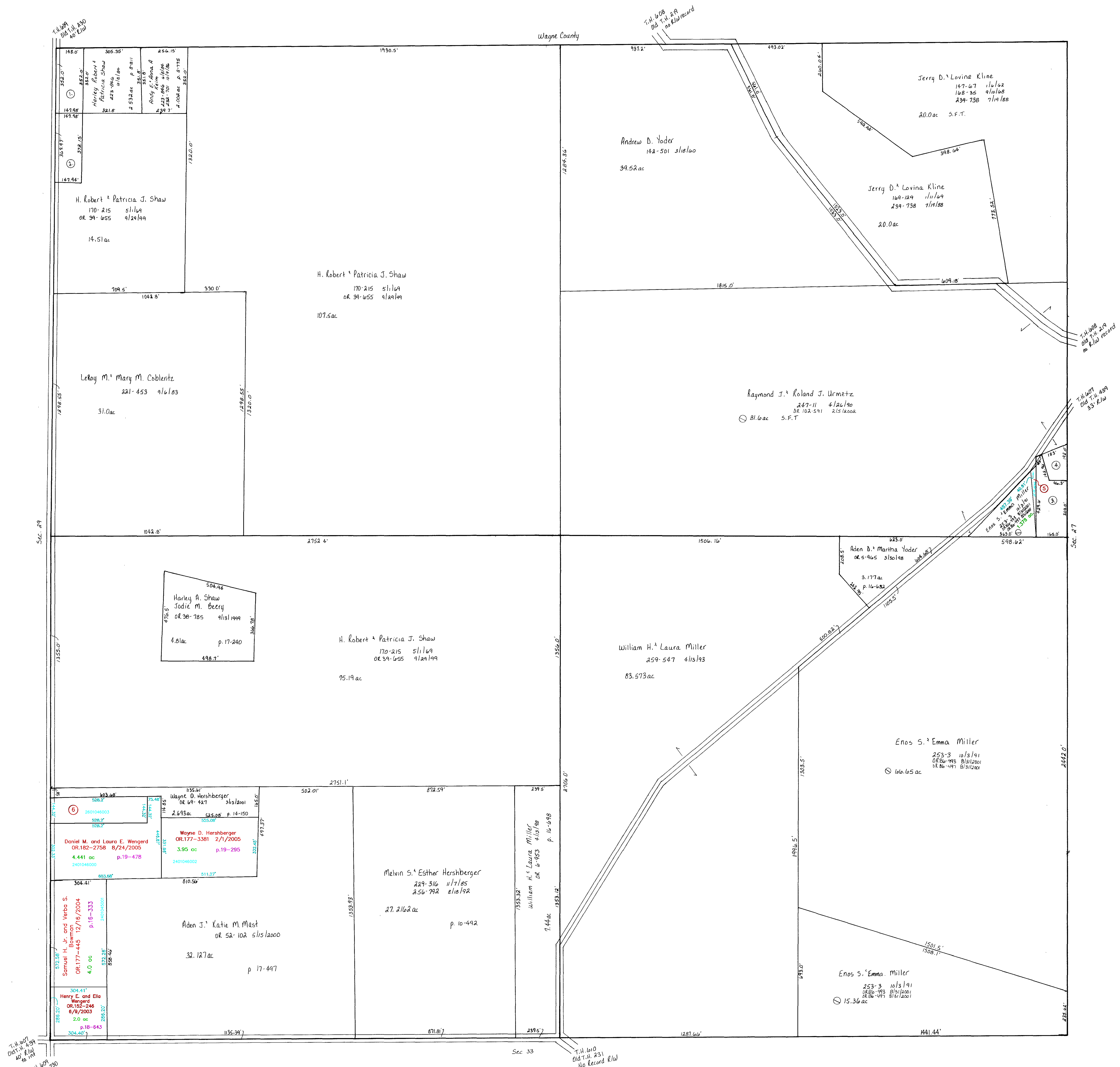


Wayne County



- ① WEAVER, MOSE J. and SCHLABACH, MONROE D.
OR.0064-561 12/21/2000
1.96 ac p.17-735
- ② WEAVER MOSE J. and ESTHER M.
OR.0064-563 12/21/2000
1.26 ac p.17-735
- ③ TROYER MARVIN N. AND MARY M.
215-319 11/12/1981
1.26 ac p.8-824
- ④ MILLER JONAS D.A. AND EDNA M.
259-188 3/16/1993
0.354 ac S.F.T.
- ⑤ TROYER MARVIN N. AND MARY M.
OR.0124-573 10/8/2002
0.122 ac p.18-405
- ⑥ Melvin E. and Verma M. Wengert
OR.182-2756 8/24/2005
1.75 ac p.19-478

Last Revision: 8/24/2005
 T-15, R-12, Sec. 28
 SALT CREEK TWP.
 HOLMES CO., OHIO SCALE: 1" = 200'

SC-22

LET IT BE KNOWN THIS MAP HAS BEEN PREPARED AS A REFERENCE GUIDE TO PROPERTY OWNERSHIP. WE BELIEVE THIS INFORMATION TO BE CORRECT AND CURRENT. HOWEVER, IT IS NOT INTENDED FOR ANY LEGAL USE, WHETHER IT BE IN SALES, TRANSFERS, TRADES, LEASES OF ANY TYPE, ETC., AND DO NOT ACCEPT RESPONSIBILITY FOR ERRORS OF ANY NATURE OR OMISSIONS CONTAINED HEREIN.