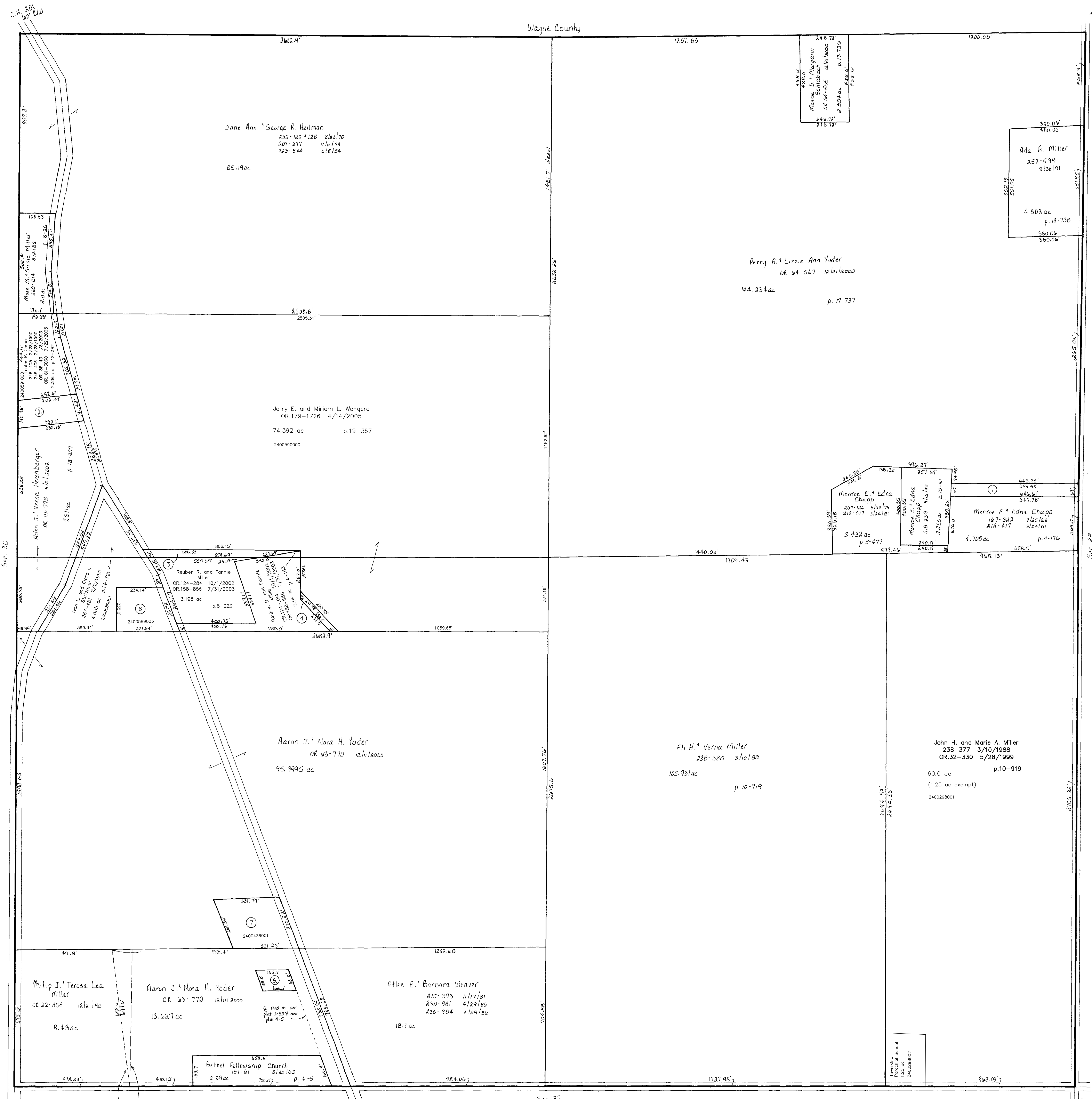


Wayne County



- ① CHUPP MONROE E. AND EDNA  
257-224 9/23/1992  
1.0 ac p.14-44
- ② SCHLABACH DAN J.C. AND MATTIE  
OR.0055-23 7/10/2000  
1.0 ac p.17-552
- ③ MILLER REUBEN R. AND FANNIE  
OR.0124-284 10/1/2002  
OR.0158-856 7/31/2003  
0.551 ac p.8-229
- ④ MILLER REUBEN R. AND FANNIE  
OR.0124-284 10/1/2002  
OR.0158-856 7/31/2003  
0.18 ac p.8-228
- ⑤ SMITH LARRY E. AND CAROLYN J.  
155-179 3/16/1985  
OR.0067-579 2/13/2001  
0.383 ac p.3-588
- ⑥ Steve I. Stutzman  
OR.179-3250 5/5/2005  
1.5 ac p.19-384
- ⑦ Ade J. Yoder  
OR.180-2500 6/8/2005  
1.9005 ac p.12-816

Last Revision: 7/22/2005

T-15, R-12, Sec. 29  
SALT CREEK TWP.  
HOLMES CO., OHIO SCALE: 1" = 200'

SC-18

LET IT BE KNOWN, THIS MAP HAS BEEN PREPARED AS A REFERENCE GUIDE TO PROPERTY OWNERSHIP. WE BELIEVE THIS INFORMATION TO BE CORRECT AND CURRENT, HOWEVER, IT IS NOT INTENDED FOR ANY LEGAL USE, WHETHER IT BE IN SALES, TRANSFERS, TRADES, LEASES OF ANY TYPE, ETC., AND DO NOT ACCEPT RESPONSIBILITY FOR ERRORS OF ANY NATURE OR OMISSIONS CONTAINED HEREIN.