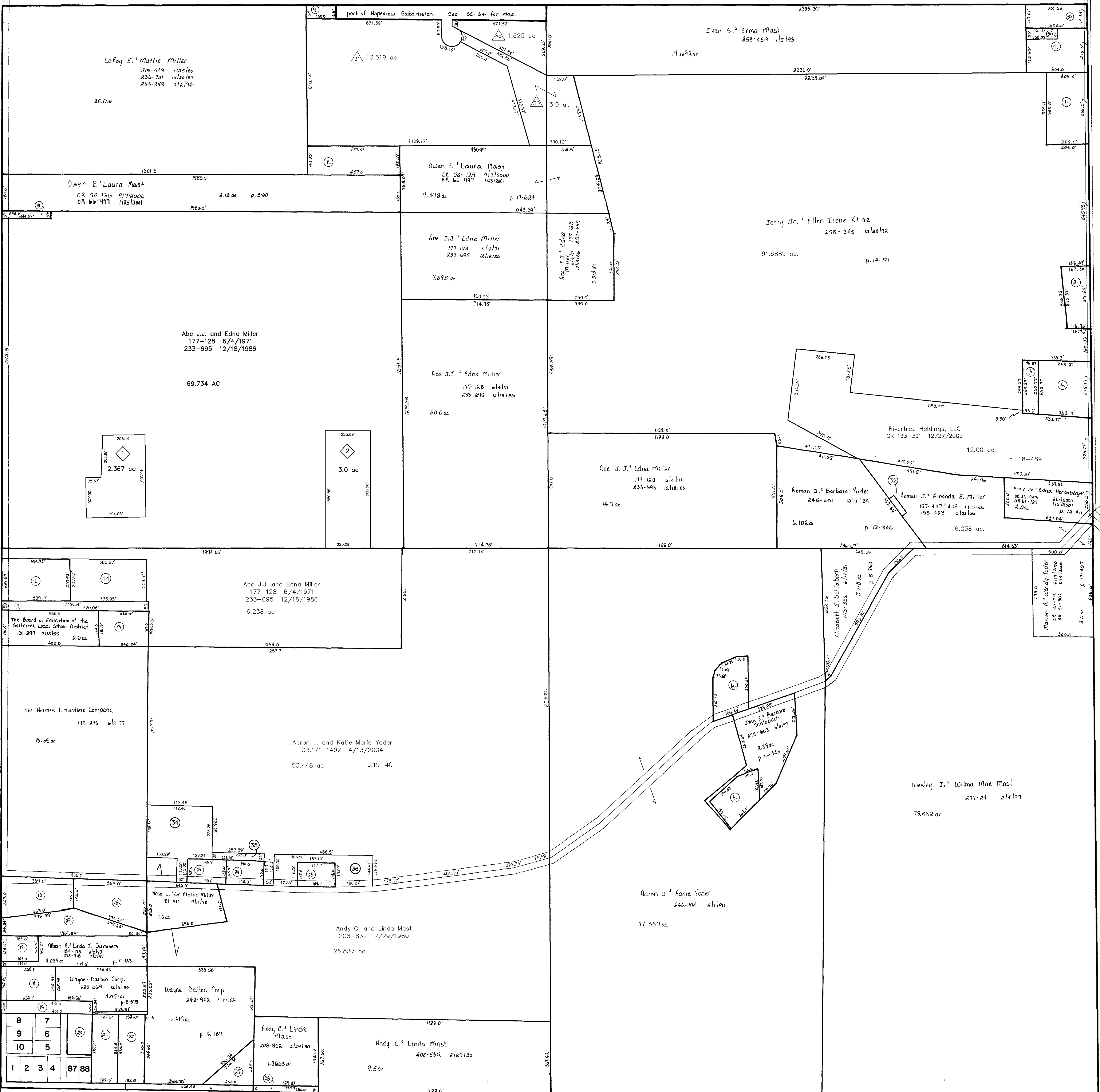


S.R. 241  
and C.H. 77  
60° E. 1/4

T.H. 652  
Old T.H. 210  
33° E. 1/4

Sec. 36

Sec. 12



T.H. 616  
Old T.H. 209  
30° E. 1/4

T.H. 652  
Old T.H. 210  
33° E. 1/4

Rant Township

See SC-27A  
for Mt. Hope map

S.R. 241

C.H. 77  
60° E. 1/4

p. 75c  
Wayne-Dalton Corp.  
see SC-30 map

◇ A & L Subdivision SC-33A  
Plat 2-372 Platted 10/3/2003

△ Hopeview Subdivision Allotment No. 1 Second Addition SC-33A  
Plat 2-372 Platted 10/3/2003

Updated: 11/2/2004

T-14, R-12, Sec. 1  
SALT CREEK TWP.  
HOLMES CO., OHIO SCALE 1" = 200'

LET IT BE KNOWN, THIS MAP HAS BEEN PREPARED AS A REFERENCE GUIDE TO PROPERTY OWNERSHIP. WE BELIEVE THIS INFORMATION TO BE CORRECT AND CURRENT, HOWEVER, IT IS NOT INTENDED FOR ANY LEGAL USE, WHETHER IT BE IN SALES, TRANSFERS, TRAILS, LEASES OF ANY TYPE, ETC., AND DO NOT ACCEPT RESPONSIBILITY FOR ERRORS OF ANY NATURE OR OMISSIONS CONTAINED HEREIN.

SC-33

