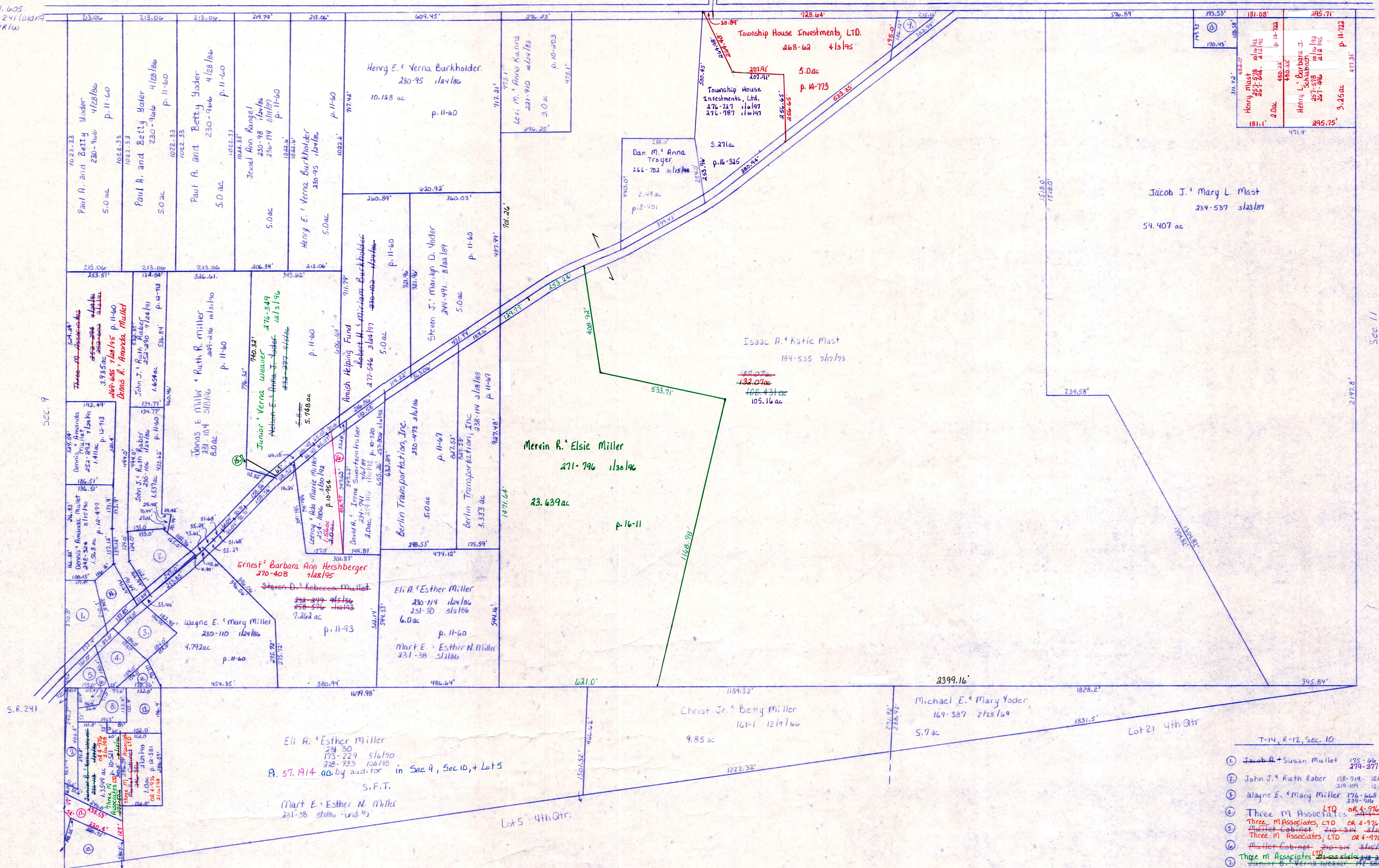


T.H. 605
T.H. 241 (100)
60' R/W

C.H. 235
30' R/W

Sec. 3

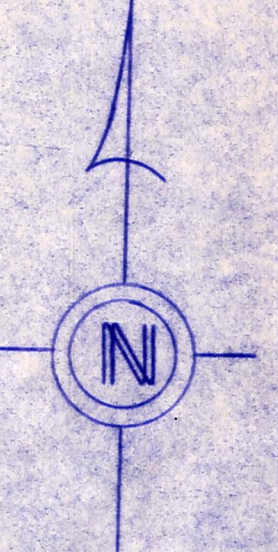
S.R. 241



- T-14, R-12, Sec. 10
- ① Jacob A. & Susan Mullet 175-06 913/70 .98 ac p. 5-53
 - ② John J. & Ruth Baber 108-92 214/71 1.0 ac p. 5-109
 - ③ Wayne E. & Mary Miller 270-62 514/71 .65 ac p. 4-170
 - ④ Three M Associates, LTD 208-4-976 211/109 .993 ac p. 4-122
 - ⑤ Three M Associates, LTD OR 4-976 316/190
 - ⑥ Three M Associates, LTD OR 4-976 316/190
 - ⑦ Three M Associates, LTD OR 4-976 316/190
 - ⑧ Three M Associates, LTD OR 4-976 316/190
 - ⑨ Three M Associates, LTD OR 4-976 316/190
 - ⑩ Three M Associates, LTD OR 4-976 316/190
 - ⑪ Trustees of Salt Creek Twp. 25-55156 121/100 .46 ac
 - ⑫ Henry I. & Anna Kline 230-114 121/100 .45 ac p. 10-520
 - ⑬ Three M Associates, LTD OR 4-976 316/190
 - ⑭ Three M Associates, LTD OR 4-976 316/190
 - ⑮ Three M Associates, LTD OR 4-976 316/190
 - ⑯ John F. & The Mast 114-111 221-229 121/100 .53 ac p. 10-708
 - ⑰ Henry J. & Fannie J. Mast 127-6 215/100
 - ⑱ Jacob A. & Susie Mullet 230-108 114/100 .555 ac p. 11-60
 - ⑲ Jonas E. & Ruth Miller 274-97 121/100 .052 ac p. 16-134
 - ⑳ David A. & Irene Swartzentruber OR 43-424 1123/99 .44 ac p. 17-313
 - ㉑ Three M Associates OR 43-423 121/100 .681 ac p. 17-325

T-14, R-12, Sec. 10
SALT CREEK TWP.

SCALE 1"=200'



LET IT BE KNOWN, THIS MAP HAS BEEN PREPARED AS A REFERENCE GUIDE TO PROPERTY OWNERSHIP. WE BELIEVE THIS INFORMATION TO BE CORRECT AND CURRENT, HOWEVER, IT IS NOT INTENDED FOR ANY LEGAL USE, WHETHER IT BE IN SALES, TRANSFERS, TRADES, LEASES OF ANY TYPE, ETC., AND DO NOT ACCEPT RESPONSIBILITY FOR ERRORS OF ANY NATURE OR OMISSIONS CONTAINED HEREIN.

S-23