

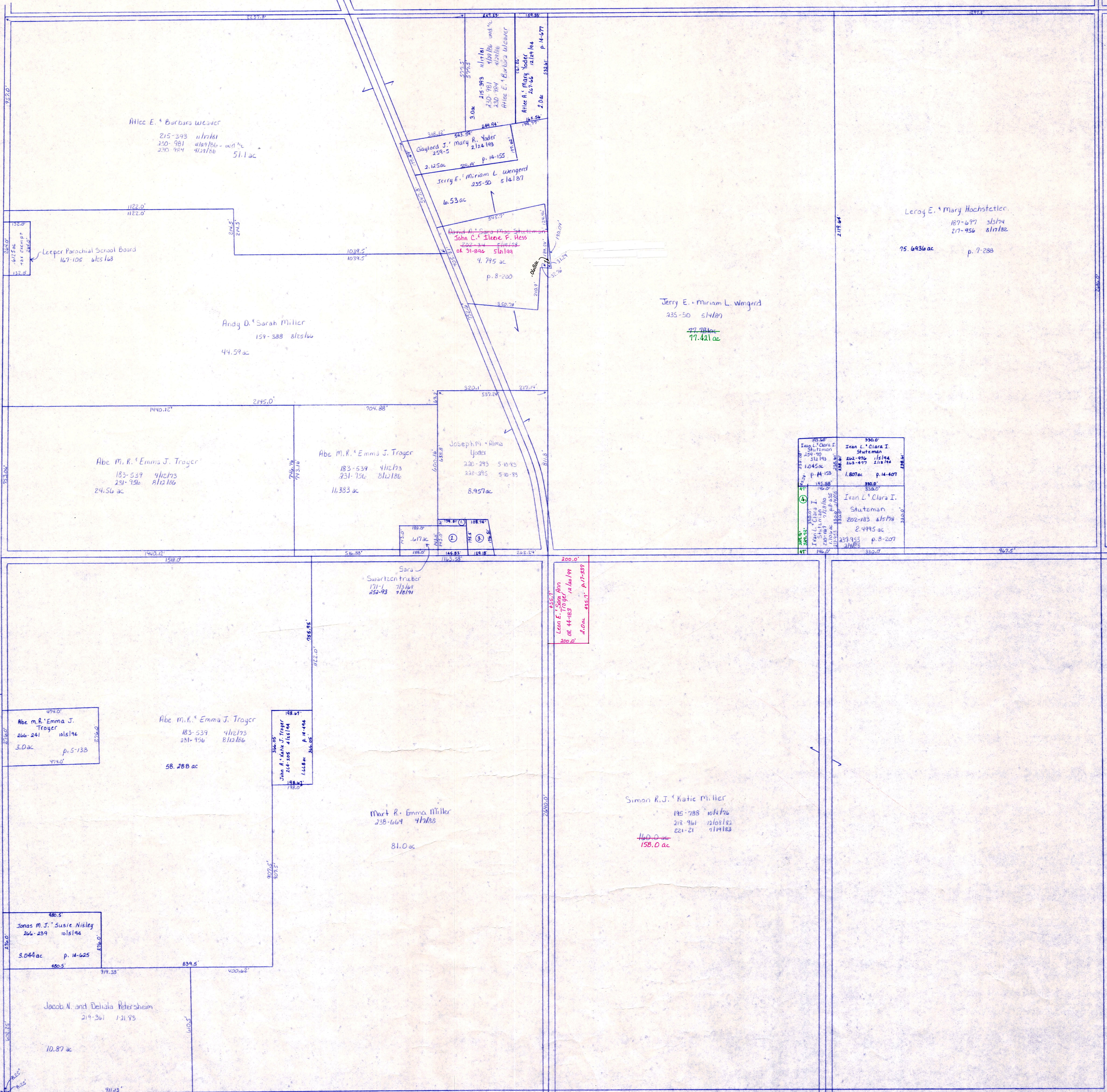
T.H. 601  
T.H. 187 (Old n<sup>s</sup>)  
60' R/W

C.H. 201  
60' R/W

Sec. 29

T.H. 609  
T.H. 230 (Old n<sup>s</sup>)  
40' R/W

T.H. 607  
T.H. 439 (Old n<sup>s</sup>)  
40' R/W



Sec. 31

T.H. 569  
T.H. 243 (Old n<sup>s</sup>)  
60' R/W

Abe M. & Emma J. Troyer  
266-241 10/1/94  
3.0 ac p. 5-133

Abe M. & Emma J. Troyer  
183-539 4/12/93  
231-956 8/12/86  
58.288 ac

John A. & Emma J. Troyer  
264-206 4/12/94  
1/2 ac p. 14-144

Mart R. & Emma Miller  
238-664 4/12/88  
81.0 ac

Simon R. & Katie Miller  
195-788 10/4/96  
218-961 12/29/82  
221-21 9/19/83  
158.0 ac

Jonas M. J. & Susie Nixley  
266-239 10/1/94  
3.044 ac p. 14-625

Jacob N. and Delia Petersheim  
219-261 1/21/93  
10.87 ac

T.H. 601  
T.H. 187 (Old n<sup>s</sup>)  
60' R/W

- ① Wyman J. & Amanda Coblenz 246-738 4/1/96 10/9/96 ac p. 12-401
- ② Wyman J. & Amanda Coblenz 176-782 5/1/91 467 ac p. 5-81
- ③ Ella A. Troyer 266-255 1/2/94 479 ac p. 14-642
- ④ Ivan L. & Clara I. Stuteman 274-90 6/25/96 .36 ac p. 16-133

T.H. 604  
T.H. 188 (Old n<sup>s</sup>)  
60' R/W

Sec. 5

C.H. 201  
60' R/W

T-15, R-12, Sec. 32  
SALT CREEK TWP.

SCALE 1"=200'

LET IT BE KNOWN, THIS MAP HAS BEEN PREPARED AS A REFERENCE GUIDE TO PROPERTY OWNERSHIP. WE BELIEVE THIS INFORMATION TO BE CORRECT AND CURRENT, HOWEVER, IT IS NOT INTENDED FOR ANY LEGAL USE, WHETHER IT BE IN SALES, TRANSFERS, TRADES, LEASES OF ANY TYPE, ETC., AND DO NOT ACCEPT RESPONSIBILITY FOR ERRORS OF ANY NATURE OR OMISSIONS CONTAINED HEREIN.

S-17