

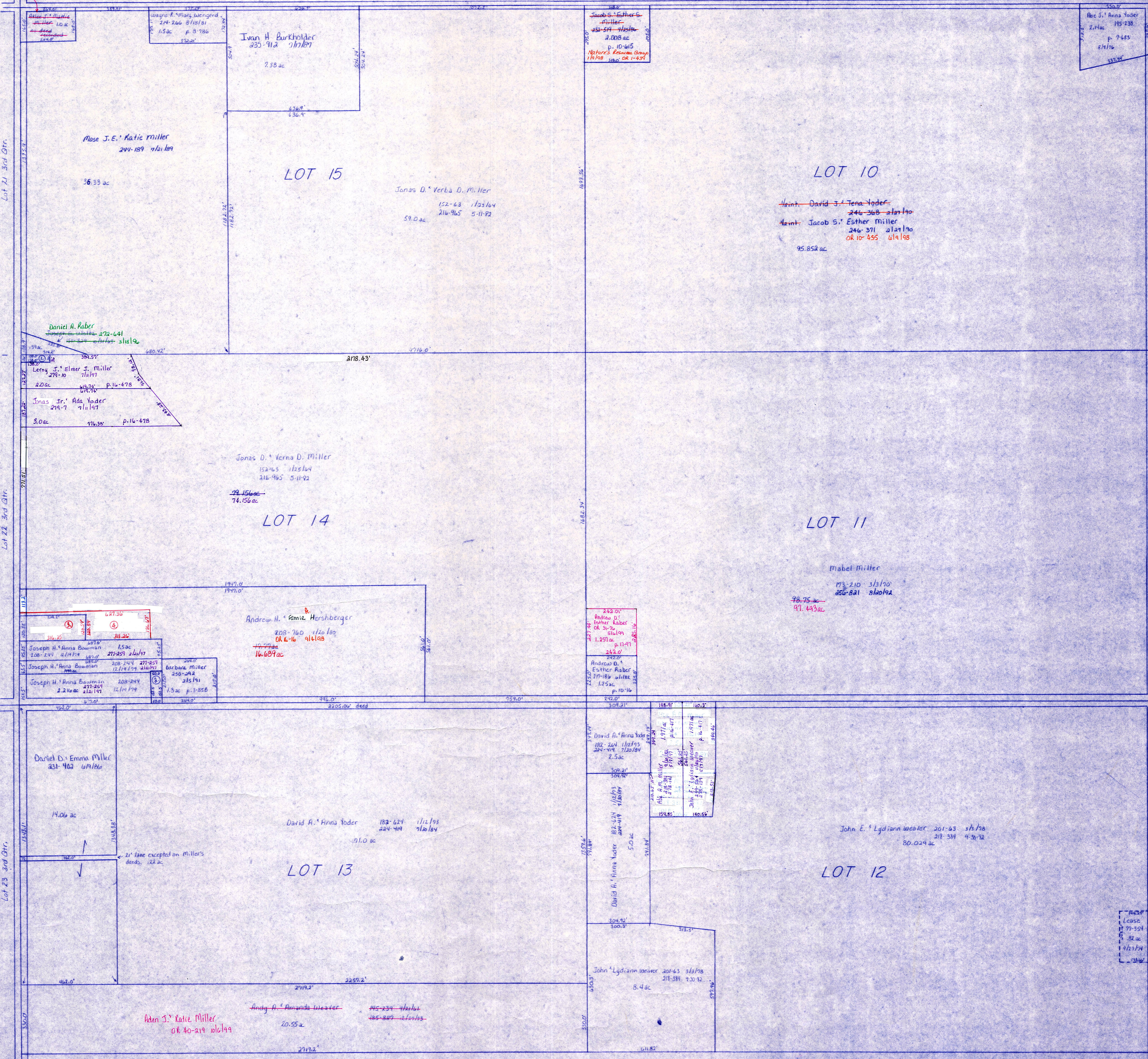
C.H. 77  
60' R/W

T.H. 452  
T.H. 210  
30' R/W

T.H. 628  
T.H. 212 (old no.)  
40' R/W

T.H. 428, T.H. 212, 40' R/W

*Handwritten:* Ivan L. Schlaabach  
OR 36-148 7/30/89



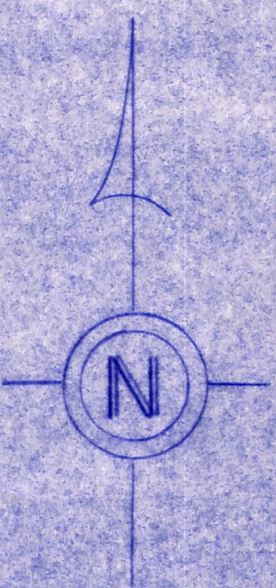
Lot 21 3rd Qtr.

Lot 22 3rd Qtr.

Lot 23 3rd Qtr.

Point Twp

Point Corners  
School



C.H. 77  
60' R/W

T.H. 452  
T.H. 210  
30' R/W

- ① Daniel A. Raber 272-641 3/18/96
- ② Joseph E. Weller 272-641 3/18/96
- ③ Loren D. Yoder 263-704 3/11/94 .175 ac p. 14-456
- ④ Martha Hershberger 187-797 3/10/76, 213-728 7/26/81, 235-658 4/25/87, 249-550 1/26/89 2.91 ac p. 14-873
- ⑤ Martha Hershberger 264-558 7/25/95 1.061 ac p. 14-875

Berlin Twp.

T-10, R-5, 3rd. Qtr. Lots 10, 11, 12, 13, 15  
SALT CREEK TWP.

Scale 1"=200'

LET IT BE KNOWN, THIS MAP HAS BEEN PREPARED AS A REFERENCE GUIDE TO PROPERTY OWNERSHIP. WE BELIEVE THIS INFORMATION TO BE CORRECT AND CURRENT. HOWEVER, IT IS NOT INTENDED FOR ANY LEGAL USE, WHETHER IT BE IN SALES, TRANSFERS, TRADES, LEASES OF ANY TYPE, ETC., AND DO NOT ACCEPT RESPONSIBILITY FOR ERRORS OF ANY NATURE OR OMISSIONS CONTAINED HEREIN.

