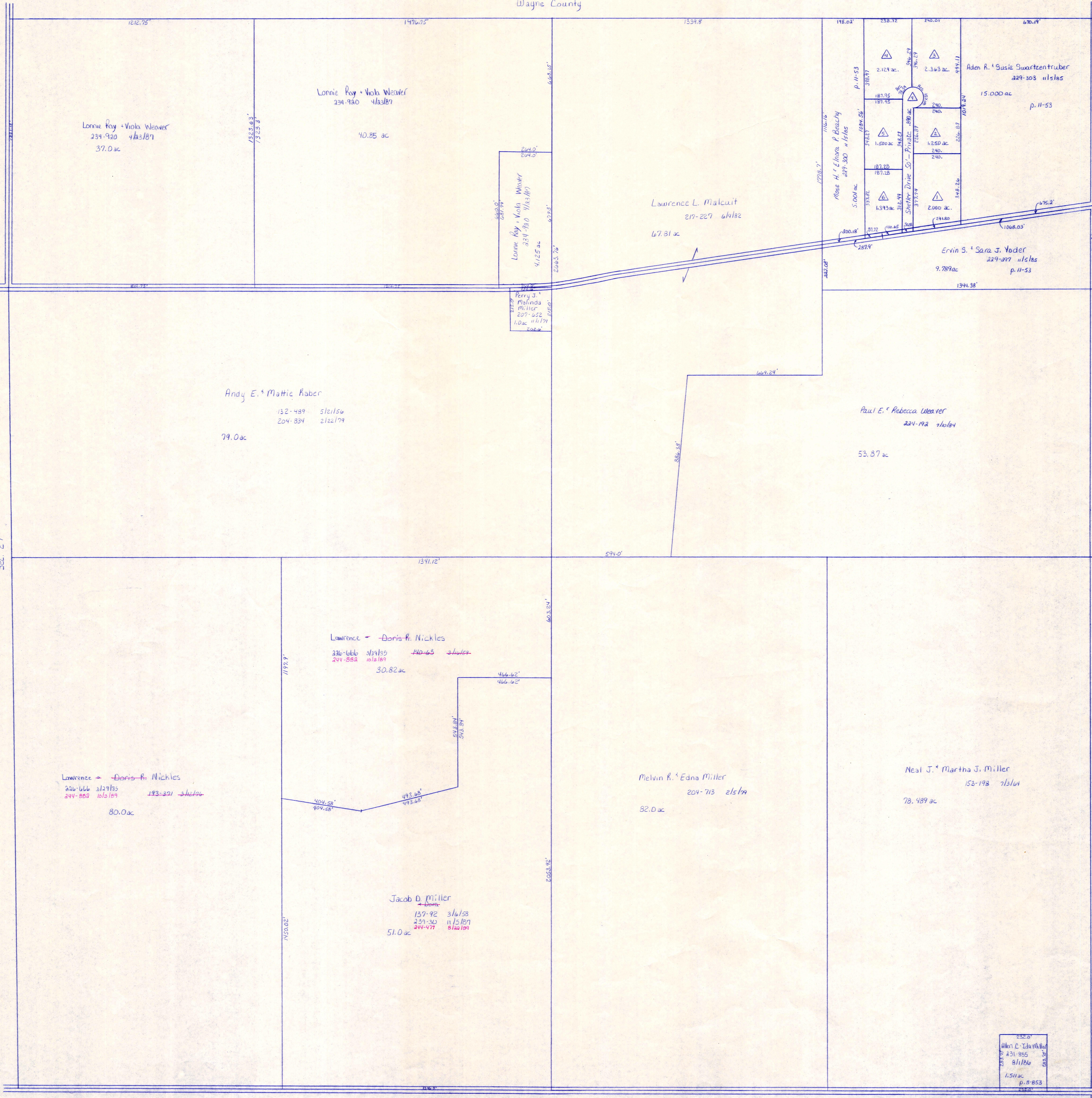


T.H. 612  
T.H. 233 (Older)  
33' R/W

C.H. 77  
60' R/W

Wayne County



C.H. 229  
33' R/W

C.H. 229  
33' R/W

Sec. 27

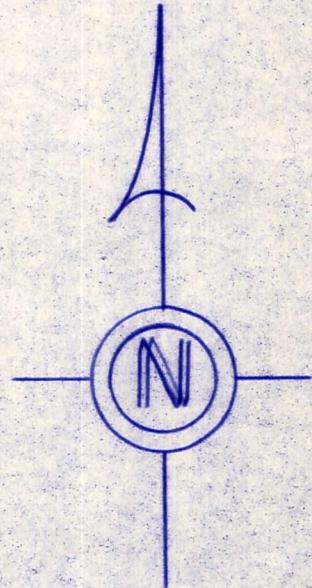
Sec. 25

Sec. 35

C.H. 77  
60' R/W

T.H. 613  
T.H. 240 (Older)  
33' R/W

432.0  
Alice C. Edna Miller  
431-885  
8/11/86  
1.51 ac  
p. 8-852  
1852



LET IT BE KNOWN, THIS MAP HAS BEEN PREPARED AS A REFERENCE GUIDE TO PROPERTY OWNERSHIP. WE BELIEVE THIS INFORMATION TO BE CORRECT AND CURRENT, HOWEVER, IT IS NOT INTENDED FOR ANY LEGAL USE, WHETHER IT BE IN SALES, TRANSFERS, TRADES, LEASES OF ANY TYPE, ETC., AND DO NOT ACCEPT RESPONSIBILITY FOR ERRORS OF ANY NATURE OR OMISSIONS CONTAINED HEREIN.

T-15, R-12, Sec. 26  
SALT CREEK TWP.  
SCALE 1" = 200'

S-300