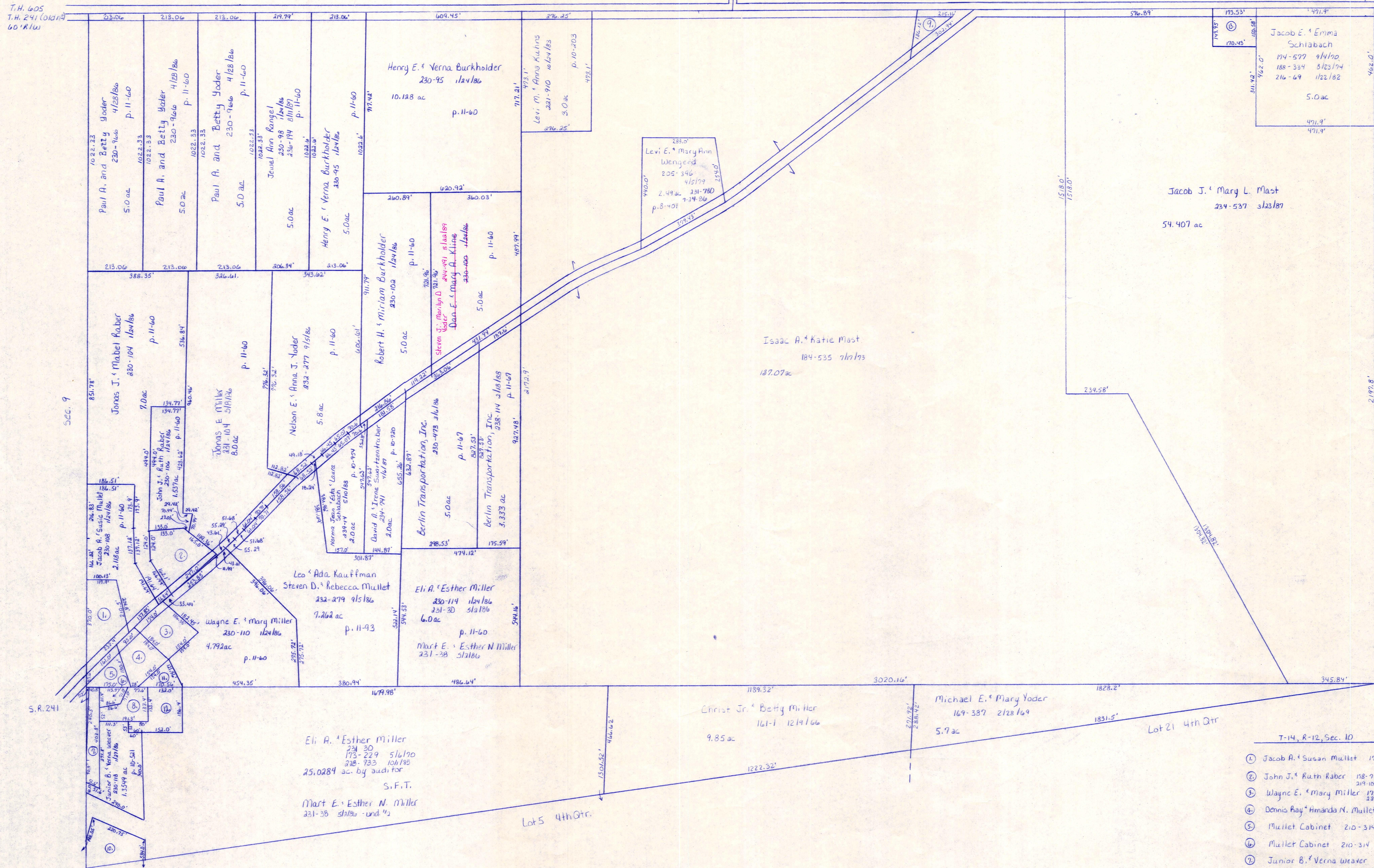


T.H. 405
T.H. 241 (10/13)
60' R/W

CH. 235
50' R/W

Sec. 3

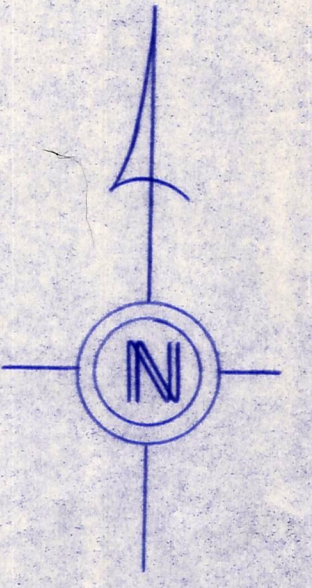
S.R. 241



- T-14, R-12, Sec. 10
- ① Jacob A. & Susan Mullet 195-06 4/28/70 .98 ac p. 5-53
 - ② John J. & Ruth Raber 158-714 12/16/71 10 ac p. 5-104
 - ③ Wayne E. & Mary Miller 174-668 5/15/71 .65 ac p. 4-170
 - ④ Dennis Ray & Amanda N. Mullet 231-217 8/11/83 .493 ac p. 4-122
 - ⑤ Mullet Cabinet 210-314 8/15/80 .42 ac
 - ⑥ Mullet Cabinet 210-314 8/15/80 .164 ac
 - ⑦ Junior B. & Verna Weaker 182-585 2/11/75 .418 ac p. 7-517
 - ⑧ Mullet Cabinet 231-1 5/11/80 .4215 ac p. 10-11
 - ⑨ Trustees of Salt Creek Twp. 75-55156 12/11/00 .44 ac
 - ⑩ Henry J. & Anna Kline 230-116 1/21/80 .95 ac p. 10-520
 - ⑪ Dennis Ray & Amanda N. Mullet 231-6 5/11/80 .208 ac p. 10-557
 - ⑫ Mullet Cabinet 231-4 5/11/80 .6633 ac p. 10-521
 - ⑬ John E. & Ida Mast 140-456 11/15/71 234-541 2/21/87 .593 ac p. 10-708

T-14, R-12, Sec. 10
SALT CREEK TWP.

SCALE 1"=200'



LET IT BE KNOWN, THIS MAP HAS BEEN PREPARED AS A REFERENCE GUIDE TO PROPERTY OWNERSHIP. WE BELIEVE THIS INFORMATION TO BE CORRECT AND CURRENT, HOWEVER, IT IS NOT INTENDED FOR ANY LEGAL USE, WHETHER IT BE IN SALES, TRANSFERS, TRADES, LEASES OF ANY TYPE, ETC., AND DO NOT ACCEPT RESPONSIBILITY FOR ERRORS OF ANY NATURE OR OMISSIONS CONTAINED HEREIN.

S-23