

C.H. 77
60' R/W

T.H. 614
T.H. 238 (Old) 40' R/W

T.H. 612
T.H. 215 (Old) 60' R/W

Wayne County

C.H. 229
55' R/W

C.H. 229
35' R/W

Paint Trap

Sec. 26

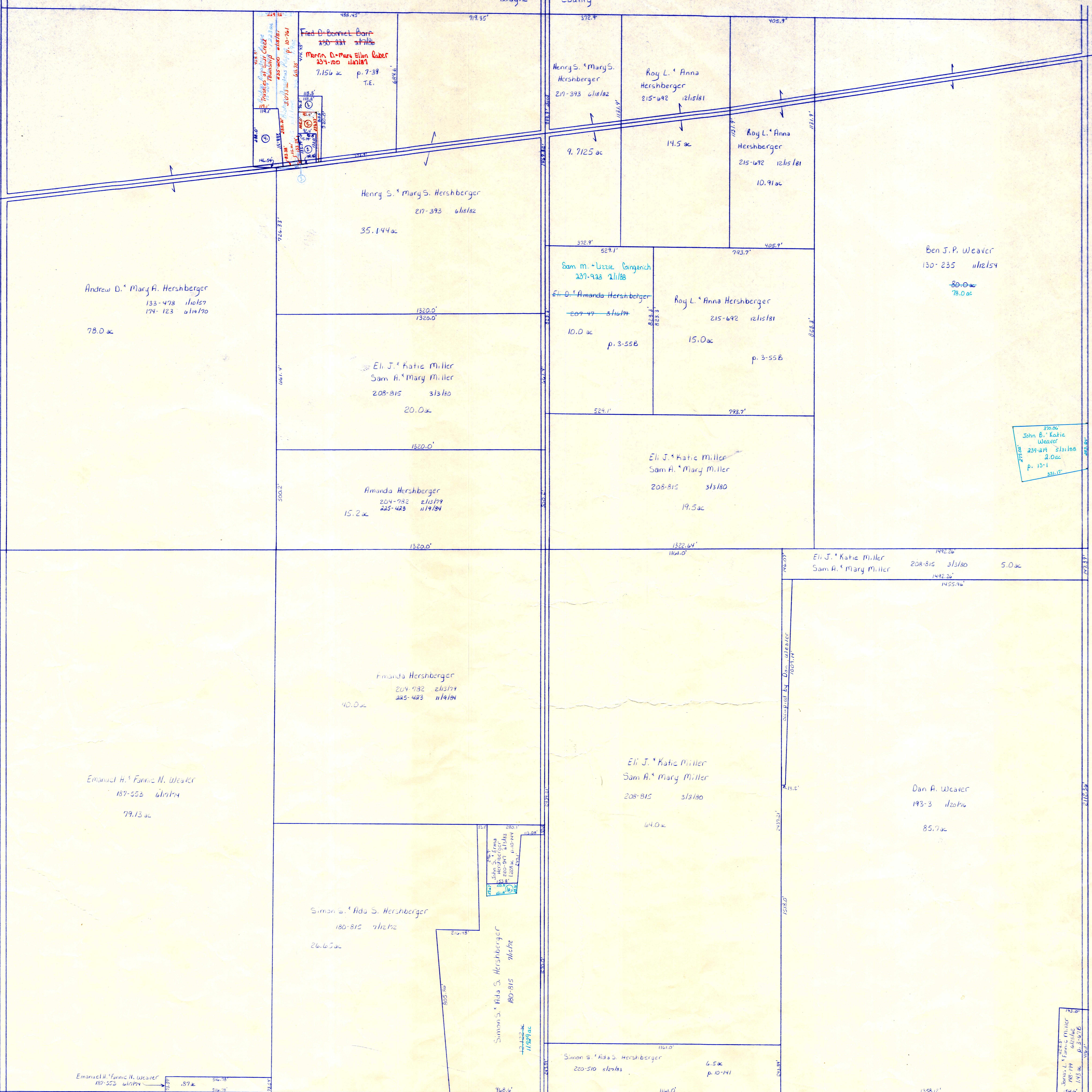
Sec. 35

T.H. 613
T.H. 240 (Old) 35' R/W

T.H. 614
T.H. 238 (Old) 40' R/W

T.H. 612
T.H. 215 (Old) 60' R/W

C.H. 77
60' R/W



- ① Maria D. & Mary Ellen Huber 231-100 .311 ac 1/27/87
- ② Fred B. & Bonnie E. Barr 230-220 2.00 ac 1/15/87
- ③ Kinsinger Memorial Association 232-472 10.5/87
- ④ S.H. Rosecrans - Bishop of Columbus 30-509 1/16/87
- ⑤ Mark A. & Mary M. Royce 230-544 3.14/87
- ⑥ Fred B. & Bonnie E. Barr 230-220 2.00 ac 1/15/87
- ⑦ Calverley Memorial Association 231-444 10.5/87
- ⑧ John S. & Emma Hershberger 239-970 2.1/88 .193 ac p. 12-41

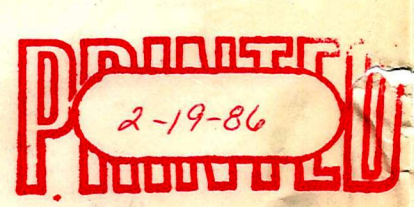
John B. & Katie Weaver
239-218 2.0 ac
p. 13-1

Simon S. & Ada S. Hershberger
180-815 11/21/82
1.93 ac p. 2-20/86

T-15, R-12, Sec. 25
SALT CREEK TWP.

LET IT BE KNOWN, THIS MAP HAS BEEN PREPARED AS A REFERENCE GUIDE TO PROPERTY OWNERSHIP. WE BELIEVE THIS INFORMATION TO BE CORRECT AND CURRENT. HOWEVER, IT IS NOT INTENDED FOR ANY LEGAL USE, WHETHER IT BE IN SALES, TRANSFERS, TRADES, LEASES OF ANY TYPE, ETC. AND DO NOT ACCEPT RESPONSIBILITY FOR ERRORS OF ANY NATURE OR OMISSIONS CONTAINED HEREIN.

SCALE 1"=200'



S-35