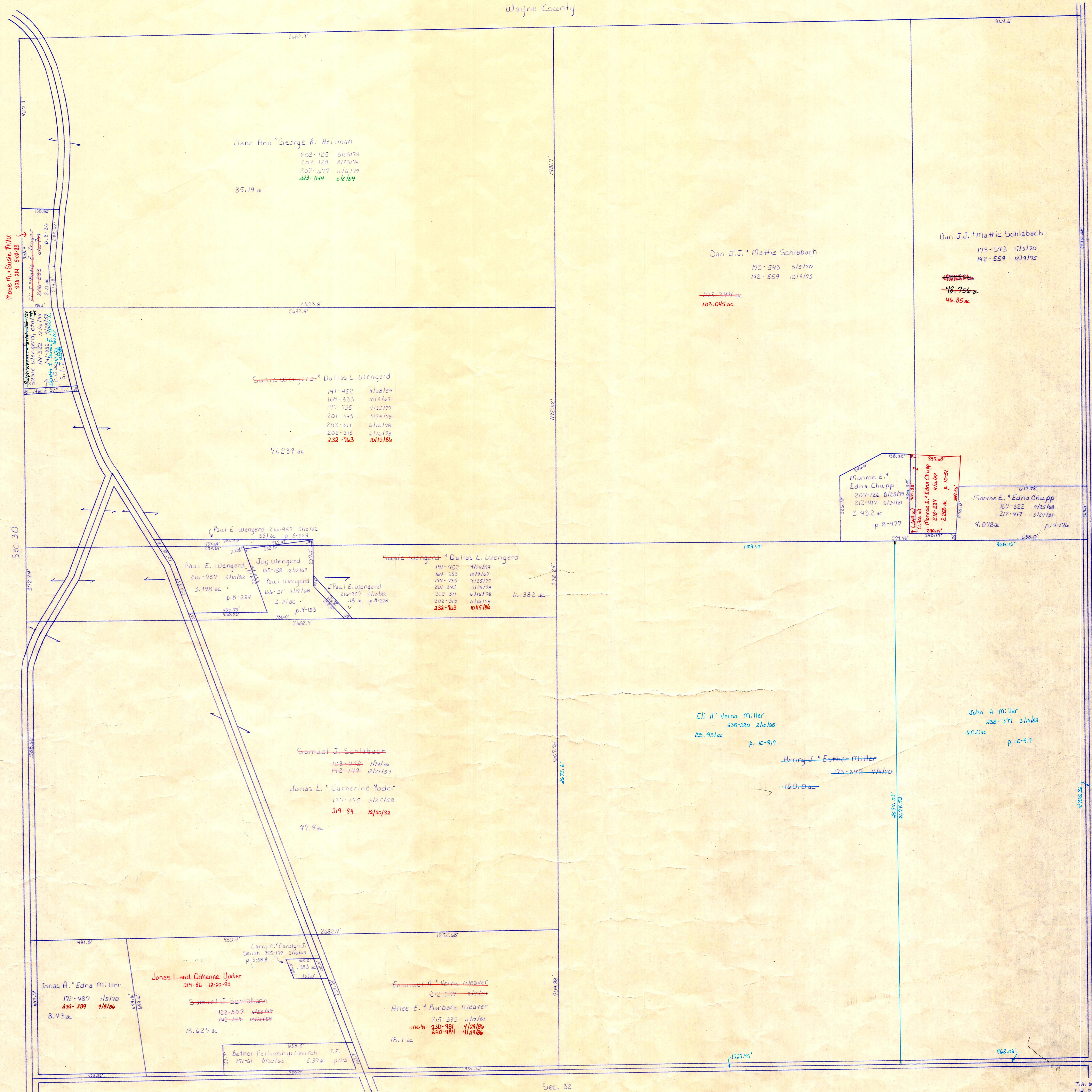


T.H. 609  
T.H. 230 (old n<sup>o</sup>)  
40' R/W

Wayne County

C.H. 201  
60' R/W



Moses M. & Susie Miller  
238-241 5/9/85

SEC. 30

T.H. 601  
T.H. 187 (old n<sup>o</sup>)  
60' R/W

C.H. 201  
60' R/W

SEC. 32

SEC. 28

T.H. 609  
T.H. 230 (old n<sup>o</sup>)  
40' R/W

T-15, R-12, Sec. 29  
SALT CREEK TWP.

SCALE 1"=200'

S-18

