

T.H. 601  
T.H. 187 (Old 1st)  
60' R/W

C.H. 201  
60' R/W

Sec 29

T.H. 609  
T.H. 235 (Old 1st)  
40' R/W

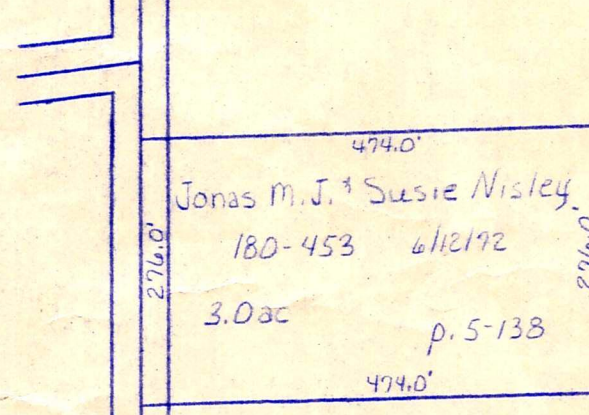
T.H. 607  
T.H. 439 (Old 1st)  
40' R/W



Sec 31

Sec 33

T.H. 569  
T.H. 243 (Old 1st)  
60' R/W

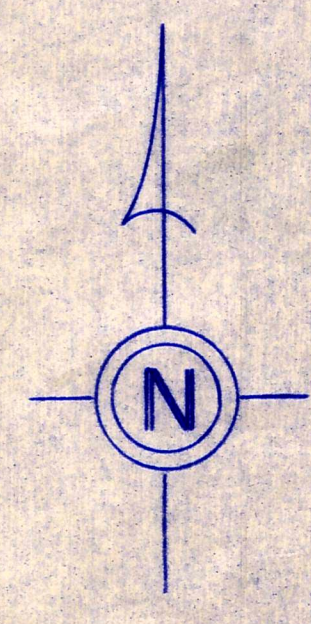


T.H. 601  
T.H. 187 (Old 1st)  
60' R/W

T.H. 604  
T.H. 185 (Old 1st)  
60' R/W

C.H. 201  
60' R/W

Sec 5



T-15, R-12, Sec. 32  
SALT CREEK TWP.

SCALE 1"=200'

S-17